

Missouri Precision Tools Inc
St Louis Missouri 63129

Missouri Precision Tools Inc.
St Louis Mo 63129
www.mo2ls.com
1-866-94-TOOLS
1-866-948-6657
Sales@mo2ls.com

2008

TENRYU

Making Quality Saw Blades Since 1910

1-866-948-6657

314-487-2686

Fax - 314-487-2868

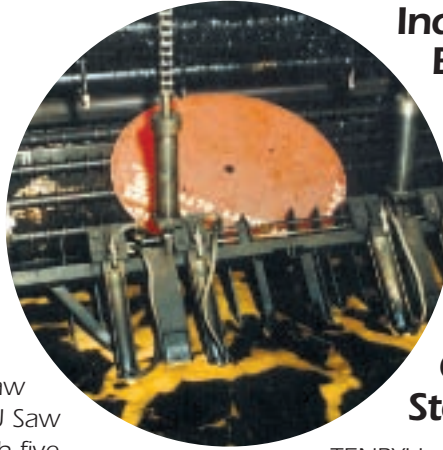
TENRYU AMERICA, INC.

TENRYU-Dependable, Precision Saw Blades

For the finest saw blades in the world, look no further than TENRYU. TENRYU is known around the globe as the premier manufacturer of quality saw blades. Satisfied customers attest to the reliable performance of TENRYU saw blades worldwide.

TENRYU America Inc. distributes saw blades in the Americas for TENRYU Saw Manufacturing Company, Ltd. With five manufacturing facilities, TENRYU is Japan's leading maker of industrial carbide-tipped saw blades.

TENRYU makes over 3,000 different types of carbide blades for woodworking, metalworking, plastic cutting and machining other composite materials.



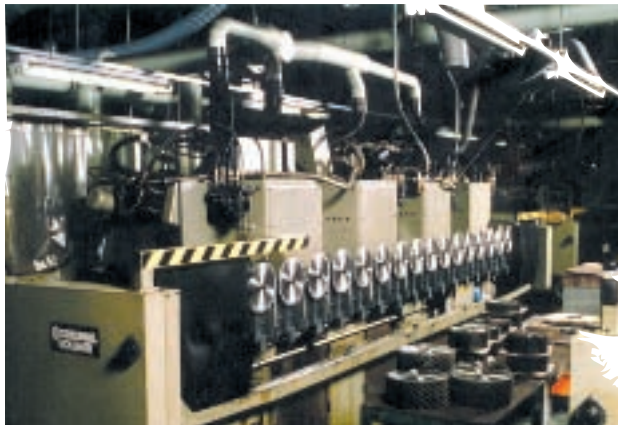
Individual Attention Given to Every Blade

Creating a TENRYU saw blade involves at least 40 separate processes that are executed by the most knowledgeable and experienced saw blade makers in the world. While produced in large quantity, every blade gets individual attention during production.

Only the Finest Steel Will Do

TENRYU uses only the very best steel in its quality blades. Incoming steel lots go through a host of inspections such as tests for consistency, tensile strength and hardness. Each lot must fall within a specified tolerance or it is not accepted. This means TENRYU suppliers must be especially careful manufacturing the steel to ensure quality.

Before production begins, every bit of steel is earmarked for a particular type of blade with specific instructions for each individual production plan. The blades are then blueprinted for the entire production run and coded so computers can track them from point one to final inspection.



Precision Plate Cutting, Hardening and Grinding Processes

TENRYU uses laser on high-end blades to incorporate thin-gap expansion slots. All TENRYU plates are hardened to at least 40 HRC so they can withstand heavy loads and continue working with excellent results.

All plates are guaranteed to be flat. TENRYU's proprietary flattening and surface grinding processes ensure plates that are distortion free and have uniform thickness.

TENRYU blends high-tech scientific techniques with old-world craftsmanship to ensure that its saw blades are unsurpassed in design and workmanship.

Designed for Ultimate Performance

Sound design is the foundation of TENRYU's high quality saw blades. To produce blades that give the finest cuts, our designers consider the material that will be cut, the type of machine that will be used for the cut and the desired outcome.

Hand Craftsmanship Assures Proper Tensioning

Hammering is a special craft that is learned only through years of experience. Much like ancient swordsmiths, the saw doctors at TENRYU's factory are artisans. After the saw doctor determines the appropriate tensioning for the blade's application, he will use special hammers to level and tension. The plate leaves his hands flat and true and within tolerance for run-out and balance.

Each Tooth Honed to a Mirror Finish

The TENRYU grinding process is a painstaking one. Each tooth is perfectly honed. Proprietary cooling methods assist with creating mirror-like finishes on the carbide teeth.



All Blades Individually Inspected

Each blade is individually inspected with high-powered magnifiers to examine each tooth for proper honing and consistent tip-to-body braze.

Satisfaction Guaranteed

If a customer feels he or she has a less than perfect blade, rest assured. Satisfaction is guaranteed.

A Word About Safety

To help prevent serious injury, or even death:

- **Read, understand and follow all instructions** and warnings in the tool instruction manual as well as those provided with recommended accessories. This is absolutely essential!
- **Keep all guards in place** and in proper working order.
- **Learn, know and respect** all that you can about the causes and preventions of kickback with your saw. If you don't know, don't use the saw.
- **Maintain blades** and other power tool accessories with care. Keep blades sharp and clean for best and safest performance.
- **Be sure to mount and secure blades** on proper and appropriate tools according to the tool's instruction manual.
- **Always unplug the tool** before mounting blades.
- **Consider work area environment.** Keep all bystanders and fellow workers a safe distance away.
- **Always wear safety goggles** or safety glasses with side shields complying with current national standard and a full face shield when needed. This requirement includes other necessary workers in your work area. They need to be protected too!
- **Be sure to securely clamp workpieces and support evenly.** Check frequently to be sure clamps remain secure.

Warranty Policy

Tenryu America, Inc. guarantees all Tenryu products against defects in material and workmanship. Tenryu America, Inc. will repair or replace any product that our inspection proves to be defective in material or workmanship.

This warranty does not cover: a) abuse; b) misuse; c) normal wear and tear; d) improper application; e) failure to mount and secure product properly; f) alterations made to the product by other than Tenryu America, Inc. or Tenryu Authorized Facilities.

Tenryu America, Inc authorizes no other warranty; written, verbal or implied.

Should you suspect a problem, call 1 (800) 951-SAWS(7297) and request a RGA form with a pre-assigned RGA#. Then send the product, freight prepaid, to Tenryu America, Inc. at 3601 Hargrave Drive, Hebron, KY 41048. The RGA form listing the complete description of the cutting application, machine being used, material description, etc. **must** be submitted with the product being claimed.

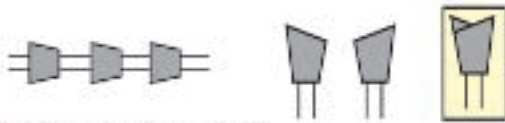
Tenryu will do its very best to conduct a prompt inspection and give a quick resolution to each claim request submitted properly.

Contents	
Alumi-Cut (AC) Series	19
Board-Pro & Board Pro plus (BP)Series	7
Brush Cutter (GR)Series	29
Cord-Free (CF)Series	5-6
Diamond-Pro (DA)Series	27
Gold Medal Dado (GMD)	14
Gold Medal Series(GM)	13
Industrial Series (IW, IL, IS)	26
Industrial Series (IL, IW) for Sliding Table Saws	25
Mel-Pro (ML) Series	15
Miter-Pro & Miter-Pro PLUS (MP) Series	10
Panel-Pro (PP) Series	16
Plastic Cutter (PC) Series	17
Power Tool Series (PT) for Miter & Radial Arm Saws	9
Power Tool Series (PT) for Portables & Small Table Saws	7-8
Pro Series for Non-Ferrous (PRA)	20
Pro Series for Plastic (PRP)	17
Pro Series for Solid Surface (PRS)	18
Pro Series for Wood Materials (PR)	12
Rapid-Cut (RS) Series	11
Rescue Blades (PT)	29
Silencer (SL) Series	9
Steel-Pro (PRF) Series	21
Steel-Pro PLUS (PRF) Series	22
Steel Pro Select (PRF) Series	22
Steel-Pro STABILIZER (PRF) Series	23
Steel-Pro for Stainless (SPS) Series	24
Tenryu Super Diamond (TSD) Series	28
Reference/Blade Locator	30-42

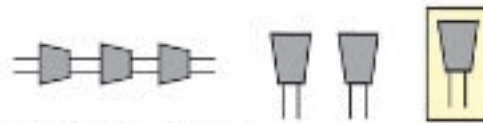
Tooth Geometry

TENRYU

Tooth Geometry



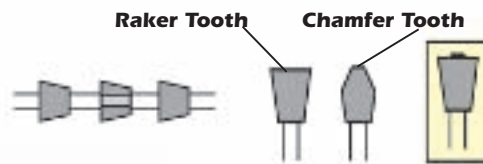
ATB (Alternate Top Bevel)
 Typical for cross-grain. Also used on ripping blades



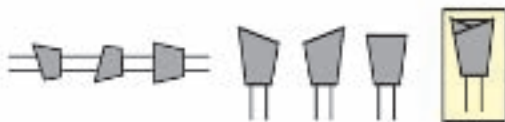
FTG (Flat Top Grind)
 - Most effective when cutting with the grain.



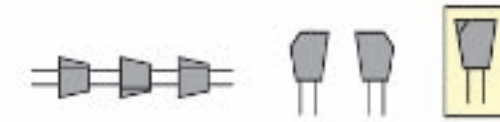
ATAF (Alternate Top Alternate Face)
 - Extra sharp cutting tips reduce load on saw.
 - Face beveling diverts cutting load left and right, instead of straight on.
 - Creates a better shearing action - especially in cross-grain, natural wood.



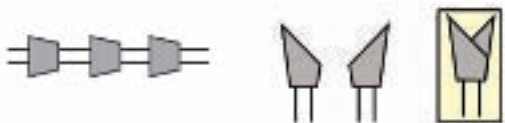
ICG (Triple Chip Grind)
 - Center of kerf is cut first. Then FLAT-TOP RAKER cleans out chips and widens the cut.
 - Commonly used for longer SHARP-LIFE in hard materials. Also good for ripping if RAKE is POSITIVE



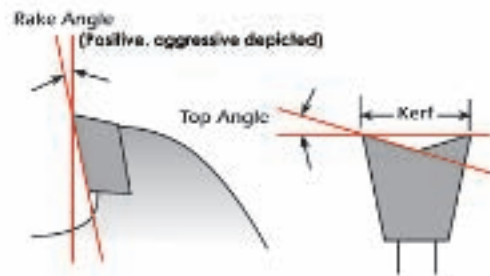
ATAFR (Alternate Top Alternate Face w/ Raker)
 - Also known as ATBR. **(If no face bevel)**
 - The FLAT-TOP RAKER sits LOWER, adds stability during cut and helps clean out and eject chips



MTCG (Modified Triple Chip Grind)
 - Commonly used for mild steel cutting



HATB (High Alternate Top Bevel)
 - Steep, top bevel angle grind, combined with unaggressive rake angle for chip free cuts in melamine and the finest plywoods.



New Items

TENRYU is constantly developing new blades to meet the high demands of our customers. Throughout this catalog you will see many exciting new items.

General Rules Of Thumb

General Rules of Thumb

Relating to Circular Saw Blades

More Teeth =

- Smoother Finished edges.
- Better for THIN materials.
- Slower cut.
- "Heavier" (harder to push) feeds.
- Increased load (amp draw) on the saw.
- Increased heat build-up at the tip.

Fewer Teeth =

- Faster cutting.
- Better for THICK materials.
- "Lighter" (easier to push) feeds.
- Reduced load (amp draw) on the saw.
- "Cooler" running tips for longer sharp-life.

Thin Kerf vs. Standard Kerf

Thin Kerf =

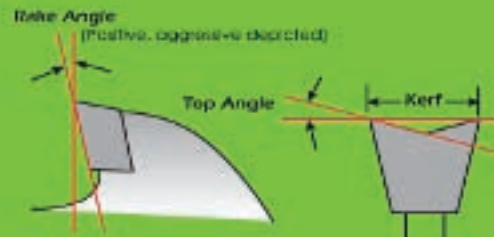
- Saves saw power.
- Reduces material waste.
- Cuts faster and easier.
- Cooler cutting tips.
- Requires SUPERIOR BLADE BODY (plate) technology to manufacture successfully.

Standard Kerf =

- Generally, heavier duty.
- Tendency for straighter cuts in severe cutting applications.
- Requires far greater saw power.
- "Hotter" running tips reduce SHARP-LIFE.
- Easier and less costly to manufacture.

Rake Angles:

a.k.a Hook Angles



When considering blades, refer to rake angle specifications in our catalog.

Aggressive Rake

vs.

Neutral or Negative Rake

Higher, Positive Rake Angles

- More aggressive and more efficient cutting.
- Greater tendency to "grab" materials.
- "Lighter" (easier to push) feeds.
- Cooler cutting tips (for longer "sharp-life").

1. Best suited for TABLE SAW applications.
2. NOT recommended for thin materials on MITER SAWS.
3. AVOID USE on RADIAL ARM saws. The potential for dangerous climb-cuts may exist

Neutral(0) and Negative Rake

- Less aggressive, less efficient.
- Less tendency to "grab". Less "pull".
- Somewhat smoother edges.
- "Heavier" (harder to push) feeds.
- "Hotter" running tips reduce SHARP-LIFE

1. Well suited for TABLE SAW, MITER SAW and RADIAL ARM SAW use.
2. Less aggressive and better for thin or "splintery" material.
3. Much better for RADIAL ARM SAWS than positive rake angles

Tool Application Symbol Legend

The following symbols are used throughout this catalog to indicate the types of tools/machinery that certain series of blades are intended to be used with to achieve the highest performance and longevity.



Table Saw



Low RPM
Dry Cut Saw



Panel Saw



Circular Saw



Miter Saw



Angle Grinder



Radial Arm Saw



Battery Powered Saw



Gas Saw

Cord Free Series



First and MOST COMPLETE LINE of premium saw blades made especially for cordless saws.

The growth in the cordless saw industry has created a void when it comes to accessory blades. TENRYU has filled the void.

Blades for cutting wood, plastic, aluminum and steel with the most popular cordless machine models are now available- all with TENRYU quality!

EACH BLADE FEATURES:

- Ultra-thin, perfectly tensioned steel plates for true run. This saves precious battery power and life.
- Precision honed, high-grade carbide for easy, smooth cuts and long life.
- Tooth configurations to meet specific cutting material and thickness applications.

CORD-FREE SERIES for WOOD MATERIALS*

Model #	Dia	Teeth	Arbor	Grind	Kerf	Rake	Application
CF-08520	3-3/8"	20	15mm	ATB	.039"	10	For cutting wood on 3-3/8" cordless saws. Makita and B&D
CF-13530W	5-3/8"	30	10mm	ATAF	.047"	20	For woodworking on 5-3/8" cordless saws. DeWalt & Bosch
CF-14036W	5-1/2"	36	10mm	ATAF	.063"	15	For wood on 5-1/2" cordless saws. Craftsman & Ryobi
CF-15218W	6"	18	1/2"	ATAF	.063"	15	For wood cutting on 6" cordless saws. Porter Cable
CF-15236W	6"	36	1/2"	ATAF	.063"	15	For finer cuts in wood & for thin materials on 6". Porter Cable
CF-16524W	6-1/2"	24	5/8"KO	ATAF	.059"	20	For quality woodworking on 6-1/2" cordless. Many Manufacturers
CF-16540W	6-1/2"	40	5/8"	ATAF	.059"	20	For finer cuts on 6-1/2" cordless saws. Many Manufacturers

*See also: Power Tool Series, Ultra-Thin Blades.....(Page 8)
Silencer Series, Ultra-Thin Blades.....(Page 9)

CORD-FREE SERIES for PLASTICS

Features TENRYU'S "No-Melt" Tip Design

Model #	Dia	Teeth	Arbor	Grind	Kerf	Rake	Application	Fits
CF-15256P	6"	56	1/2"	ATB	.063"	0	For plastic cutting on 6" cordless saws.	Porter Cable
CF-16560P	6-1/2"	60	5/8"	ATB	.079"	0	For plastic cutting on 6-1/2" cordless saws.	Many Manufacturers

CORD-FREE SERIES for NON-FERROUS METALS

Non-Ferrous Metals Include Aluminum, Brass, Bronze, Copper, etc.

Model #	Dia	Teeth	Arbor	Grind	Kerf	Rake	Application	Fits
CF-15254A	6"	54	1/2"	TCG	.063"	0	For aluminum cutting on 6" cordless saws.	Porter Cable
CF-16560A	6-1/2"	60	5/8"	ATB	.079"	0	For aluminum cutting on 6-1/2" cordless saws.	Many Manufacturers

CORD-FREE SERIES for FERROUS METALS

Mild Steel

Model #	Dia	Teeth	Arbor	Grind	Kerf	Rake	Application	Fits
CF-13530M	5-3/8"	30	10mm	MTCG	.059"	0	For mild steel on 5-3/8" cordless saws.	DeWalt & Bosch
CF-13550M	5-3/8"	50	10mm	MTCG	.055"	0	For thinner steel on 5-3/8" cordless saws.	DeWalt & Bosch
CF-15238M	6"	38	1/2"	MTCG	.063"	0	For mild steel cutting on 6" cordless saws.	Porter Cable
CF-16548M	6-1/2"	48	5/8"	MTCG	.079"	0	For mild steel on 6-1/2" cordless saws.	Many Manufacturers
CF-17340M	6-3/4"	40	20mm	ATB	.071"	0	For mild steel on 6-3/4" saws.	DeWalt

CORD-FREE SERIES – SINTERED, DIAMOND BLADE

For Concrete Materials, Thin Tile, Grout, and Fiberglass

Model #	Dia	Teeth	Arbor	Grind	Kerf	Rake	Application	Fits
CF-085D	3-3/8"	RIM	15mm	N/A	N/A	N/A	See above.	Makita and B&D

Board Pro Plus & Board Pro Series



The **BEST CHOICE** for
LONG LASTING PERFORMANCE
when cutting Fiber Cement Board.

Fiber Cement Board is a very abrasive material that wears down normal carbide very quickly. The TENRYU BOARD-PRO PLUS incorporates PCD (Poly-Crystalline Diamond) tips for longer life.

EACH BOARD-PRO PLUS BLADE FEATURES:

- Perfectly-tensioned, hardened tool-steel plates for flat, true run.
- **Select quality PCD (Poly-Crystalline Diamond) faced tips for longer life.**
- Extra long blade life.
- LOWER COST PER CUT!
- LESS DUST than traditional blades produce.
- Designed for cutting multiple stacked sheets.

BOARD -PRO PLUS SERIES - Poly-Crystalline Diamond Faced Tips

Model #	Dia	Teeth	Arbor	Grind	Kerf	Rake	Application
BP-18505	7-1/4"	5	5/8"KO	FTG	.091"	12	Single/Stacked Sheets
BP-25506	10"	6	5/8"	FTG	.098"	8	Single/Stacked Sheets
BP-30508	12"	8	1"	FTG	.098"	8	Single/Stacked Sheets

EACH BOARD-PRO BLADE FEATURES:

- Perfectly-tensioned, hardened tool-steel plates for flat, true run.
- **Select quality carbide grade.**
- TENRYU quality craftsmanship.
- Economically priced.
- LESS DUST than traditional blades produce.

BOARD-PRO SERIES – Special Grade Carbide Tipped

Model #	Dia	Teeth	Arbor	Grind	Kerf	Rake	Application
BP-18524	7-1/4"	24	5/8"KO	.075"	ATAF	10	Excellent for fast cuts, 1-2 sheet thickness.
PT-18540CB	7-1/4"	40	5/8"KO	.073"	ATAF	12	Great for finer, single sheet cutting.
BP-25532	10"	32	5/8"	.091"	ATAF	5	Excellent for fast single sheet cutting.
BP-30540	12"	40	1"	.091"	ATAF	5	Excellent for fast single sheet cutting

Framing Blades* - Power Tool Series



PT-18524AM
GENERAL PURPOSE

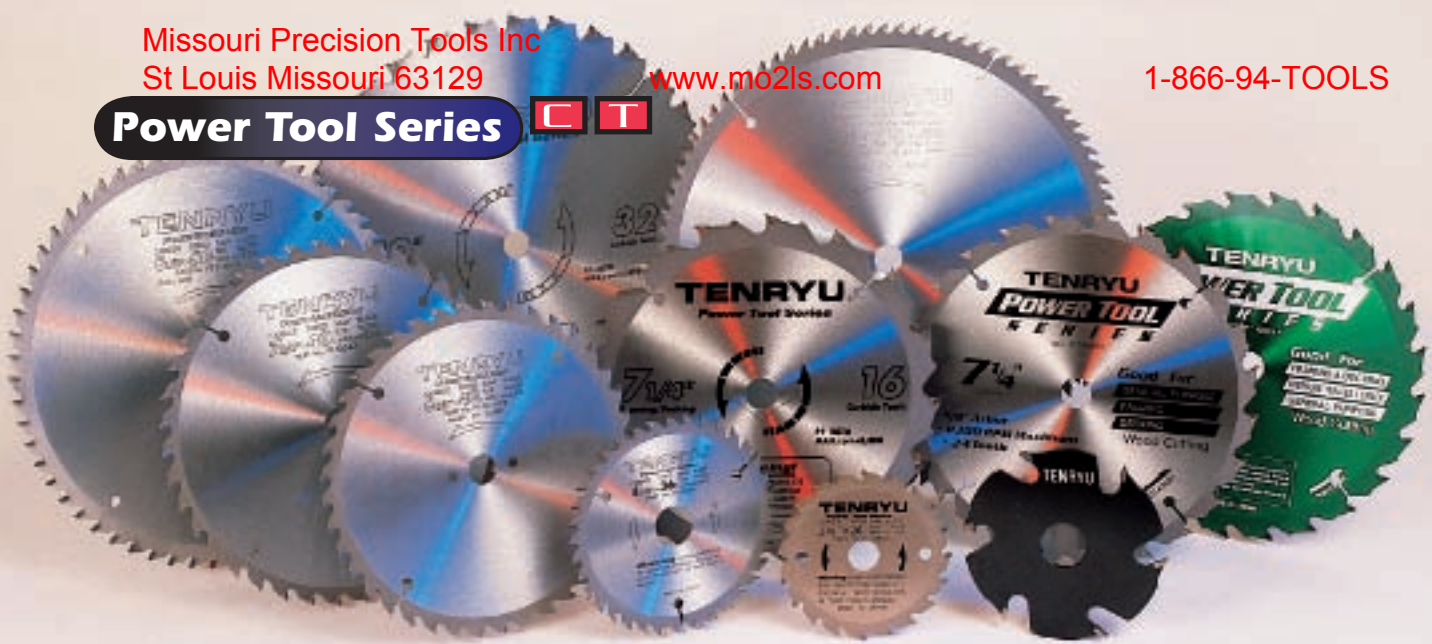
FAST & SMOOTH
PT-18524V
HIGH PERFORMANCE



PT-18524P
WET OR PRESSURE TREATED

*See page 8 for blade specifications & applications

Power Tool Series



Power Tool Series for the Contractor

Exceptional features and superior quality, Thin Kerf

TENRYU'S comprehensive line of blades for portable and stationary power tools. More variety, better quality and greater value. Sizes range from 4" to 14" for most types of applications. The TENRYU **PT SERIES** goes on to include thin kerf wood cutting blades designed especially for smooth cuts on miter and slide-compound. See below.

BLADE FEATURES:

- Fully hardened, expertly tensioned tool steel bodies absorb impact, remain flat and true, and resist excess heat build-up.
- High-grade, C-3, fine-grain tungsten carbide tips resist erosion for extended blade life.
- Aggressive rake angles for maximum cutting speed and efficiency.
- Each tip is precision honed on all four exposed surfaces. This minimizes micro-chipping along the sharp edge of the tip and results in a sharper, longer-lasting edge.
- Thin kerf for less waste and lighter cutting performance (reduced feed pressure).
- Inserted tooth design on some models greatly increases the body-to-tip braze area for greater support and tip strength.
- Expansion slots and/or variable pitch gullets keep blade true under stressful work loads.
- Can be resharpened for extended blade life.

POWER TOOL SERIES - Primarily for Portable Saws and Table Saws.

Model #	Dia	Teeth	Arbor	Grind	Kerf	Rake	Application
PT-10024	4"	24	20mm	ATAF	.055"	18	For woodworking on Makita 4" trim saw.
PT-10006-1	4"	6	22mm	FTG	.157"	20	For very clean and accurate biscuit slots in all woods.
PT-10006-2	4"	6	22mm	ATAFR	.157"	25/-15	For exceptionally clean and smooth biscuit slots in all woods.
PT-11036	4-3/8"	36	20mm	ATAF	.063"	15	For fine trim work on corded Makita trim saws.
PT-11536	4-1/2"	36	3/8"	ATAF	.063"	15	For clean and easy trim work on the Porter Cable trim saw.
PT-14036	5-1/2"	36	5/8"/1/2"	ATAF	.063"	15	For fine and easy trim work on Makita or Skil circular saws.
PT-15236	6"	36	1/2"	ATAF	.063"	15	For excellent results on 6" Porter Cable corded or cordless saws.
PT-16524	6-1/2"	24	5/8"KO	ATB	.079"	20	For woodworking on 6-1/2" corded saws. FAST!
PT-16524-T	6-1/2"	24	5/8"KO	ATAF	.059"	20	Ultra-thin for very fast and easy work on 6-1/2" corded or cordless saws.
PT-16540	6-1/2"	40	5/8"KO	ATB	.079"	20	For finer cuts on corded 6-1/2" saws.
PT-16540-CR	6-1/2"	40	BEVEL	ATB	.063"	18	For use on the CRAIN JAMB SAW for carpet/flooring installers
PT-16540-T	6-1/2"	40	5/8"KO	ATB	.063"	18	ULTRA-THIN kerf for fine work on corded or cordless saws.
PT-16552-T	6-1/2"	52	5/8"KO	ATAF	.063"	18	ULTRA-THIN kerf for SUPER clean work on 6-1/2" saws.
PT-18516B	7-1/4"	16	5/8"KO	ATB	.073"	27	Our super fast framing and ripping blade with INSERTED teeth.
PT-18520B	7-1/4"	20	5/8"KO	ATB	.073"	27	<i>Fast and Furious</i> 20 tooth INSERTED TOOTH blade for framers.
PT-18524AM	7-1/4"	24	5/8"KO	ATB	.070"	20	The AMIGO 24 tooth contractor blade. Fast with long cutting life.
PT-18524-P	7-1/4"	24	5/8"KO	ATB	.070"	20	BULLFROG. The choice when cutting pressure treated or wet lumber. URETHANE COATED.
PT-18524V	7-1/4"	24	5/8"KO	ATB	.070"	20	CITATION. The unique VARIABLE PITCH framing blade for FAST, smooth cutting.
PT-18540	7-1/4"	40	5/8"KO	ATB	.073"	27	Spectacular INSERTED TOOTH finish blade. Great performance.
PT-18540B	7-1/4"	40	5/8"KO	ATAF	.063"	18	ULTRA-THIN kerf for finish cross-cutting. Bulk packaged.
PT-18540-T	7-1/4"	40	5/8"KO	ATB	.063"	18	ULTRA-THIN blade for finish work on circular or trim saws.
PT-18552-T	7-1/4"	52	5/8"KO	ATAF	.063"	18	ULTRA-THIN, ultra-fine blade for trim work. For finest cuts
PT-20360	8"	60	5/8"KO	ATAF	.087"	5	A no-nonsense clean cutting 8" woodcutting blade. Also for Panel saws.
PT-21018	8-1/4"	18	5/8"KO	ATB	.075"	25	Fast cutting for woodworking and ripping on table or circular saws.INSERTED TOOTH DESIGN.
PT-21040	8-1/4"	40	5/8"KO	ATB	.079"	15	The tremendously popular 8-1/4" Power Tool Series blade. For table or portable saws.
PT-21060	8-1/4"	60	5/8"KO	ATAF	.079"	12	For fine cuts in wood with a table saw or circular saw.
PT-26036	10-1/4"	36	5/8"KO	ATAF	.079"	20	For woodworking on modified circular saws.

Power Tool Series



For Miter and Slide Miter Saws

The "PT" Series blades for miter, slide miter, and radial arm saws range in sizes from 8-1/2" for the popular Hitachi through 12" diameters. 14" blades for older saws can be found on page 12 in our Pro Series for Wood. 15" miter saw blades are available in our Miter-Pro Series on page 10.

NOTE: This series may also be used for crosscutting applications on tables saws.

EACH BLADE FEATURES:

- Thin kerf design is easier on miter saw motors and brakes.
- Fully hardened, expertly tensioned tool steel bodies.
- Fine grain tungsten carbide tips with fine grit honing for keen edges.
- Excellent price/value

POWER TOOL SERIES - For Miter or Slide Miter Saws

Model #	Dia	Teeth	Arbor	Grind	Kerf	Rake	Application
PT-21624	8-1/2"	24	5/8"	ATB	.087"	15	A fast cutting blade for use on 8-1/2" saws in thick wood.
PT-21640	8-1/2"	40	5/8"	ATB	.087"	15	A super blade for use on 8-1/2" saws in wood.
PT-21660-1	8-1/2"	60	5/8"	ATAF	.079"	5	A super performer on 8-1/2" miter saws.
PT-21680	8-1/2"	80	5/8"	ATAF	.087"	10	For extra-clean cuts in wood and thin products.
PT-23040	9"	40	5/8"	ATAF	.087"	5	Our Power Tool Series blade for 9" miter or table saws.
PT-25540	10"	40	5/8"	ATB	.083"	0	Used for miter, radial arm or table saws.
PT-25550	10"	50	5/8"	ATAF	.091"	15	INSERTED TEETH. For use on miter saws. Great value.
PT-25560	10"	60	5/8"	ATB	.083"	0	Used for miter, radial arm or slide miter saws.
PT-25560D	10"	60	5/8"	TCG	.087"	10	Triple chip woodworking blade for man-made wood materials.
PT-25572	10"	72	5/8"	ATB	.083"	0	Clean performance on miter saws.
PT-25590	10"	90	5/8"	ATAF	.091"	10	For super clean cuts in thin wood on miter saws.
PT-26036	10-1/4"	36	5/8"KO	ATAF	.079"	20	For woodworking on modified circular saws.
PT-30560	12"	60	1"	ATAF	.094"	3	Thin kerf. Outstanding value. Excellent woodworking miter or radial arm saw blade for thick stock.
PT-30580	12"	80	1"	ATAF	.094"	5	Thin kerf. Fine cut-off blade for woodworking on miter or radial arm saws for medium stock.
PT-305100	12"	100	1"	ATAF	.094"	5	Thin kerf. Extra clean cuts in wood on your miter or radial arm saw for thin stock.

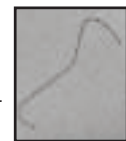
Silencer Series



For Slide-Miter Saws, conventional Miter Saws, and crosscutting with Portable Saws.

EACH BLADE FEATURES:

- New vibration dampening system featuring patented TENRYU resin bond filled laser cut body slots.
- Meticulous, hand hammer plate tensioning for a flatter blade and truer cuts



Smoother Cuts

Cleaner Edges

Quieter Cutting

Longer Sharp-Life

Model #	Dia	Teeth	Arbor	Grind	Kerf	Rake	Application
SL-16552	6-1/2"	52	5/8"KO	ATAF	.063"	18	Extra smooth crosscuts using cordless and portable saws
SL-18552	7-1/4"	52	5/8"KO	ATAF	.063"	18	Extra smooth crosscuts using portable and circular saws
SL-21660	8-1/2"	60	5/8"	ATAF	.079"	5	Extra smooth cuts on 8-1/2" slide-miter saws
SL-25572	10"	72	5/8"	ATAF	.110"	10	Extra smooth cuts in various thickness wood on all types of miter saws.
SL-305100	12"	100	1"	ATAF	.110"	5	Extra smooth cuts in various thickness wood on all types of miter saws.

"Choose a saw blade with built in noise and vibration dampening."

OSHA's "Selection Rule No.2 - Selecting a saw blade"



TENRYU's ultimate woodworking blade for Miter and Slide Miter saws



TENRYU responds to customer demand! We now have a line of blades specially designed for high performance, smoothest cuts and heavier duty applications on miter saws and slide-miter saws. These are our "Cadillac/Mercedes" grade miter saw blades.

TENRYU'S proven, super-true, laser-cut, hand tensioned steel plate with new and improved, patented, resin bond-filled expansion slots ensures smooth, accurate and quiet cuts.

Specially designed, top-quality, micro-grain carbide tips, honed to a precision edge with 600 grit diamond wheels cut clean and easy.

Rake angle design prevents lifting of workpiece but does not make your saw overwork. The result is a safer, chip-free and smooth cut.

EACH BLADE FEATURES:

- Fully-hardened, expertly-tensioned tool steel bodies for true and accurate cuts.
- High-grade, fine grain carbide tips for long life.
- Super-fine grit honing of carbide edge for clean, smooth cuts.
- Additional resin bond-filled expansion slots for even quieter cutting.

Miter-Pro Series

Model #	Dia	Teeth	Arbor	Grind	Kerf	Rake	Application
MP-25560CB	10"	60	5/8"	ATAF	.110"	-5	Miter-Pro.A great choice for fast and easy miter cuts in thicker wood.
MP-25580CB	10"	80	5/8"	ATAF	.118"	0	When smooth cuts are needed, especially in thinner stock.
MP-30560CB	12"	60	1"	ATAF	.118"	0	The 12" Miter-Pro for woodworking in thicker stock. Industrial strength.
MP-30580CB	12"	80	1"	ATAF	.118"	0	For smoother cuts, especially in thinner materials.
MP-305100CB	12"	100	1"	ATAF	.118"	0	For the smoothest cuts in the thinnest stock.
MP-305100CB2	12"	100	5/8"	ATAF	.118"	0	Use on double miter saws and Radial Arm Saws for woodworking.
MP-380100CB	15"	100	1"	ATAF	.126"	0	None better for use on 15" miter saws. For woodworking.

Miter-Pro PLUS Series

All the features of our Miter-Pro series PLUS newly added technological improvements to make them better and heavier-duty than ever.

- Finest and smoothest cuts ever on your miter or radial arm saws.
- Best suited blade for the latest Slide Miter Saws as well as traditional Miter Saws.
- Negative rake angle tooth design (-3 degree) - For finer cuts in thin or brittle materials.
- Reduced tendency to grab materials being cut.
- **Additional, Resin-Filled Silencing Slots in plate eliminate troublesome vibration for smoother cuts, reduced noise and longer sharp-life.**



Model #	Dia	Teeth	Arbor	Grind	Kerf	Rake	Application
MP-25560AB	10"	60	5/8"	ATAFR	.110"	-3	Miter-Pro Plus. A great choice for fast and yet super smooth miter cuts in thicker wood
MP-25580AB	10"	80	5/8"	ATAFR	.110"	-3	Smoothest cutting, heavy duty performance in the widest range of material thicknesses
MP-255100AB	10"	100	5/8"	ATAFR	.110"	-3	When super-smooth cuts are needed, especially in thinner stock
MP-30560AB	12"	60	1"	ATAFR	.118"	-3	The 12" Miter-Pro Plus for woodworking. Industrial strength. Best for thicker materials
MP-30580AB	12"	80	1"	ATAF	.118"	-3	Smoothest cutting, heavy duty performance in the widest range of material thicknesses
MP-305100AB	12"	100	1"	ATAFR	.118"	-3	When super-smooth cuts are needed, especially in thinner stock
MP-305100AB2	12"	100	5/8"	ATAFR	.118"	-3	When super-smooth cuts are needed, especially in thinner stock
MP-355100AB2	14"	100	5/8"	ATAFR	.118"	-3	For Double Miter Saws. Great for picture frame mouldings.
MP-380100AB	15"	100	1"	ATAFR	.126"	-3	Smoothest cutting, heavy duty performance in wide range of material thicknesses

SEE PAGE 26 for Extra Heavy-duty Blade choices
1-866-948-6657 314-487-2686 Fax - 314-487-2868

Rapid Cut Series 

TENRYU'S Premium Heavy Duty, Industrial, Multi-Purpose Blades

We offer an entire line of industrial duty "work horse" blades that cover the 10 to 16 inch diameter range. These blades are all meant to be used on shop tools such as table saws. In addition, many models can be used on more specialized machinery with arbor hole adjustments. Each blade has a large carbide tip following the European tradition and can be resharpened up to 20 times.

Value is key here. These blades are priced very competitively. The small shop and corporate giant alike will appreciate getting quality industrial blades at attractive prices.

EACH BLADE FEATURES:

- Individually hand-hammered, fully heat hardened steel plates for flat, true, wobble-free operation.
- Aggressive grind angles for easy performance in heavy-duty jobs. Honing carried out at 400 grit to limit microchipping and produce a very keen edge.
- Large, high-grade carbide tips selected for long life in woodworking applications.
- Ample side clearance provides for air flow between carbide and workpiece - limits likelihood of burning even on heavy rips. This also prevents premature dulling.

Rapid-Cut Series

Model #	Dia	Teeth	Arbor	Grind	Kerf	Rake	Application
RS-25524CBN	10"	24	5/8"	ATB	.126"	20	Fast cutting rip blade for industry. Great value and performance.
RS-25524U	10"	24	5/8"	ATB	.079"	20	ULTRA-THIN 10" rip blade. Only .079" kerf. Fast and clean, even without stabilizer plates.
RS-25536CBN	10"	36	5/8"	ATB	.126"	20	Fast cutting general purpose industrial blade. Great value.
RS-25540	10"	40	5/8"	ATAF	.118"	15	Our very popular 40t Rapid-Cut blade for woodworking. Economically priced.
RS-25540U	10"	40	5/8"	ATAF	.079"	20	ULTRA-THIN kerf combination blade. Rip/cross. Only .079" kerf.
RS-25548CBN	10"	48	5/8"	ATB	.126"	20	For industrial cross cuts and rip cuts in all woods. Super value.
RS-25550	10"	50	5/8"	ATBR	.126"	15	TENRYU's Rapid-Cut planer-combination blade. Outstanding rip or cross.
RS-25550-2	10"	50	5/8"	ATBR	.126"	10	Super quiet planer combination blade. Due to resin-filled, laser slots in body. See photo.
RS-25560	10"	60	5/8"	ATAF	.118"	10	Clean cutting table saw blade. Very economical
RS-25560D	10"	60	5/8"	TCG	.125"	10	Full-kerf triple chip grind for durability in a wide variety of wood materials. Can also rip.
RS-30524CBN	12"	24	1"	ATB	.134"	20	Fast cutting rip blade for woodworking.
RS-30536CBN	12"	36	1"	ATB	.134"	20	Semi-smooth cuts in wood. Great for hardwoods.
RS-30548CBN	12"	48	1"	ATB	.134"	20	Clean combination blade for woodworking.
RS-30560	12"	60	1"	ATBR	.134"	15	12" Smooth cutting planer-combination blade. Rips and crosscuts in thick or thin material. Also excellent for plywood.
RS-35524CBN	14"	24	1"	ATB	.142"	20	Fast cutting for work in hardwoods. Industrial quality.
RS-35536CBN	14"	36	1"	ATB	.142"	20	Fast cutting for work in hardwoods. Industrial quality.
RS-35548CBN	14"	48	1"	ATB	.142"	20	Semi-smooth cuts in hardwoods. Good rips and crosses.
RS-40536CBN	16"	36	1"	ATB	.134"	20	Fast and easy cuts on 16" saws.
RS-40560CB	16"	60	1"	ATAF	.126"	15	Semi-smooth work in wood and wood products on 16" saws. See Also 16" x 100 tooth in our Pro Series for Wood, page 12

"THE SMOOTHEST OF ALL THE ATBR BLADES IN OUR TEST."

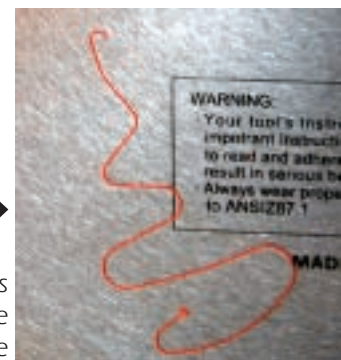
WOOD MAGAZINE FEB 2000 PAGE 67



RS-25550-2

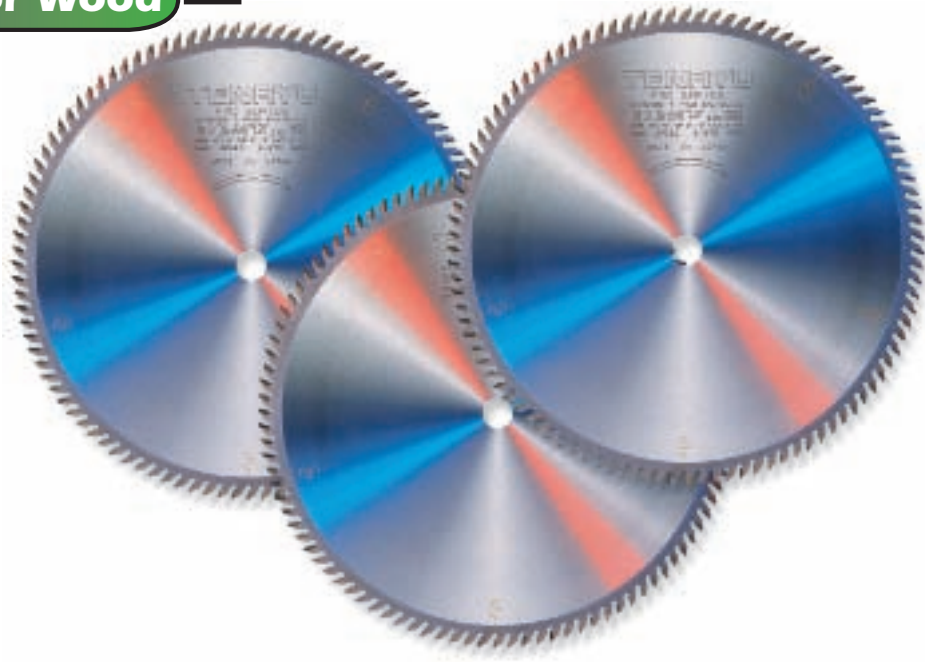
Enhanced cutting performance even beyond our acclaimed RS-25550.

Laser cut, resin filled slots improve cutting performance by dampening vibration and noise



SEE PAGE 26 for Extra Heavy-duty Blade choices

Pro Series for Wood **T**



TENRYU'S superior quality line for professional craftsmen

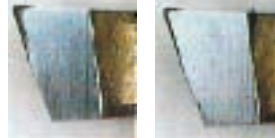
Laser cut, press tempered, individually hammer tensioned, and chrome-plated bodies bring the cutting edge to the workpiece with unparalleled precision. Fine grain carbide tips are given the tooth configuration to do the job right. Pro Series blades are also made to handle non-ferrous metal cutting, plastics, or solid surface materials. These blades are made to satisfy the most demanding craftsmen.

EACH BLADE FEATURES:

- Fully-hardened, expertly-tensioned tool steel bodies for true and accurate cuts.
- High-grade, fine grain, C-4 wear-resistant carbide tips for long life.
- Fine grit honing of carbide edge for clean, smooth cuts.
- Resin bond-filled expansion slots act as built in dampeners- keeping your cuts quiet and the saw's plate vibration-free!

"The cuts were so quiet and effortless that I thought I had forgotten to raise the blade."
10", 60 tooth, PR-25560D
Fine Woodworking, Nov/Dec 1997 (page110)

STANDARD BLADE TENRYU PRO SERIES



Reduced vibration results in extended life of tip edge. Note comparison of standard blade to TENRYU blade.

(After cutting 4.3 miles of particle board)

Compare Tenryu's Chip-Free Performance

TENRYU blades offer chip-free work in many laminates. Even on the bottom of 2-sided laminate.

Pro Series for Wood Materials

Model #	Dia	Teeth	Arbor	Grind	Kerf	Rake	Application
PR-25560CBN	10"	60	5/8"	ATB	.110"	20	Pro Series for wood. A fast and clean cutting blade for table saws.
PR-25560D	10"	60	5/8"	TCG	.110"	10	Triple chip grind for durability. Great woodworking blade. See quote above.
PR-25580CBN	10"	80	5/8"	ATB	.118"	20	Our popular 80 tooth woodworking Pro Series blade. Better for thinner materials.
PR-25580D	10"	80	5/8"	TCG	.118"	10	With triple chip grind for endurance. Excellent woodworking blade.
PR-255100AB	10"	100	5/8"	ATAFR	.118"	15	For use in veneers and thin stock. Unparalleled performance. See also Mel-Pro (page 15-16) for cutting veneer-faced plywood.
PR-30560CBN	12"	60	1"	ATB	.118"	20	Great 12" table saw blade. Positive rake for thick stock.
PR-30580CBN	12"	80	1"	ATB	.118"	20	Fine cut-off on table saws. Positive rake.
PR-305100AB	12"	100	1"	ATAFR	.118"	15	Great for cutting veneer and thin stock on table saws.
PR-35580AB	14"	80	1"	ATAFR	.118"	15	For fine woodworking with your 14" saw. Best suited for cutting thick materials. Excellent value.
PR-355100AB	14"	100	1"	ATAFR	.118"	15	For cutting veneers and brittle stock when finest cuts are needed.
PR-405100CBN	16"	100	1"	ATB	.126"	20	Super clean cuts in wood on 16" saws; Especially for thin stock

SEE PAGE 26 for Extra Heavy-duty Blade choices

Gold Medal Series



“...the quietest cutting blade in our test...”
Wood Magazine, Feb. 2000 (page 65)

Why??...(The least vibration is why!)

GOLD MEDAL
One Table Saw, One Blade: NO PROBLEM!



This is the top of the line choice for the serious craftsman who wants one superior table saw blade for most all woodworking.

Saw plate run-out less than .002” for flat true run. Built-in dampening system reduces vibration, making cuts quieter and more precise. Performs smooth, easy crosscuts and rips. Even does a great job on double sided laminates.

Carbide tip material is an extra hard, C-4 and super fine grain with corrosion inhibitors to give the keenest edge and longest sharp-life.

EACH BLADE FEATURES: **No Stabilizer Plates Needed!**

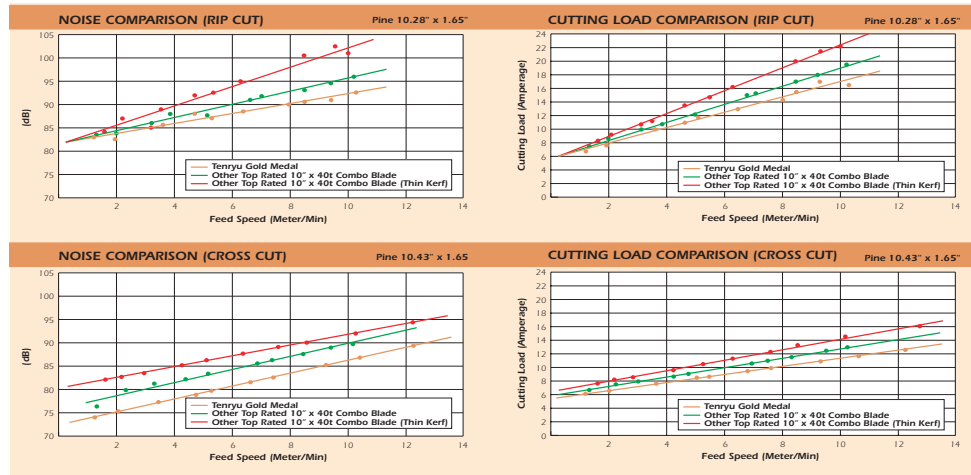
- Fully-hardened, expertly-tensioned tool steel body for true and accurate cuts, meticulously hand hammer tensioned.
- A new grade of extra hard carbide resists both abrasive and chemical wear better than standard grades for longer life.
- Resin bond-filled expansion slots to absorb any vibration and reduce cutting noise.
- TENRYU'S fine grit honing ensures mirror finish on carbide for the keenest possible edges and a super clean cut.

Gold Medal Series

Model #	Dia	Teeth	Arbor	Grind	Kerf	Rake	Application
GM-25540	10"	40	5/8"	ATB	.111"	20	The highest quality combination blade you can buy. Rip or cross-cut in thick or thin materials.
GM-30560	12"	60	1"	ATB	.118"	20	The highest quality combination blade you can buy. Rip or cross-cut in thick or thin materials
GM-35560	14"	60	1"	ATB	.126"	20	The highest quality combination blade you can buy. Rip or cross-cut in thick or thin materials

"I have used this blade for a while now and am more impressed with it than before. I cannot believe the cut I get with this combination on oak veneer plywood"
Mike Bridges, Mike's Custom Woodworking

"An unexpected surprise is the ease of feed with your blade. I can not tell when the blade contacts the wood and I can tell no difference in pushing pressure when the stock clears the blade."
Hal Taylor, Hal Taylor Museum Quality Works of Art in Wood



Gold Medal Dado Set

Superior Cutting Performance

You know our Gold Medal Series to be the best all around blades made anywhere. The Gold Medal Dado Set will only add to TENRYU'S reputation as the brand of choice for the finest woodworking. This set produces super-clean dado edges with an astoundingly flat bottom surface in wood materials and even in melamine.

BLADE AND CHIPPER FEATURES:

- Fully heat-treated saw plates for superior endurance under heavy load.
- Individually hand hammer-tensioned for flat and true runs.
- Fine-grit honing of ALL sides of teeth for sharp, easy cutting action and long life.
- Super fine-grain carbide grade for longer life and easier resharping.
- Probably the lightest feeding dado you will ever experience!

Gold Medal Dado Set- GMD-20340 T

Model #	Dia	Teeth	Arbor	Kerf	Rake	Application
GMD-20340	8"	40	5/8"	13/16"	20	Extremely clean, flat bottom dado cuts in wood.
GMD-20340L	8"	40	5/8"	1/8"		Left outside cutter.*
GMD-20340R	8"	40	5/8"	1/8"		Right outside cutter.*
GMD-8C	8"	2	5/8"	1/8"		1/8" Chipper (2 each)
GMD-4C	8"	2	5/8"	1/4"		1/4" Chipper (1 each)
GMD-16C	8"	2	5/8"	1/16"		1/16" chipper (1 each)

GROOVE OPTIONS: 1/4", 5/16", 3/8", 7/16", 1/2", 9/16", 5/8", 11/16", 3/4", 13/16"

NOTE: The part number for the complete set is GMD-20340. Should a user require individual pieces as numbered above, it will require a special order and will be quoted at the time of inquiry.

*Outer cutters cannot be used individually. The actual kerf of each is approx. 1/8". Placed together, the result is exactly 1/4".

**TB/F indicates that the outside blades are top-beveled in one direction only. Flat-topped "raker" tips are utilized in a 4 and 1 grind pattern. The chippers are flat-top grind to produce the nice, flat dado bottom surface.



... "Its C4 carbide teeth are thicker and taller than the Forrest blade, so you may just get a few more trips into the sharpening service with this blade before it needs a fresh set of teeth." ...

WOODWORKERS JOURNAL MAGAZINE
CHRIS MARSHALL
JUNE 2004

The Ultimate Melamine and Veneer-Faced Plywood Cutting Blade!

The Mel-Pro Series is a complete line of blades that solve problems associated with cutting **melamine** and other **laminated wood products**. Additionally, veneer-faced plywood can be cut without splintering at more reasonable feed speeds than in the past.

FINER CUTS- Precision ground carbide teeth set on hand-tensioned tool steel bodies produce finer cuts without chipping and "bottom-side blowout".

QUIETER- Patented resin bond-filled expansion slots effectively absorb vibration and reduce noise.

LONGER LIFE- High-grade, extra-hard, micro-grain, anti-corrosive carbide teeth fight both chemical and abrasive wear to remain sharp longer. There are a lot of blades on the market that can cut melamine but only the **TENRYU Mel-Pro** can cut it chip free, quieter, easier and longer.

Numerous requests for a better melamine blade prompted us to spend over a year of research and development to bring you the world's most advanced melamine cutting blade. The Mel-Pro features a fully hardened, expertly tensioned tool steel body that absorbs impact, remains flat and true, and resists excess heat buildup. The Mel-Pro's exclusive, red bond, resin filled expansion slots absorb vibration, reduce heat and permit the blade to run quieter than any other brand. The thin-kerf, mirror-like grind on super hard, specially designed carbide tips allow for lighter cuts and reduce friction heat buildup. The bottom line is **your bottom line** will look better when you reduce scrap, reduce sharpening costs and reduce noise in your shop with Mel-Pro blades.

Though Mel-Pro Blades are typically used on table saws, they also perform spectacularly well on Miter and Slide Miter Saws.

The ORIGINAL Mel-Pro Series

Model #	Dia	Teeth	Arbor	Grind	Kerf	Rake	Application
ML-21080AB	8-1/4"	80	5/8"	ATAFR	.110"	0	Our MEL-PRO blade for chip-free performance on 8-1/4" table saws.
ML-25580AB	10"	80	5/8"	ATAFR	.118"	0	Use this blade for cutting melamine and laminated wood materials and veneer-faced plywood.
ML-255100AB	10"	100	5/8"	ATAFR	.118"	0	For cutting thin stock melamine, laminated wood and veneers.
ML-305100AB	12"	100	1"	ATAFR	.126"	0	For cutting melamine and other laminated wood based materials.
ML-305120AB	12"	120	1"	ATAFR	.126"	0	Super-fine cuts in thin stock melamine and other laminated woods.
ML-355120AB	14"	120	1"	ATAFR	.126"	0	For cutting melamine and laminated woods. Super clean cuts.



Hi-ATB MELAMINE & VENEER PLYWOOD CUTTING BLADES!

EACH BLADE FEATURES:

- Hi-ATB design with negative (-5°) rake angle tooth geometry - NO TEAR OUT!
- Traditional full-kerf, "European Style" blade design
- C-4 hardness, super fine grain, anti-corrosive carbide tips for the keenest edges and extended sharp life.

Premium, Industrial Hi-ATB Series Features:

- Specially developed, top-grade, super fine grain carbide tip.
- Additional, "resin-filled, laser cut body slots" succeed in vibration dampening to an even greater extent
- Exhaustive, hand-hammer plate tensioning assures truer and smoother cuts.
- Longer Lasting than our competitors' or our economy series.

Model #	Dia	Teeth	Arbor	Grind	Kerf	Rake	Application
ML-21060H	8-1/4"	60	5/8"	HATB	.118	-5	Premium Hi-ATB Mel-Pro designed for 8-1/4" table saws
ML-25580H	10"	80	5/8"	HATB	.118	-5	For super-smooth cuts in melamine, laminated wood composites & veneer plywood
ML-255100H	10"	100	5/8"	HATB	.118	-5	Especially effective for cutting thinner stock of above materials
ML-30580H	12"	80	1"	HATB	.126	-5	For super-smooth cuts in melamine, laminated wood composites & veneer plywood
ML-305100H	12"	100	1"	HATB	.126	-5	Especially effective for cutting thinner stock of above materials
ML-355100H	14"	100	1"	HATB	.126	-5	For super-smooth cuts in melamine, laminated wood composites & veneer plywood

SEE PAGE 26 for Extra Heavy-duty Blade choices

Panel-Pro Series 

TENRYU'S professionals' choice for high performance panel saw cutting. The same, superior features and benefits of our Mel-Pro series in sizes to fit the most popular panel saws.



Excellent for long lasting, precise cuts in wood, wood composites, and laminated materials on panel saws.

Panel saws are often used to cut large sheets of "difficult" materials like MDF, melamine or particle board. These materials are laden with chemicals and adhesives which attack the carbide causing corrosion of the cutting edge. The Panel-Pro blades come equipped with our best anti-corrosive micro-grain carbide. That, plus our super-flat, perfectly tensioned plate adds up to very precise, long lasting performance on your panel saw!

For cutting aluminum materials on panel saws, see our Alumi-Cut Series blades **(page 19)**. For cutting Solid Surface Materials, see our Pro Series for Solid Surface **(page 18)**.

Try these blades even without the scoring saw- you'll love the results!

EACH BLADE FEATURES:

- Fully-hardened, expertly-tensioned tool steel bodies for true and accurate cuts.
- High-grade, extra hard, wear-resistant carbide tips for long life.
- Fine grit honing of carbide edges for clean, smooth cuts.
- Resin bond-filled expansion slots for reduced vibration and quieter cutting.

Panel-Pro Series

Model #	Dia	Teeth	Arbor	Grind	Kerf	Rake	Application
PP-20360AB	8"	60	5/8"	ATAFR	.110"	0	A Panel-Pro blade for 8" panel saws. Great for laminated woods.
PP-22060AB	220mm	60	30mm*	ATAFR	.110"	0	For use on popular European panel saws.
PP-30075AB	300mm	75	30mm*	ATAFR	.110"	0	For 300mm European design panel saws. No scoring saw needed.

*with pin-drive holes

**SEE PAGE 25 for NEW Sliding Table Saw Blades
(250MM, 300MM, and 350MM Diameters)**

Plastic Cutter Series **T M B**



TENRYU'S best value for quality cuts in a wide variety of plastics.

Thin Kerf!

Excellent Cuts!

The Plastic Cutter series offers true quality, variety, and affordability. Designed for general purpose cutting applications, the Plastic Cutter blades will perform very well in a wide variety of plastic materials. Cutting plastics with the wrong blade results in chipping of brittle materials and/or melting of the cut edge. TENRYU Plastic Cutter blades are manufactured to strict tolerances to reduce chipping. In addition, the "no melt" grind pattern on the carbide teeth helps keep heat build-up down and prevents melting. Smooth, clean and melt-free cuts in PVC, acrylics, and other sheet plastics are made possible.

EACH BLADE FEATURES:

- Individually hammer tensioned steel plates for true run.
- Specially selected grade of carbide for excellent work in plastic.
- TENRYU'S super fine honing leaves a mirror-like finish on the carbide for clean and melt-free cuts.

Plastic Cutter Series

Model #	Dia	Teeth	Arbor	Grind	Kerf	Rake	Application
PC-10036	4"	6	20mm	ATB	.055"	10	For plastic cutting on 4" trim saws, including Makita.
PC-18560CB	7-1/4"	60	5/8" KO	ATAF	.079"	5	An excellent blade for use in plastic and acrylic materials on portable saws
PC-25580CB	10"	80	5/8"	ATAF	.102"	5	For cutting a wide variety of plastics on 10" saws.
PC-305100CB	12"	100	1"	ATAF	.110"	5	Fine cutting blade for working with plastics of all kinds.
PC-355100CB	14"	100	1"	ATAF	.118"	5	Plastic Cutter. For great performance in a variety of plastics.

CORD-FREE for PLASTICS- Designed specifically for use on cordless saws (See also page 6)

Model #	Dia	Teeth	Arbor	Grind	Kerf	Rake	Application
CF-15256P	6"	56	1/2"	ATB	.063"	0	For plastic cutting on 6" cordless saws (Porter Cable).
CF-16560P	6-1/2"	60	5/8"	ATB	.079"	0	For plastic cutting on 6-1/2" cordless saws (many manufacturers).

Pro Series for Plastics **T M**

TENRYU'S superior quality line for professional craftsmen

Laser cut, press-tempered, individually tensioned, and chrome-plated bodies bring the cutting edge to the workpiece with unparalleled precision. Fine grain carbide tips are given the tooth configuration to do the job right .

EACH BLADE FEATURES:

- Fully-hardened, expertly-tensioned tool steel bodies for true and accurate cuts.
- High-grade, fine-grain, C-4, wear-resistant carbide tips for long life.
- Resin bond-filled expansion slots act as built in dampeners - giving quiet cuts and reduced chipping!

Pro Series for Plastics

Model #	Dia	Teeth	Arbor	Grind	Kerf	Rake	Application
PRP-25580CB	10"	80	5/8"	ATAF	.125"	5	Pro Series for plastic. Exceptional cuts in standard stock.
PRP-255120AB3	10"	120	5/8"	ATAFR	.079"	0	For ultra clean cuts in thin plastic. Also cuts thin wood or non-ferrous materials.
PRP-305100CB	12"	100	1"	ATAF	.134"	5	Our superior plastic cutting 12" blade. None better.
PRP-355100CB	14"	100	1"	ATAF	.134"	5	Pro Series for plastic. Great for a variety of plastic materials.



Pro Series for Solid Surface



Premium design and craftsmanship

The Pro Series for Solid Surface (PRS) blade is the professional's choice when industrial quality is required. TENRYU'S built-in dampening system keeps noise and vibration to a minimum, allowing for super-clean, melt-free performance. Sizes are available for most popular types of saws from 7-1/4" to 18" in diameter, including panel saws. Triple chip, negative rake design for optimum performance in solid surface* and a variety of other materials.

*Solid surface is produced under trade names such as Corian®, Avonite®, Fountainhead® and others.

EACH BLADE FEATURES:

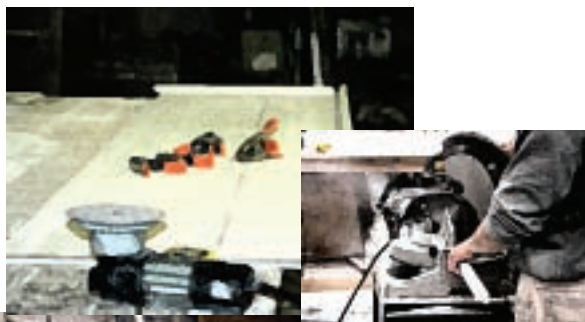
- Laser cut, fully-hardened tool steel plates for industrial use.
- Individually hand-tensioned plates for true, accurate cuts.
- Built-in dampening system to minimize vibration and reduce noise.
- Fine-grain, C-4, premium-grade carbide tips for smoother cuts and longer life.



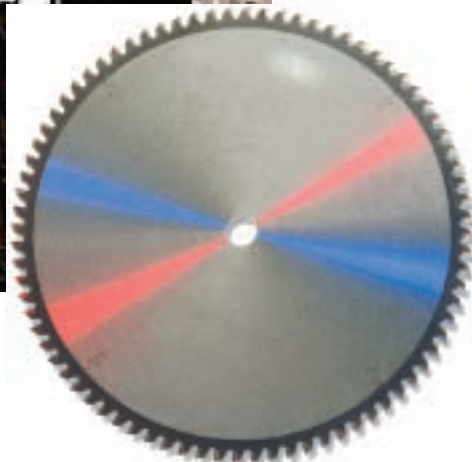
Pro Series for Solid Surface (PRS) Materials

Model #	Dia	Teeth	Arbor	Grind	Kerf	Rake	Application
PRS-18540	7-1/4"	40	5/8"KO	TCG	.094"	-5	For clean, easy cuts using portable saws.
PRS-20360	8"	60	5/8"	TCG	.094"	-5	For 8" panel saws and portable saws.
PRS-22064	220mm	64	30mm*	TCG	.102"	-5	For use on 220mm panel saws.
PRS-25560	10"	60	5/8"	TCG	.102"	-5	Excellent low heat performance in solid surface. Allows faster feed rates. For table or miter saw use.
PRS-25580	10"	80	5/8"	TCG	.102"	-5	Exceptionally clean cuts in thinner stock using table or miter saws.
PRS-30080	300mm	80	30mm*	TCG	.110"	-5	For 300mm panel saws. No scoring saw needed.
PRS-30580	12"	80	1"	TCG	.110"	-5	Great results on 12" saws. Faster feed rates in thick material.
PRS-305100	12"	100	1"	TCG	.110"	-5	Super clean cuts in thinner materials. For miter or table saw applications.
PRS-355100	14"	100	1"	TCG	.126"	-5	Excellent performance in a 14" blade.
PRS-405120	16"	120	1"	TCG	.134"	-5	Very clean cuts in solid surface materials.
PRS-455120	18"	120	1"	TCG	.134"	-5	Excellent heavy duty performance.

*with pin-drive holes



**SEE PAGE
26 for Extra
Heavy-duty
Blade choices**



The traditional, triple-chip/negative rake design of our "PRS" series blades may be used for a wide variety of cutting applications. You may call for TENRYU's technical support at (800) 951-SAWS (7297) from 8am-5pm Eastern time.

Alumi-Cut Series



TENRYU'S best value for your non-ferrous metal cutting needs. Thin Kerf. Excellent Cut Quality.

The Alumi-Cut Series offers true quality and affordability.

These blades are available in a wide variety of sizes to fit most popular job site and shop saws. Excellent results in aluminum, copper, brass, bronze and other non-ferrous metals. Even works well in many plastics. Also good for woodworking and plastic cutting when needed. Resharpenable for long life, the Alumi-Cut blades will help you improve your bottom line!

These blades are also an excellent choice for cutting laminated flooring (i.e.: Pergo®, etc.) with slide-miter or table saws.

EACH BLADE FEATURES:

- Fully-hardened, expertly-tensioned tool steel bodies for true and accurate cuts.
- Appropriate triple-chip grind pattern for non-ferrous metals.
- Quality carbide ground to precision.

Alumi-Cut Series

Model #	Dia	Teeth	Arbor	Grind	Kerf	Rake	Application
AC-10036	4"	36	20mm	ATB	.055"	10	For use on 4" trim saws, including Makita, for cutting aluminum.
AC-18560D*	7-1/4"	60	5/8"KO	TCG	.079"	0	The very popular 7-1/4" Alumi-Cut blade for non-ferrous metal. Also works in plastic.
AC-20360DN	8"	60	5/8"	TCG	.087"	-5	An exceptional Alumi-Cut for 8" saws. Also works in plastic.
AC-21060DN	8-1/4"	60	5/8"KO	TCG	.087"	-5	A great 8-1/4" blade for non-ferrous metals and plastics.
AC-21660DN*	8-1/2"	60	5/8"	TCG	.087"	-5	Our 8-1/2" Alumi-Cut blade for work in non-ferrous and plastic.*
AC-25560DN*	10"	60	5/8"	TCG	.087"	-5	A super easy cutting Alumi-Cut blade for thicker wall material
AC-25580DN*	10"	80	5/8"	TCG	.094"	-5	The hugely popular Alumi-Cut blade for clean non-ferrous work.*
AC-255100DN	10"	100	5/8"	TCG	.094"	-5	Especially for thin-wall extrusions and use on slide-miter saws.
AC-30580DN*	12"	80	1"	TCG	.110"	-5	Great for non-ferrous or plastics on miter or radial arm saws.*
AC-305100DN	12"	100	1"	TCG	.110"	-5	For thin stock non-ferrous and plastics on miter or RAS.
AC-355100DN	14"	100	1"	TCG	.118"	-5	Our 14" Alumi-Cut blade. Great value and performance.
AC-380100DN	15"	100	1"	TCG	.118"	-5	Fantastic for 15" miter saws for non-ferrous and plastics.
AC-405120DN	16"	120	1"	TCG	.134"	-5	An outstanding blade for non-ferrous cutting. Also works in plastics.

Cord-Free for Non-Ferrous Metals - Designed specifically for cordless saws (see page 6)

Model #	Dia	Teeth	Arbor	Grind	Kerf	Rake	Application
CF-15254A	6"	54	1/2"	TCG	.063"	0	For aluminum cutting on 6" cordless saws.
CF-16560A	6-1/2"	60	5/8"	TCG	.079"	0	For aluminum cutting on 6-1/2" cordless saws.

*Also for cutting laminated flooring such as Pergo®



Pro Series for Non-Ferrous Metals

TENRYU'S superior quality line for extra heavy duty applications in non-ferrous metals, such as, aluminum, brass, bronze, copper, etc.

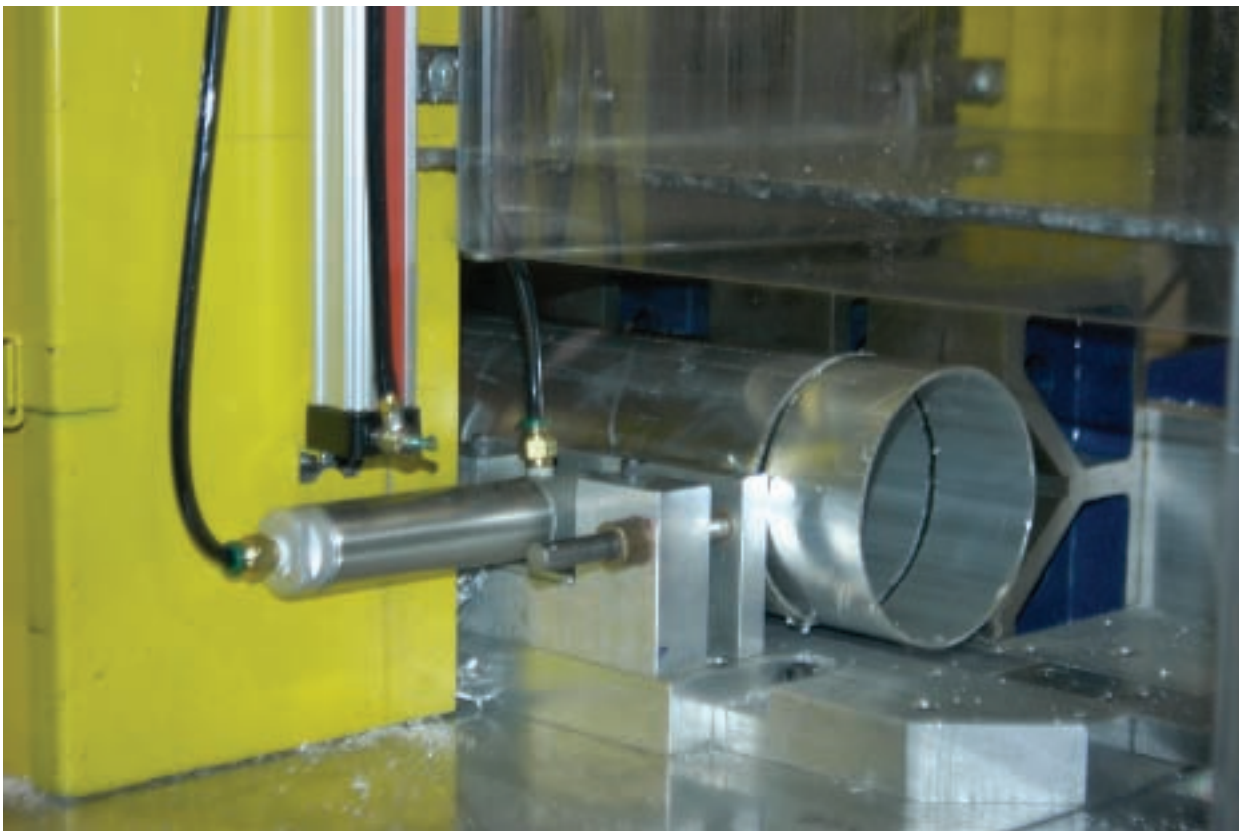
Another of our "Cadillac/Mercedes" grade blades.

EACH BLADE FEATURES:

- Heavier, laser cut, fully-hardened blade bodies stay flatter and truer longer.
- Top-quality, fine-grain, premium grade carbide tips for smoother cuts and longer life.
- Tips are fine-finish honed on all surfaces down to 600 grit.

Pro Series for Non-Ferrous Metals

Model #	Dia	Teeth	Arbor	Grind	Kerf	Rake	Application
PRA-18560D	7-1/4"	60	5/8"	TCG	.110"	0	Our top of the line 7-1/4" blade for non-ferrous. Also cuts plastics.
PRA-21660DN	8-1/2"	60	5/8"	TCG	.110"	-5	For industrial non-ferrous applications. Pro Series.
PRA-25580DN	10"	80	5/8"	TCG	.126"	-5	Pro Series for aluminum. Industrial quality non-ferrous saw blade.
PRA-255100DN	10"	100	5/8"	TCG	.102"	-5	Especially for thin-wall extrusions and use on slide-miter saws.
PRA-305100DN	12"	100	1"	TCG	.134"	-5	Outstanding performance in non-ferrous metals. Best quality.
PRA-305100DN2	12"	100	5/8"	TCG	.134"	-5	For double miter saws and radial arm saws for non-ferrous.
PRA-355100DN	14"	100	1"	TCG	.134"	-5	For cutting non-ferrous metals on your 14" saw. Pro Series



Helpful Cutting Tip: Apply stick wax, bee's wax, or other lubricant to carbide tip area frequently to prevent chip build-up in blade gullets or galling of the non-ferrous metal to the surfaces of the carbide tips.

Steel-Pro® Series



TENRYU's steel cutting carbide tipped saw blades give INDUSTRIAL PERFORMANCE



There may be other brands out there, but experience tells us that TENRYU is the one that industry turns back to for the most reliable, consistent quality.

Cut ferrous metals (**mild steel**) faster, cleaner and easier. Save time, money, the environment, and your respiratory health.

TENRYU'S complete series of steel cutting saw blades called "Steel-Pro®" makes light work out of all kinds of mild steel: steel studs, steel sheet, steel pipe, channel, threaded rod and much, much more.

Specially formulated C-6 carbide grade, combined with our unique tip design, resists breakage on impact and lasts longer, much longer than standard carbides or abrasive discs. Special tooth geometry with "inserted" tooth design greatly improves security of the tip, efficiency and durability.

Abrasive discs throw sparks and lots of dust including unhealthful fiberglass. You shouldn't be breathing it in! Steel-Pro® blades reduce spark production and eliminate abrasive wheel dust.

Abrasive discs wear quickly, requiring frequent blade changes. Steel-Pro® blades allow you to keep working; eliminating down time for frequent blade changes. In addition, Steel-Pro® cuts 5 to 10 times faster than abrasives. Typically, one Steel-Pro® blade will outlast somewhere between 15 to 30 abrasive blades. Think of all that non-productive "down time".

Abrasive discs leave a sharp burr at the cutting edge that must be removed later. Steel-Pro® blades cut clean; eliminating this extremely time-consuming after-cut process. "Time is money". Steel-Pro® saves you BOTH!

EACH BLADE FEATURES:

- Rugged plates and specially formulated carbide tips with a special tooth grind for fast, clean cuts.
- High quality cuts without the clouds of dust and scorch marks associated with friction blades.
- Cool cuts that leave the work piece edge free of burrs.
- Reduced cost-per-cut and maximized performance for the operator as a result of fewer blade changes.

Please note all safety instructions before use and adhere to instructions for maximum RPM speeds.

Steel-Pro® Series For Cordless Saws, see also Cord-Free for mild steel - page 6

Model #	Dia	Teeth	Arbor	Grind	Kerf	Rake	Application
PRF-15238	6"	38	1/2"	MTCG	.079"	0	For cordless or corded saws.
PRF-16048	6-1/4"	48	5/8"	MTCG	.079"	0	For cordless or corded saws.
PRF-18538BW	7-1/4"	38	5/8"KO	ATB	.079"	0	Our Steel-Pro for cutting ferrous metal up to 1/4" thick.
PRF-18538BW2	7-1/4"	38	20mm	MTCG	.079"	0	Mild steel up to 1/4" thick. Fits Jancy, Evolution® Saw.
PRF-18548BW	7-1/4"	48	5/8"KO	ATB	.079"	0	Our most popular Steel-Pro. Cuts thick (up to 1/8") and thin.
PRF-18548BW2	7-1/4"	48	20mm	ATB	.079"	0	Mild steel up to 1/8" thick. Fits Jancy, Evolution® Saw.
PRF-18556CB	7-1/4"	56	5/8"KO	ATAF	.071"	-10	Additional carbide tips for smoother cutting of thin materials
PRF-18570CBN	7-1/4"	70	5/8"KO	ATB	.069"	-10	For very thin steel. (Steel sheet, corrugated steel sheet etc.)
PRF-18570BW2	7-1/4"	70	20mm	ATB	.069"	-10	For very thin steel. (Steel sheet, corrugated steel sheet etc.)
PRF-20348CBN	8"	48	5/8"	MTCG	.087"	0	For ferrous metal cutting. Genral application.
PRF-21048BW	8-1/4"	48	5/8"KO	MTCG	.087"	0	The 8-1/4" Steel-Pro for ferrous metal cutting with circular saws.
PRF-23048CBN	9"	48	1"	ATB	.087"	0	For up to 1/8" thick steel on the Evolution Saw
PRF-25550D	10"	50	1", 5/8"	TCG	.098"	0	For 10" circular saws and low RPM saws for ferrous metal.
PRF-30560D*	12"	60	1"	TCG	.098"	0	For cutting mild steel on low RPM dry cut saws.
PRF-35572D*	14"	72	1"	TCG	.094"	0	For use on dry-cut low RPM saws for cutting mild steel.
PRF-40580D*	16"	80	1"	TCG	.102"	0	For use on low RPM saws for cutting mild steel.

* These blades are for use on low RPM "dry-cut" chop saws only.

ALWAYS WEAR EYE PROTECTION that meets ANSI Z87.1 requirements and PROPERLY FUNCTIONING UPPER and LOWER BLADE GUARDS.

Steel-Pro® SELECT Series

The Steel-Pro® Select is TENRYU'S 2nd generation of mild steel cutting carbide tipped saw blades...Quieter!

These blades are designed to cut mild steel as STEEL-PRO® blades do, but cut quieter than STEEL-PRO® and last longer as well.

EACH BLADE FEATURES:

- Exclusive, two-ply plate design for self dampening and low noise operation.
- Individually hammer-tensioned steel plates for true run.
- Tough C-6 carbide for impact resistance and long cutting life.
- Unique tip design and geometry for smoother and easier cuts.
- Inserted teeth with chip limiting steel support for added durability and safety.

Steel-Pro® Select blades, when used for the proper application, will save lots of time and can outlast abrasive discs up to 30 to 1.

Please note all safety instructions before use and adhere to instructions for maximum rpm speeds.

Steel-Pro® Select Series

Model #	Dia	Teeth	Arbor	Grind	Kerf	Rake	Application
PRF-18538DS	7-1/4"	38	5/8"KO	TCG	.079"	0	Steel-Pro Select for ferrous metal up to 1/4" thick.
PRF-18548DS	7-1/4"	48	5/8"KO	TCG	.079"	0	Steel-Pro Select for ferrous metal up to 1/8" thick.
PRF-25550DS	10"	50	1", 5/8"	TCG	.091"	0	Steel-Pro Select for quiet cuts in mild steel.
PRF-30560DS*	12"	60	1"	TCG	.094"	0	Steel-Pro Select for low vibration cuts and less noise in mild steel.
PRF-30580BWS*	12"	80	1"	MTCG	.091"	-5	Steel-Pro Select for low vibration cuts and less noise in mild steel (more teeth for cutting thin stock).
PRF-35572DS*	14"	72	1"	TCG	.094"	0	Steel-Pro Select for low vibration cuts and less noise in mild steel.
PRF-35590BWS*	14"	90	1"	MTCG	.091"	-5	Steel-Pro Select for low vibration cuts and less noise in mild steel (more teeth for cutting thin stock).

*These blades are for use on low RPM "dry-cut" chop saws only.

Steel-Pro® PLUS Series

The Steel-Pro® Plus is the newest addition to our Steel-Pro® line. It is made especially for use with lower RPM saws such as WORM DRIVE SAWS to cut a wide variety of mild steel materials with:

- **Longer life than standard Steel-Pro® blades**
- **Fewer blade changes**
- **No dust clouds**
- **Reduced sparking**
- **Less noise**
- **Less burr on edges**

EACH BLADE FEATURES:

- **New Cermet (ceramic-metal) tips** for greater impact resistance and longer cutting life.
- Individually Hammer-tensioned steel plates for true run.
- Unique tooth design and geometry for smoother and easier cuts.
- Inserted teeth with chip limiting steel support for added durability and safety.

Steel-Pro Plus is particularly effective for cutting thicker, solid stock and higher tensile all-thread rod.

These blades, when used for the proper application, will save much time and outlast abrasive discs up to 60 to 1.

Please note all safety instructions before use and adhere to instructions for maximum RPM speeds.

Steel-Pro® PLUS Series

Model #	Dia	Teeth	Arbor	Grind	Kerf	Rake	Application
PRF-18536CBNP	7-1/4"	36	Diamond	ATB	.074"	0	Best when used on worm drive type saws or dedicated, low RPM, steel-cutting saws.
PRF-18536CBNP2	7-1/4"	36	20mm	MTCG	.074"	0	Fits Jancy/Evolution saws.

ALWAYS WEAR EYE PROTECTION that meets ANSI Z87.1 requirements and PROPERLY FUNCTIONING UPPER and LOWER BLADES GUARD

Steel-Pro STABILIZER Series



TENRYU establishes an even higher standard of steel-cutting excellence! TENRYU has raised the bar once again in the portable saw, steel-cutting industry!

Virtually all test monitors recognized better longevity of the blade. This new, "STABILIZER" technology stabilizes the blade in the cut with much less vibration during operation. Cleaner cuts, longer life and more a comfortable feeling are great benefits of "STABILIZER", making it more "user-friendly".

TENRYU blades do not require blade plate stabilizers, as is commonly known in the market. In fact, the patent pending design technology of our new "STABILIZER" blade eliminates any need for a blade stabilizer and produces an even more effective job!

EACH BLADE FEATURES:

Newly invented "STABILIZER" plate (Pat. Pend.) improves the cutting performance

- *Better straightness of cut
- *Cleaner cuts
- *Longer cutting life
- *Reduced Burring
- *Reduced scattering of steel debris
- *Less vibration

Model #	Dia	Teeth	Arbor	Grind	Kerf	Rake	Application
PRF-18536BWK	7-1/4"	36	5/8"KO	MTCG	.079"	0	Mild Steel. 1/8" to 1/4" thickness.
PRF-18536BWK2	7-1/4"	36	20mm	MTCG	.079"	0	Mild Steel. 1/8" to 1/4" thickness. Fits 7, 7-1/4" and 7-1/2" Saws.
PRF-18548BWK	7-1/4"	48	5/8"KO	MTCG	.079"	0	Mild Steel. Up to 1/8" Thickness.
PRF-18548BWK2	7-1/4"	48	20mm	MTCG	.079"	0	Mild Steel. Up to 1/8" thickness. Fits 7, 7-1/4" and 7-1/2" Saws.
PRF-20348BWK	8"	48	5/8"KO	MTCG	.087"	0	Mild Steel. Up to 1/8" Thickness.
PRF-21048BWK	8-1/4"	48	5/8"KO	MTCG	.079"	0	Mild Steel. Up to 1/8" Thickness.
PRF-23048BWK	9"	48	1"	MTCG	.087"	0	Mild Steel. Up to 1/8" Thickness.
PRF-30560DK	12"	60	1"	TCG	.098"	0	For 12" Dry Cutter (Low RPM).
PRF-35572DK	14"	72	1"	TCG	.098"	0	For 12" Dry Cutter (Low RPM).



Steel-Pro for STAINLESS Series

Now it is possible to cut stainless steel with greater efficiency on your low RPM metal-cutting saw

The Steel-Pro® for Stainless Series is the result of nearly two years of intensive product testing. Never before has cutting stainless steel been so easy and cost effective. The TENRYU Steel-Pro® for Stainless blades allow you to cut a wide variety of stainless steel materials with:

- GREATLY IMPROVED CUTTING SPEED
- LESS BURR ON EDGES (resulting in tremendous time savings)
- NO SCORCHING OF THE STAINLESS
- REDUCED SPARKING
- LONGER LIFE THAN THE COMPETITION'S BLADES!
- FEWER BLADE CHANGES

EACH BLADE FEATURES:

- Individually hand-hammer tensioned steel plates for true run.
- Unique tooth design and geometry for smoother and easier cuts.
- Inserted teeth with chip limiting steel support for added durability and safety.
- New grade of carbide for longer cutting life in stainless steel.
- Resin bond-filled laser expansion slots for reduced vibration.

These blades, when used for the proper application, will save time and money.

Please note all safety instructions before use and adhere to instructions for maximum RPM speeds.

STEEL-PRO® for STAINLESS SERIES

Model #	Dia	Teeth	Arbor	Grind	Kerf	Rake	Application
SPS-30578	12"	78	1"	M-TCG	.087"	10	For cutting stainless steel on 12" dry cut saws.
SPS-35590	14"	90	1"	M-TCG	.087"	10	For cutting stainless steel on 14" dry cut saws.

Be advised that various grades of stainless steel vary greatly in their ability to be cut with current technology. Tenryu's Steel-Pro for Stainless blades are recommended for cutting the most common grades of stainless steel, including 303 & 304, using dry cut machines. Other grades of stainless materials are very difficult to cut effectively using dry cut machines. However, due to the fact that Steel-Pro for stainless cuts so quickly and without time consuming de-burring, compared with former cutting methods. TIME and OVERALL SAVINGS are VERY SIGNIFICANT when cutting 303 & 304 stainless. Also, scorching of the material being cut is avoided. You win all around!



Industrial Blade Series



Tenryu's European industrial quality line for heavy duty applications.

EACH BLADE FEATURES:

- Select grade of carbide tip for better performance.
- Large European style tips.
- Heavy, European plate style resists deflection during cutting.
- Resin bond, laser slots to absorb and eliminate vibration to produce a cleaner, quieter, more efficient cut
- Excellent blade life.

INDUSTRIAL BLADE SERIES for SLIDING TABLE SAWS/VERTICAL PANEL SAWS

Ripping

Model#	Dia.	Teeth	Arbor	Grind	Kerf	Rake	Application
IW-30028CBD3	300	28	30mm	ATB	.128"	25	Ripping wood on sliding table saw
IW-35032CBD3	350	32	30mm	ATB	.136"	25	Ripping wood on sliding table saw

Cross Cuts

Model#	Dia.	Teeth	Arbor	Grind	Kerf	Rake	Application
IW-25080AB3	250	80	30mm	ATAFR	.128"	10	Finish cross cuts in veneer plywood
IW-300100AB3	300	100	30mm	ATAFR	.128"	10	Finish cross cuts in veneer plywood
IW-350100AB3	350	100	30mm	ATAFR	.136"	10	Finish cross cuts in veneer plywood
IW-25080ABD3	250	80	30mm	ATBR	.128"	15	Finish cross cuts in solid wood
IW-300100ABD3	300	100	30mm	ATBR	.128"	15	Finish cross cuts in solid wood
IW-350100ABD3	350	100	30mm	ATBR	.136"	15	Finish cross cuts in solid wood

Combination (Rip or Cross-cut)

Model#	Dia.	Teeth	Arbor	Grind	Kerf	Rake	Application
IW-25040CBD3	250	40	30mm	ATB	.128"	20	Combination, rip & cross cuts in wood
IW-30050CBD3	300	50	30mm	ATB	.128"	20	Combination, rip & cross cuts in wood
IW-35060CBD3	350	60	30mm	ATB	.136"	20	Combination, rip & cross cuts in wood

Melamine

Model#	Dia.	Teeth	Arbor	Grind	Kerf	Rake	Application
IL-25050YHB3	250	50	30mm	Hollow	.128"	10	Finish cuts in Melamine, Hollow Grind
IL-30060YHB3	300	60	30mm	Hollow	.128"	10	Finish cuts in Melamine, Hollow Grind
IL-30060YHB3N	300	60	30mm	Hollow	.128"	-5	Finish cuts in Melamine, Hollow Grind

Composite Man-made board materials including plywood

Model#	Dia.	Teeth	Arbor	Grind	Kerf	Rake	Application
IW-25080D3	250	80	30mm	TCG	.128"	10	Designed for composite materials, plywood, etc.
IW-300100D3	300	100	30mm	TCG	.128"	10	Designed for composite materials, plywood, etc.
IW-350100D3	350	100	30mm	TCG	.136"	10	Designed for composite materials, plywood, etc.



Industrial Blade Series **T M R**

Tenry's European industrial quality line for heavy duty applications.

EACH BLADE FEATURES:

- Select grade of carbide tip for better performance.
- Large European style tips.
- Heavy, European plate style resists deflection during cutting.
- Resin bond, laser slots to absorb and eliminate vibration to produce a cleaner, quieter, more efficient cut
- Excellent blade life.

INDUSTRIAL BLADE SERIES for MITER SAW – Wood

Model#	Dia.	Teeth	Arbor	Grind	Kerf	Plate	Rake	Application
IW-25540CB1	10"	40	5/8"	ATAF	.091"	.071"	5	General applications in wood with Miter Saw
IW-25560CB1	10"	60	5/8"	ATAF	.091"	.071"	5	Smooth cuts in wood with Miter Saw
IW-25580CB1	10"	80	5/8"	ATAF	.091"	.071"	5	Finish cuts in wood with Miter Saw
IW-30540CB2	12"	40	1"	ATAF	.094"	.071"	5	General applications in wood with Miter Saw
IW-30560CB2	12"	60	1"	ATAF	.094"	.071"	5	Smooth cuts in wood with Miter Saw
IW-30580CB2	12"	80	1"	ATAF	.094"	.071"	5	Finish cuts in wood with Miter Saw

INDUSTRIAL BLADE SERIES for RADIAL ARM SAW or MITER SAW – Wood

Model#	Dia.	Teeth	Arbor	Grind	Kerf	Plate	Rake	Application
IW-25540AB1	10"	40	5/8"	ATBR	.110"	.079"	-3	General applications in wood with Radial Arm/Miter Saw
IW-30550AB2	12"	50	1"	ATBR	.110"	.079"	-3	General applications in wood with Radial Arm/Miter Saw
IW-35560AB2	14"	60	1"	ATBR	.118"	.087"	-3	General applications in wood with Radial Arm/Miter Saw
IW-38060AB2	15"	60	1"	ATBR	.118"	.087"	-3	General applications in wood with Radial Arm/Miter Saw

INDUSTRIAL BLADE SERIES for DOUBLE MITER SAW – Wood

Model#	Dia.	Teeth	Arbor	Grind	Kerf	Plate	Rake	Application
IW-30590AB1	12"	90	5/8"	ATBR	.118"	.087"	-3	Picture Framing in wood with Double Miter Saw
IW-355110AB1	14"	110	5/8"	ATBR	.118"	.087"	-3	Picture Framing in wood with Double Miter Saw

INDUSTRIAL BLADE SERIES for MITER SAW or TABLE SAW – Solid Surface

Model#	Dia.	Teeth	Arbor	Grind	Kerf	Plate	Rake	Application
IS-25560D1	10"	60	5/8"	TCG	.102"	.079"	-5	Smooth cuts in solid surface with Table/Miter Saw
IS-30580D2	12"	80	1"	TCG	.110"	.087"	-5	Smooth cuts in solid surface with Table/Miter Saw

INDUSTRIAL BLADE SERIES for TABLE SAW – Wood

Model#	Dia.	Teeth	Arbor	Grind	Kerf	Plate	Rake	Application
IW-25524CBD1	10"	24	5/8"	ATB	.126"	.087"	20	Ripping wood with Table Saw
IW-30528CBD2	12"	28	1"	ATB	.126"	.087"	20	Ripping wood with Table Saw
IW-35532CBD2	14"	32	1"	ATB	.138"	.098"	20	Ripping wood with Table Saw
IW-25540CBD1	10"	40	5/8"	ATB	.118"	.079"	10	General applications in wood with Table Saw
IW-25560CBD1	10"	60	5/8"	ATB	.118"	.079"	10	Smooth cuts in wood with Table Saw
IW-25540D1	10"	40	5/8"	TCG	.118"	.079"	10	General applications in wood with Table Saw
IW-25560D1	10"	60	5/8"	TCG	.118"	.079"	10	Smooth cuts in wood with Table Saw

INDUSTRIAL BLADE SERIES for TABLE SAW – Melamine

Model#	Dia.	Teeth	Arbor	Grind	Kerf	Plate	Rake	Application
IL-25580H1	10"	80	5/8"	HATB	.118"	.087"	-5	Finish cuts in Melamine with Table Saw
IL-305100H2	12"	100	1"	HATB	.118"	.087"	-5	Finish cuts in Melamine with Table Saw

INDUSTRIAL BLADE SERIES for TABLE SAW – Wood (Glue Line Ripping)

Model#	Dia.	Teeth	Arbor	Grind	Kerf	Plate	Rake	Application
IW-25530D1	10"	30	5/8"	TCG	.142"	.094"	20	Glue line ripping in wood with Table Saw
IW-30536D2	12"	36	1"	TCG	.157"	.110"	20	Glue line ripping in wood with Table Saw
IW-35540D2	14"	40	1"	TCG	.157"	.110"	20	Glue line ripping in wood with Table Saw

INDUSTRIAL BLADE SERIES for STRAIGHT LINE RIP SAW – Wood

Model#	Dia.	Teeth	Arbor	Grind	Kerf	Plate	Rake	Application
IW-30550AB2A	12"	50	1"	ATAFR	.118"	.087"	20	Ripping wood with Straight Line Rip Saw

Diamond-Pro Series 

High quality DIAMOND grit blades for general construction applications using saws or grinders.



TENRYU may well be the only saw blade manufacturer that actually manufactures **top-quality** DIAMOND blades, as well as, carbide tipped blades. Our abilities are represented here in a small assortment of blades aimed at general construction applications.

These blades include premium, industrial quality blades, as well as, contractor grade blades that will satisfy the most demanding user. Each blade in this series consists of top quality diamond grit sintered to our carefully crafted saw plates. The bond used is suitable for work in concrete, stone, and other masonry products. Our best, industrial quality diamond blades are gold colored. Typically, our lower-priced, contractor diamond blades are silver colored.

Diamond-Pro Series

Model #	Dia	Color	Arbor	Type	Max/RPM	Kerf	Application
DA-105T-SL	4-1/8"	Silver	20mm	TURBO	14500	.073"	For general construction applications.
DA-105T-SL2	4-1/8"	Silver	7/8"	TURBO	14500	.073"	For general construction applications.
DA-105T-GL	4-1/8"	Gold	20mm	TURBO	14500	.073"	For general construction applications.
DA-105T-GL2	4-1/8"	Gold	7/8"	TURBO	14500	.073"	For general construction applications.
DA-105S-SL	4-1/8"	Silver	20mm	SEGMENT	14500	.067"	For general construction applications.
DA-105S-SL2	4-1/8"	Silver	7/8"	SEGMENT	14500	.067"	For general construction applications.
DA-105S-GL	4-1/8"	Gold	20mm	SEGMENT	14500	.067"	For general construction applications.
DA-105S-GL2	4-1/8"	Gold	7/8"	SEGMENT	14500	.067"	For general construction applications.
DA-110R-SL	4-3/8"	Silver	7/8"	Continuous Rim	13800	.059"	Tile (wet cutting)
DA-110S-SL	4-3/8"	Silver	7/8"	SEGMENT	13800	.067"	For general construction applications.
DA-125T-SL	5"	Silver	7/8"	TURBO	12200	.085"	For general construction applications.
DA-125S-SL	5"	Silver	7/8"	SEGMENT	12200	.079"	For general construction applications.
DA-180T-GL	7-1/8"	Gold	5/8"KO	TURBO	8400	.079"	For general construction applications.
DA-185S-SL	7-1/4"	Silver	5/8"KO	SEGMENT	8300	.079"	For general construction applications.
DA-305T-SL	12"	Silver	1"	TURBO	TBD	TBD	For general construction applications.

*Most blades are packaged with an arbor adaptor bushing to allow the blade to fit on other size saw or grinder spindles.

Cord-Free Diamond Blade - Designed specifically for use on cordless saws

Model #	Dia	Teeth	Arbor	Kerf	Application
CF-085D	3-3/8"	RIM	15mm	N/A	For glass & fiberglass cutting on cordless saws. Makita & B&D

ALWAYS WEAR EYE PROTECTION that meets ANSI Z87.1 requirements and PROPERLY FUNCTIONING BLADE/WHEEL GUARD

INTRODUCING
TSD Series
TENRYU
SUPER
DIAMOND



TSD is a new line of products representing a revolution in diamond tooling technology. TENRYU has developed a new method of fusing coarse, polycrystalline diamond particles to various shaped tool steels. As a result, very fast cutting rates and longer, effective cutting life is attained.

Currently, this technology is available on a 4" Depressed Center Cup Wheel for grinding applications using 4-1/2", 5" or 7" right angle grinders.

Also available are 7", 12" and 14" saw blades (also referred to as **Type S-1** wheels). They fit on circular saws, chop saws, and even gas-engine rescue-type saws.

TSD was originally developed to cut and grind cast-iron and ductile iron materials. Through further refinement it was discovered that fast, efficient cutting and grinding of a multitude of other materials is possible. That includes limited applications in mild steel, brick, granite, marble and other natural stones, ceramic materials, solid-surface materials, fiber reinforced plastics and a variety of masonry materials.

TSD (TENRYU SUPER DIAMOND)- Depressed Center, Cup Wheel

FAST GRINDING of cast iron, ductile iron, and limited applications in steel, granite, marble and other natural stones, ceramic materials, solid-surface materials, fiber reinforced plastics, brick and a variety of masonry products.

Until now, standard diamond grinding wheels were the only choice for stone workers. They were expensive, cut rather slowly, and wore quickly when used heavily.

The TSD (TENRYU Super Diamond) removes material very rapidly and will last longer than conventional diamond tooling.

Curved outer edge makes it easier to grind the insides of holes, concave and curved shaped surfaces.

Model #	Dia	Color	Arbor
TSD-105C	4"	Gold	7/8"

TSD (TENRYU SUPER DIAMOND) - Cutoff Blades

FAST CUTTING of a wide variety of materials on portable, chop and gas-engine rescue or construction type saws.

Quickly cuts cast iron, ductile iron, and limited application in steel, sheet metal, car bodies, refractory brick, masonry materials and much, much more.

Model #	Dia	Color	Arbor	Kerf
TSD-180D	7"	Gold	5/8"KO	.089"
TSD-305D	12"	Gold	1"+Bsg.	.138"
TSD-305D2	12"	Gold	20mm	.138"
TSD-355D	14"	Gold	1"+Bsg	.132"
TSD-355D2	14"	Gold	20mm	.132"

Rescue Blades

The **RESCUE BLADE** series is a high quality line of carbide tipped blades for cutting most building materials including roofing and most non-ferrous metals. Designed for heavy-duty demolition and for use by fire departments in fire fighting operations, these blades are excellent for use in pallet breaking and floor removal.

EACH BLADE FEATURES:

- Individually hammer-tensioned steel plates for true run.
- Specially selected, extremely tough grade of carbide for excellent work in a variety of materials.
- Tooth geometry selected for effective cutting under high-impact conditions.

ALWAYS WEAR EYE PROTECTION THAT MEETS ANSI Z87.1 REQUIREMENTS AND USE PROPERLY FUNCTIONING UPPER AND LOWER BLADE GUARD
PLEASE BE AWARE OF SAFETY ISSUES WHEN OPERATING GAS POWERED SAW MACHINES.

STRICTLY FOLLOW SAW MANUFACTURER'S SAFETY INSTRUCTIONS AND WARNINGS

Rescue Blade Series - See Also TSD Series page 28

Model #	Dia	Teeth	Arbor	Grind	Kerf	Rake	Application
PT-30512	12"	12	1"	FTG	.134"	-8	For use by rescue squads & fire dept. Faster cuts in wood materials, non-ferrous & sheet metal.
PT-30524	12"	24	1"	FTG	.134"	-8	For use by rescue squads & fire dept. Fast cuts in wood materials, non-ferrous & sheet metal.
PT-30524A	12"	24	20mm	FTG	.142"	-8	Rescue saw, 20mm arbor. Fast cuts in wood materials, non-ferrous & sheet metal.
PT-35514	14"	14	1"	FTG	.142"	-8	For use by rescue squads & fire dept. Fast cuts in wood materials, non-ferrous & sheet metal.
PT-35524	14"	24	1"	FTG	.142"	-8	For use by rescue squads & fire dept. Fast cuts in wood materials, non-ferrous & sheet metal.

*Includes 7/8" and 20mm arbor adaptor bushings.

Brush Cutter Series



Brush Cutter

Designed for gas powered brush cutting machines

The Brush Cutter series is a high quality line of carbide tipped blades for cutting brush, saplings and thick grasses with gas powered, brushcutter/weed trimmer machines.

Designed for professional use by land clearing teams and landscapers; these blades are LONG LASTING and FAST CUTTING. They eliminate the need for wasteful and inefficient nylon string and far outlast conventional steel blades or plastic blades.

EACH BLADE FEATURES:

- Individually hammer-tensioned steel plates for true run.
- Specially designed inserted tooth for excellent tip retention.
- Tooth geometry and carbide hardness selected for effective cutting under high-impact conditions.

Always use proper blade guard. Always wear eye protection that meets ANSI Z87.1 requirements & a face shield wherever possible.
Please be aware of SAFETY issues when operating gas powered saw machines.
Strictly follow tool manufacturer's safety instructions and warnings

BRUSH CUTTER SERIES

Model #	Dia	Teeth	Arbor	Grind	Kerf	Rake	Application
GR-23032	9"	32	1"	ATB	.089"	5	For cutting thick brush on a gas weed whacker or trimmer.
GR-25536	10"	36	1"	ATB	.089"	5	For cutting thick brush on a gas weed whacker or trimmer.

Reference by machine

NOTE:

See "Reference by Diameter" section (pg 36-40) to locate blade details in the earlier text of this catalog.

Biscuit Joiners

DIA	MODEL NO.	#T	ARBOR	GRIND	RAKE	KERF	RPM
4"	PT-10006-1	6	22mm	FTG	20	.157	11000
4"	PT-10006-2	6	22mm	ATAFR	25/-15	.157	11000

Brush Cutters

9"	GR-23032	32	1"	ATAF	5	.089	10000
10"	GR-25536	36	1"	ATAF	5	.089	10000

Circular Saws

DIA	MODEL NO.	#T	ARBOR	GRIND	RAKE	KERF	RPM
7"	TSD-180D	N/A	5/8"KO	TSD	N/A	.089	8300
7-1/4"	AC-18560D	60	5/8"KO	TCG	0	.079	8300
7-1/4"	BP-18505	5	5/8" KO	FTG	12	.091	8300
7-1/4"	BP-18524	24	5/8"KO	ATAF	10	.075	8300
7-1/4"	PC-18560CB	60	5/8"KO	ATAF	5	.079	8300
7-1/4"	PRA-18560D	60	5/8"	TCG	0	.110	8300
7-1/4"	PRF-18536BWK	36	5/8"	MTCG	0	.079	8300
7-1/4"	PRF-18536BWK2	36	20mm	MTCG	0	.079	8300
7-1/4"	PRF-18536CBNP	36	Dia only	ATB	0	.075	8300
7-1/4"	PRF-18536CBNP2	36	20mm	ATB	0	.075	8300
7-1/4"	PRF-18538BW	38	5/8"KO	ATB	0	.079	5800
7-1/4"	PRF-18538BW2	38	20mm	ATB	0	.079	5800
7-1/4"	PRF-18538DS	38	5/8"KO	TCG	0	.079	5800
7-1/4"	PRF-18548BW	48	5/8"KO	ATB	0	.079	5800
7-1/4"	PRF-18548BW2	48	20mm	ATB	0	.079	5800
7-1/4"	PRF-18548BWK	48	5/8"KO	MTCG	0	.079	5800
7-1/4"	PRF-18548BWK2	48	20mm	MTCG	0	.079	5800
7-1/4"	PRF-18548DS	48	5/8"KO	TCG	0	.079	5800
7-1/4"	PRF-18556CB	56	5/8"KO	ATAF	-10	.071	5800
7-1/4"	PRF-18570BW2	70	20mm	ATB	-10	.069	5800
7-1/4"	PRF-18570CBN	70	5/8"KO	ATB	-10	.069	5800
7-1/4"	PRS-18540	40	5/8" KO	TCG	-5	.094	5800
7-1/4"	PT-18516B	16	5/8"KO	ATB	27	.073	8300
7-1/4"	PT-18520B	20	5/8"KO	ATB	27	.073	8300
7-1/4"	PT-18524AM	24	5/8"KO	ATB	20	.070	8300
7-1/4"	PT-18524-P	24	5/8"KO	ATB	20	.070	8300
7-1/4"	PT-18524V	24	5/8"KO	ATB	20	.070	8300
7-1/4"	PT-18540	40	5/8"KO	ATB	27	.073	8300
7-1/4"	PT-18540CB	40	5/8"KO	ATAF	12	.073	8300
7-1/4"	PT-18540-T	40	5/8"KO	ATB	18	.063	8300
7-1/4"	PT-18552-T	52	5/8"KO	ATAF	18	.063	8300
7-1/4"	SL-18552	52	5/8"KO	ATAF	18	.063	8300
8"	PRF-20348BWK	48	5/8"	MTCG	0	.087	3700
8"	PRF-20348CBN	48	5/8"	MTCG	0	.087	3700
8-1/4"	AC-21060DN	60	5/8"KO	TCG	-5	.087	7300
8-1/4"	ML-21080AB	80	5/8"	ATAFR	0	.110	7300
8-1/4"	PRF-21048BW	48	5/8"KO	MTCG	0	.087	5800
8-1/4"	PRF-21048BWK	48	5/8"KO	MTCG	0	.079	5800
8-1/4"	PT-21018	18	5/8"KO	ATB	25	.075	7300
8-1/4"	PT-21040	40	5/8"KO	ATB	15	.079	7300
8-1/4"	PT-21060	60	5/8"KO	ATAF	12	.079	7300
9"	PRF-23048BWK	48	1"	MTCG	0	.087	2700

Circular Saws Continued

DIA	MODEL NO.	#T	ARBOR	GRIND	RAKE	KERF	RPM
9"	PRF-23048CBN	48	1"	ATB	0	.087	2700
10"	BP-25506	6	5/8"	FTG	8	.098	5870
10"	PRF-25550D	50	1", 5/8"	TCG	0	.098	1900
10"	PRF-25550DS	50	1", 5/8"	TCG	0	.098	1900
10-1/4"	PT-26036	36	5/8"KO	ATAF	20	.079	5870

Corded Trim Saws

4"	AC-10036	36	20mm	ATB	10	.055	11000
4"	PC-10036	36	20mm	ATAF	10	.055	11000
4"	PT-10024	24	20mm	ATAF	18	.055	11000
4-3/8"	PT-11036	36	20mm	ATAF	15	.063	13800
4-1/2"	PT-11536	36	3/8"	ATAF	15	.063	13200
5-1/2"	PT-14036	36	5/8", 1/2"	ATAF	15	.063	10800
6"	PRF-15238	38	1/2"	MTCG	0	.079	9500
6"	PT-15236	36	1/2"	ATAF	15	.063	9500
6-1/2"	PT-16524	24	5/8"KO	ATB	20	.079	9250
6-1/2"	PT-16524-T	24	5/8" KO	ATAF	20	.059	9250
6-1/2"	PT-16540	40	5/8" KO	ATB	20	.079	9250
6-1/2"	PT-16540-T	40	5/8" KO	ATB	18	.063	9250
6-1/2"	PT-16552-T	52	5/8" KO	ATAF	18	.063	9250
6-1/2"	SL-16552	52	5/8"KO	ATAF	18	.063	9250

Cordless Saws

3-3/8"	CF-08520	20	15mm	ATB	10	.039	2240
3-3/8"	CF-085D		15mm		Turbo		2240
5-3/8"	CF-13530M	30	10mm	MTCG	0	.059	3200
5-3/8"	CF-13530W	30	10mm	ATAF	20	.047	3200
5-3/8"	CF-13550M	50	10mm	MTCG	0	.055	3200
5-1/2"	CF-14036W	36	10mm	ATAF	15	.063	4200
6"	CF-15218W	18	1/2"	ATAF	15	.063	2600
6"	CF-15236W	36	1/2"	ATAF	15	.063	2600
6"	CF-15238M	38	1/2"	MTCG	0	.063	2600
6"	CF-15254A	54	1/2"	ATB	0	.063	2600
6"	CF-15256P	56	1/2"	ATB	0	.063	2600
6-1/4"	PRF-16048	48	5/8"KO	MTCG	0	.079	2400
6-1/2"	CF-16524W	24	5/8"	ATAF	20	.059	2600
6-1/2"	CF-16540W	40	5/8"	ATAF	20	.059	2600
6-1/2"	CF-16548M	48	5/8"	MTCG	0	.079	2600
6-1/2"	CF-16560A	60	5/8"	ATB	0	.079	2600
6-1/2"	CF-16560P	60	5/8"	ATB	0	.079	2600
6-1/2"	SL-16552	52	5/8"KO	ATAF	18	.063	9250
6-3/4"	CF-17340M	40	20mm	ATB	0	.071	3500

Low RPM Dry Cut (Ferrous Metal)

12"	PRF-30560D	60	1"	TCG	0	.098	2000
12"	PRF-30560DK	60	1"	TCG	0	.098	2000
12"	PRF-30560DS	60	1"	TCG	0	.094	2000
12"	PRF-30580BWS	80	1"	MTCG	0	.094	2000
12"	SPS-30578	78	1"	MTCG	10	.087	1700
14"	PRF-35572D	72	1"	TCG	0	.094	1700

Reference by Machine

NOTE:
See "Reference by Diameter" section (pg 36-40) to locate blade details in the earlier text of this catalog.

continued

Low RPM Dry Cut (Ferrous Metal) cont'd.

DIA	MODEL NO.	#T	ARBOR	GRIND	RAKE	KERF	RPM
14"	PRF-35572DK	72	1"	TCG	0	.098	1700
14"	PRF-35572DS	72	1"	TCG	0	.094	1700
14"	PRF-35590BWS	90	1"	MTCG	0	.094	1700
14"	SPS-35590	90	1"	MTCG	10	.087	1700
16"	PRF-40580D	80	1"	TCG	0	.102	1700

Gas Powered Saws

DIA	MODEL NO.	#T	ARBOR	GRIND	RAKE	KERF	RPM
12"	PT-30512	12	1"+Bushings	FTG	-8	.134	5000
12"	PT-30524	24	1"+Bushings	FTG	-8	.134	5000
12"	PT-30524A	24	20mm	FTG	-8	.134	5000
14"	PT-35514	14	1"+Bushings	FTG	-8	.142	4300
14"	PT-35524	24	1"+Bushings	FTG	-8	.142	4300
12"	TSD-305D		1" + Bushings			TSD Blade	TBD
14"	TSD-355D		1" + Bushings			TSD Blade	TBD
12"	TSD-305D2		20mm			TSD Blade	TBD
14"	TSD-355D2		20mm			TSD Blade	TBD

Jamb Saws

DIA	MODEL NO.	#T	ARBOR	GRIND	RAKE	KERF	RPM
6-1/2"	PT-16540CR	40	BEVEL	ATB	18	.063	5300

Miter Saws

DIA	MODEL NO.	#T	ARBOR	GRIND	RAKE	KERF	RPM
8-1/4"	AC-21060DN	60	5/8"KO	TCG	-5	.087	7300
8-1/2"	AC-21660DN	60	5/8" KO	TCG	-5	.087	7000
8-1/4"	ML-21080AB	80	5/8"	ATAFR	0	.110	7300
8-1/2"	PRA-21660DN	60	5/8"	TCG	-5	.110	7000
8-1/4"	PRF-21048BW	48	5/8"KO	MTCG	0	.087	5800
8-1/4"	PT-21018	18	5/8"KO	ATB	25	.075	7300
8-1/4"	PT-21040	40	5/8"KO	ATB	15	.079	7300
8-1/4"	PT-21060	60	5/8"KO	ATAF	12	.079	7300
8-1/2"	PT-21624	24	5/8"	ATB	15	.087	7000
8-1/2"	PT-21640	40	5/8"	ATB	15	.087	7000
8-1/2"	PT-21660-1	60	5/8"	ATAF	5	.079	7000
8-1/2"	PT-21680	80	5/8"	ATAF	10	.087	7000
8-1/2"	SL-21660	60	5/8"	ATAF	5	.079	7000
9"	PT-23040	40	5/8"	ATAF	5	.087	6400
10"	AC-255100DN	100	5/8"	TCG	-5	.094	5870
10"	AC-25560DN	60	5/8"	TCG	-5	.087	5870
10"	AC-25580DN	80	5/8"	TCG	-5	.094	5870
10"	BP-25506	6	5/8"	FTG	8	.098	5870
10"	BP-25532	32	5/8"	ATAF	5	.091	5870
10"	IS-25560D1	60	5/8"	TCG	-5	.102	5870
10"	IW-25540AB1	40	5/8"	ATBR	-3	.110	5870
10"	IW-25540CB1	40	5/8"	ATAF	5	.091	5870
10"	IW-25560CB1	60	5/8"	ATAF	5	.091	5870
10"	IW-25580CB1	80	5/8"	ATAF	5	.091	5870
10"	MP-255100AB	100	5/8"	ATAFR	-3	.110	5870
10"	MP-25560AB	60	5/8"	ATAFR	-3	.110	5870
10"	MP-25560CB	60	5/8"	ATAF	0	.118	5870
10"	MP-25580AB	80	5/8"	ATAFR	-3	.110	5870

Miter Saws continued

DIA	MODEL NO.	#T	ARBOR	GRIND	RAKE	KERF	RPM
10"	MP-25580CB	80	5/8"	ATAF	0	.118	5870
10"	PC-25580CB	80	5/8"	ATAF	5	.102	5870
10"	PRA-255100DN	100	5/8"	TCG	-5	.102	5870
10"	PRA-25580DN	80	5/8"	TCG	-5	.126	5870
10"	PRP-25580CB	80	5/8"	ATAF	5	.125	5870
10"	PRS-25560	60	5/8"	TCG	-5	.102	5870
10"	PRS-25580	80	5/8"	TCG	-5	.102	5870
10"	PT-25532	32	5/8"	ATAF	5	.091	5870
10"	PT-25540	40	5/8"	ATB	0	.083	5870
10"	PT-25550	50	5/8"	ATAF	15	.091	5870
10"	PT-25560	60	5/8"	ATB	0	.083	5870
10"	PT-25560D	60	5/8"	TCG	10	.087	5870
10"	PT-25572A	72	5/8"	ATB	15	.098	5870
10"	PT-25590	90	5/8"	ATAF	10	.091	5870
10"	SL-25572	72	5/8"	ATAF	10	.110	5870
12"	AC-305100DN	100	1"	TCG	-5	.110	5000
12"	AC-30580DN	80	1"	TCG	-5	.110	5000
12"	BP-30508	8	1"	FTG	8	.098	5000
12"	BP-30540	40	1"	ATAF	5	.091	5000
12"	IS-30580D2	80	1"	TCG	-5	.110	5000
12"	IW-30540CB2	40	1"	ATAF	5	.094	5000
12"	IW-30550AB2	50	1"	ATBR	-3	.110	5000
12"	IW-30560CB2	60	1"	ATAF	5	.094	5000
12"	IW-30580CB2	80	1"	ATAF	5	.094	5000
12"	MP-305100AB	100	1"	ATAFR	-3	.118"	5000
12"	MP-305100AB2	100	5/8"	ATAFR	-3	.118"	5000
12"	MP-305100CB	100	1"	ATAF	0	.126	5000
12"	MP-305100CB2	100	5/8"	ATAF	0	.126	5000
12"	MP-30560AB	60	1"	ATAFR	-3	.118"	5000
12"	MP-30560CB	60	1"	ATAF	-5	.118	5000
12"	MP-30580AB	80	1"	ATAFR	-3	.118"	5000
12"	MP-30580CB	80	1"	ATAF	0	.118	5000
12"	PC-305100CB	100	1"	ATAF	5	.110	5000
12"	PRA-305100DN	100	1"	TCG	-5	.134	5000
12"	PRA-305100DN2	100	5/8"	TCG	-5	.134	5000
12"	PRP-305100CB	100	1"	ATAF	5	.134	5000
12"	PRS-305100	100	1"	TCG	-5	.110	5000
12"	PRS-30580	80	1"	TCG	-5	.110	5000
12"	PT-305100	100	1"	ATAF	5	.094	5000
12"	PT-30560	60	1"	ATAF	3	.094	5000
12"	PT-30580	80	1"	ATAF	5	.094	5000
12"	SL-305100	100	1"	ATAF	5	.091	5000
14"	AC-355100DN	100	1"	TCG	-5	.118	4300
14"	IW-35560AB2	60	1"	ATBR	-3	.118	4300
14"	PRA-355100DN	100	1"	TCG	-5	.134	4300
15"	AC-380100DN	100	1"	TCG	-5	.118	4020
15"	IW-38060AB2	60	1"	ATBR	-3	.118	4020

Reference by Machine

NOTE:

See "Reference by Diameter" section (pg 36-40) to locate blade details in the earlier text of this catalog.

Miter Saws continued

continued

DIA	MODEL NO.	#T	ARBOR	GRIND	RAKE	KERF	RPM
15"	MP-380100AB	100	1"	ATAFR	-3	.126"	4020
15"	MP-380100CB	100	1"	ATAF	0	.126	4020
16"	AC-405120DN	120	1"	TCG	-5	.134	3690
16"	PR-405100CBN	100	1"	ATB	20	.126	3690
16"	PRS-405120	120	1"	TCG	-5	.134	3690
16"	RS-40536CBN	36	1"	ATB	20	.134	3690
16"	RS-40560CB	60	1"	ATAF	15	.126	3690
18"	PRS-455120	120	1"	TCG	-5	.134	3400

Panel Saws/Sliding Table Saws

8"	AC-20360DN	60	5/8"	TCG	-5	.087	7300
8"	PP-20360AB	60	5/8"	ATAFR	0	.110	7300
8"	PRS-20360	60	5/8"	TCG	-5	.094	7300
8"	PT-20360	60	5/8"	ATAF	5	.087	7300
220mm	PP-22060AB	60	30mm	ATAFR	0	.110	6900
220mm	PRS-22064	64	30mm	TCG	-5	.102	6900
250mm	IL-25050YHB3	50	30mm	Hollow	10	.128	5870
250mm	IW-25040CBD3	40	30mm	ATB	20	.128	5870
250mm	IW-25080AB3	80	30mm	ATAFR	10	.128	5870
250mm	IW-25080ABD3	80	30mm	ATBR	15	.128	5870
250mm	IW-25080D3	80	30mm	TCG	10	.128	5870
300mm	IL-30060YHB3	60	30mm	Hollow	10	.128	5000
300mm	IL-30060YHB3N	60	30mm	Hollow	-5	.128	5000
300mm	IW-300100AB3	100	30mm	ATAFR	10	.128	5000
300mm	IW-300100ABD3	100	30mm	ATBR	15	.128	5000
300mm	IW-30028CBD3	28	30mm	ATB	25	.128	5000
300mm	IW-30050CBD3	50	30mm	ATB	20	.128	5000
300mm	IW-300100D3	100	30mm	TCG	10	.128	5000
300mm	PP-30075AB	75	30mm	ATAFR	0	.110	5100
300mm	PRS-30080	80	30mm	TCG	-5	.110	5100
350mm	IW-350100AB3	100	30mm	ATAFR	10	.136	4300
350mm	IW-350100ABD3	100	30mm	ATBR	15	.136	4300
350mm	IW-35032CBD3	32	30mm	ATB	25	.136	4300
350mm	IW-35060CBD3	60	30mm	ATB	20	.136	4300
350mm	IW-350100D3	100	30mm	TCG	10	.136	4300

Table Saws

8-1/4"	AC-21060DN	60	5/8"KO	TCG	-5	.087	7300
8-1/4"	ML-21060H	60	5/8"	HATB	-5	.118	7300
8-1/4"	ML-21080AB	80	5/8"	ATAFR	0	.110	7300
8-1/4"	PRF-21048BW	48	5/8"KO	MTCG	0	.087	5800
8-1/4"	PT-21018	18	5/8"KO	ATB	25	.075	7300
8-1/4"	PT-21040	40	5/8"KO	ATB	15	.079	7300
8-1/4"	PT-21060	60	5/8"KO	ATAF	12	.079	7300
10"	BP-25506	6	5/8"	FTG	8	.098	5870
10"	BP-25532	32	5/8"	ATAF	5	.091	5870
10"	GM-25540	40	5/8"	ATB	20	.111	5870
10"	IL-25580H1	80	5/8"	HATB	-5	.118	5870
10"	IS-25560D1	60	5/8"	TCG	-5	.102	5870
10"	IW-25524CBD1	24	5/8"	ATB	20	.126	5870
10"	IW-25530D1	30	5/8"	TCG	20	.142	5870

Table Saws continued

DIA	MODEL NO.	#T	ARBOR	GRIND	RAKE	KERF	RPM
10"	IW-25540CBD1	40	5/8"	ATB	10	.118	5870
10"	IW-25540D1	40	5/8"	TCG	10	.118	5870
10"	IW-25560CBD1	60	5/8"	ATB	10	.118	5870
10"	IW-25560D1	60	5/8"	TCG	10	.118	5870
10"	ML-255100AB	100	5/8"	ATAFR	0	.118	5870
10"	ML-255100H	100	5/8"	HATB	-5	.118	5870
10"	ML-25580AB	80	5/8"	ATAFR	0	.118	5870
10"	ML-25580H	80	5/8"	HATB	-5	.118	5870
10"	PC-25580CB	80	5/8"	ATAF	5	.102	5870
10"	PR-255100AB	100	5/8"	ATAFR	15	.118	5870
10"	PR-25560CBN	60	5/8"	ATB	20	.110	5870
10"	PR-25560D	60	5/8"	TCG	10	.110	5870
10"	PR-25580CBN	80	5/8"	ATB	20	.118	5870
10"	PR-25580D	80	5/8"	TCG	10	.118	5870
10"	PRP-255120AB3	120	5/8"	ATAFR	0	.079	5870
10"	PRP-25580CB	80	5/8"	ATAF	5	.125	5870
10"	PRS-25560	60	5/8"	TCG	-5	.102	5870
10"	PRS-25580	80	5/8"	TCG	-5	.102	5870
10"	RS-25524CBN	24	5/8"	ATB	20	.126	5870
10"	RS-25524-U	24	5/8"	ATB	20	.079	5870
10"	RS-25536CBN	36	5/8"	ATB	20	.126	5870
10"	RS-25540	40	5/8"	ATAF	15	.118	5870
10"	RS-25540-U	40	5/8"	ATAF	20	.079	5870
10"	RS-25548CBN	48	5/8"	ATB	20	.126	5870
10"	RS-25550	50	5/8"	ATBR	15	.125	5870
10"	RS-25550-2	50	5/8"	ATBR	15	.125	5870
10"	RS-25560	60	5/8"	ATAF	10	.118	5870
10"	RS-25560D	60	5/8"	TCG	10	.126	5870
12"	BP-30540	40	1"	ATAF	5	.091	5000
12"	GM-30560	60	1"	ATB	20	.118	5000
12"	IL-305100H2	100	1"	HATB	-5	.118	5000
12"	IS-30580D2	80	1"	TCG	-5	.110	5000
12"	IW-30528CBD2	28	1"	ATB	20	.126	5000
12"	IW-30536D2	36	1"	TCG	20	.157	5000
12"	IW-30550AB2A	50	1"	ATAFR	20	.118	5000
12"	ML-305100AB	100	1"	ATAFR	0	.126	5000
12"	ML-305100H	100	1"	HATB	-5	.126"	4700
12"	ML-305120AB	120	1"	ATAFR	0	.126	5000
12"	ML-30580H	80	1"	HATB	-5	.126"	5000
12"	PC-305100CB	100	1"	ATAF	5	.110	5000
12"	PR-305100AB	100	1"	ATAFR	15	.118	5000
12"	PR-30560CBN	60	1"	ATB	20	.118	5000
12"	PR-30580CBN	80	1"	ATB	20	.118	5000
12"	PRP-305100CB	100	1"	ATAF	5	.134	5000
12"	PRS-305100	100	1"	TCG	-5	.110	5000
12"	PRS-30580	80	1"	TCG	-5	.110	5000
12"	RS-30524CBN	24	1"	ATB	20	.134	5000
12"	RS-30536CBN	36	1"	ATB	20	.134	5000
12"	RS-30548CBN	48	1"	ATB	20	.134	5000
12"	RS-30560	60	1"	ATB	5	.136	5000

Reference by Machine

Table Saws continued

DIA	MODEL NO.	#T	ARBOR	GRIND	RAKE	KERF	RPM
14"	GM-35560	60	1"	ATB	20	.126	4300
14"	IW-35532CBD2	32	1"	ATB	20	.138	4300
14"	IW-35540D2	40	1"	TCG	20	.157	4300
14"	ML-355100H	100	1"	HATB	-5	.126"	4700
14"	ML-355120AB	120	1"	ATAFR	0	.126	4300
14"	PC-355100CB	100	1"	ATAF	5	.118	4300
14"	PR-355100AB	100	1"	ATAFR	15	.118	4300
14"	PR-35580AB	80	1"	ATAFR	15	.118	4300
14"	PRP-355100CB	100	1"	ATAF	5	.134	4300
14"	PRS-355100	100	1"	TCG	-5	.126	4300
14"	RS-35524CBN	24	1"	ATB	20	.142	4300
14"	RS-35536CBN	36	1"	ATB	20	.142	4300
14"	RS-35548CBN	48	1"	ATB	20	.142	4300

Grinders/Mason Saws

DIA	MODEL NO.	#T	ARBOR	GRIND	RAKE	KERF	RPM
4"	TSD-105C		7/8"	Grinding Cup			14500
4-1/8"	DA-105T-SL		20mm	TURBO			14500
4-1/8"	DA-105T-SL2		7/8"	TURBO			14500
4-1/8"	DA-105T-GL		20mm	TURBO			14500
4-1/8"	DA-105T-GL2		7/8"	TURBO			14500
4-1/8"	DA-105S-SL		20mm	SEGMENT			14500
4-1/8"	DA-105S-SL2		7/8"	SEGMENT			14500
4-1/8"	DA-105S-GL		20mm	SEGMENT			14500
4-1/8"	DA-105S-GL2		7/8"	SEGMENT			14500
4-3/8"	DA-110R-SL		7/8"	Continuous Rim			13800
4-3/8"	DA-110S-SL		7/8"	SEGMENT			13800
5"	DA-125T-SL		7/8"	TURBO			12200
5"	DA-125S-SL		7/8"	SEGMENT			12200
7"	DA-180T-GL		5/8"KO	TURBO			8400
7-1/4"	DA-185S-SL		5/8"KO	SEGMENT			8300
12"	DA-305T-SL		1"	TURBO			TBD

Reference by Material

Brush & Vegetation

DIA	MODEL NO.	#T	ARBOR	GRIND	RAKE	KERF	RPM
9"	GR-23032	32	1"	ATAF	5	.089	10000
10"	GR-25536	36	1"	ATAF	5	.089	10000

Ferrous Metals (Mild Steel)

DIA	MODEL NO.	#T	ARBOR	GRIND	RAKE	KERF	RPM
5-3/8"	CF-13530M	30	10mm	MTCG	0	.059	3200
5-3/8"	CF-13550M	50	10mm	MTCG	0	.055	3200
6"	CF-15238M	38	1/2"	MTCG	0	.063	2600
6"	PRF-15238	38	1/2"	MTCG	0	.079	9500
6-1/4"	PRF-16048	48	5/8"KO	MTCG	0	.079	2400
6-1/2"	CF-16548M	48	5/8"	MTCG	0	.079	2600
6-3/4"	CF-17340M	40	20mm	ATB	0	.071	3500
7-1/4"	PRF-18536BWK	36	5/8"KO	MTCG	0	.079	5800
7-1/4"	PRF-18536BWK2	36	20mm	MTCG	0	.079	5800
7-1/4"	PRF-18536CBNP	36	Dia only	ATB	0	.075	8300

Reference by Material

continued

DIA	MODEL NO.	#T	ARBOR	GRIND	RAKE	KERF	RPM
7-1/4"	PRF-18536CBNP2	36	20mm	ATB	0	.075	8300
7-1/4"	PRF-18538BW	38	5/8"KO	ATB	0	.079	5800
7-1/4"	PRF-18538BW2	38	20mm	ATB	0	.079	5800
7-1/4"	PRF-18538DS	38	5/8"KO	TCG	0	.079	5800
7-1/4"	PRF-18548BW	48	5/8"KO	ATB	0	.079	5800
7-1/4"	PRF-18548BW2	48	20mm	ATB	0	.079	5800
7-1/4"	PRF-18548BWK	48	5/8"KO	ATB	0	.079	5800
7-1/4"	PRF-18548BWK2	48	20mm	ATB	0	.079	5800
7-1/4"	PRF-18548DS	48	5/8"KO	TCG	0	.079	5800
7-1/4"	PRF-18556CB	56	5/8"KO	ATAF	-10	.071	5800
7-1/4"	PRF-18570BW2	70	20mm	ATB	-10	.069	5800
7-1/4"	PRF-18570CBN	70	5/8"KO	ATB	-10	.069	5800
8"	PRF-20348BWK	48	5/8"	MTCG	0	.087	3700
8"	PRF-20348CBN	48	5/8"	MTCG	0	.087	3700
8-1/4"	PRF-21048BW	48	5/8"KO	MTCG	0	.087	5800
8-1/4"	PRF-21048BWK	48	5/8"KO	MTCG	0	.079	5800
9"	PRF-23048BWK	48	1"	MTCG	0	.087	2700
9"	PRF-23048CBN	48	1"	ATB	0	.087	2700
10"	PRF-25550D	50	1", 5/8"	TCG	0	.098	1900
10"	PRF-25550DS	50	1", 5/8"	TCG	0	.098	1900
12"	PRF-30560D	60	1"	TCG	0	.098	2000
12"	PRF-30560DK	60	1"	TCG	0	.098	2000
12"	PRF-30560DS	60	1"	TCG	0	.094	2000
12"	PRF-30580BWS	80	1"	MTCG	0	.094	2000
14"	PRF-35572D	72	1"	TCG	0	.094	1700
14"	PRF-35572DK	72	1"	TCG	0	.098	1700
14"	PRF-35572DS	72	1"	TCG	0	.094	1700
14"	PRF-35590BWS	90	1"	MTCG	0	.094	1700
16"	PRF-40580D	80	1"	TCG	0	.102	1700

Fiber Cement Board

DIA	MODEL NO.	#T	ARBOR	GRIND	RAKE	KERF	RPM
7-1/4"	BP-18505	5	5/8"KO	FTG	12	.091	8300
7-1/4"	BP-18524	24	5/8"KO	ATAF	10	.075	8300
7-1/4"	PT-18540CB	40	5/8"KO	ATAF	12	.073	8300
10"	BP-25506	6	5/8"	FTG	8	.098	5870
10"	BP-25532	32	5/8"	ATAF	5	.091	5870
12"	BP-30508	8	1"	FTG	8	.098	5000
12"	BP-30540	40	1"	ATAF	5	.091	5000

Melamine & Veneer Plywoods

DIA	MODEL NO.	#T	ARBOR	GRIND	RAKE	KERF	RPM
250mm	IW-25080AB3	80	30mm	ATAFR	10	.128	5870
250mm	IL-25050YHB3	50	30mm	Hollow	10	.128	5870
250mm	IW-25080D3	80	30mm	TCG	10	.128	5870
10"	IL-25580H1	80	5/8"	HATB	-5	.118	5870
8-1/4"	ML-21080AB	80	5/8"	ATAFR	0	.110	7300
8-1/4"	ML-21060H	60	5/8"	HATB	-5	.118	7300
10"	ML-255100AB	100	5/8"	ATAFR	0	.118	5870
10"	ML-255100H	100	5/8"	HATB	-5	.118	5870
10"	ML-25580AB	80	5/8"	ATAFR	0	.118	5870
10"	ML-25580H	80	5/8"	HATB	-5	.118	5870
300mm	IW-300100AB3	100	30mm	ATAFR	10	.128	5000

Reference by Material

CONTINUED

NOTE:
See "Reference by Diameter" section (pg 36-40) to locate blade details in the earlier text of this catalog.

Melamine & Veneer Plywoods cont'd.

DIA	MODEL NO.	#T	ARBOR	GRIND	RAKE	KERF	RPM
300mm	IL-30060YHB3	60	30mm	Hollow	-10	.128	5000
300mm	IL-30060YHB3N	60	30mm	Hollow	-5	.128	5000
300mm	IW-300100D3	100	30mm	TCG	10	.128	5000
12"	IL-305100H2	100	1"	HATB	100	.118	5000
12"	ML-305100AB	100	1"	ATAFR	0	.126	5000
12"	ML-305100H	100	1"	HATB	-5	.126	4700
12"	ML-305120AB	120	1"	ATAFR	0	.126	5000
12"	ML-30580H	80	1"	HATB	-5	.126	5000
350mm	IW-350100AB3	100	30mm	ATAFR	10	.136	4300
350mm	IW-350100D3	100	30mm	TCG	10	.136	4300
14"	ML-355100H	100	1"	HATB	-5	.126	4700
14"	ML-355120AB	120	1"	ATAFR	0	.126	4300

Non-Ferrous (aluminum, copper, brass, etc)

4"	AC-10036	36	20mm	ATB	10	.055	11000
6"	CF-15254A	54	1/2"	ATB	0	.063	2600
6-1/2"	CF-16560A	60	5/8"	ATB	0	.079	2600
7-1/4"	AC-18560D	60	5/8"KO	TCG	0	.079	8300
7-1/4"	PRA-18560D	60	5/8"	TCG	0	.110	8300
8"	AC-20360DN	60	5/8"	TCG	-5	.087	7300
8-1/4"	AC-21060DN	60	5/8"KO	TCG	-5	.087	7300
8-1/2"	AC-21660DN	60	5/8"KO	TCG	-5	.087	7000
8-1/2"	PRA-21660DN	60	5/8"	TCG	-5	.110	7000
10"	AC-255100DN	100	5/8"	TCG	-5	.094	5870
10"	AC-25560DN	60	5/8"	TCG	-5	.087	5870
10"	AC-25580DN	80	5/8"	TCG	-5	.094	5870
10"	PRA-255100DN	100	5/8"	TCG	-5	.102	5870
10"	PRA-25580DN	80	5/8"	TCG	-5	.126	5870
12"	AC-305100DN	100	1"	TCG	-5	.110	5000
12"	AC-30580DN	80	1"	TCG	-5	.110	5000
12"	PRA-305100DN	100	1"	TCG	-5	.134	5000
12"	PRA-305100DN2	100	5/8"	TCG	-5	.134	5000
14"	AC-355100DN	100	1"	TCG	-5	.118	4300
14"	PRA-355100DN	100	1"	TCG	-5	.134	4300
15"	AC-380100DN	100	1"	TCG	-5	.118	4020
16"	AC-405120DN	120	1"	TCG	-5	.134	3690

Plastic

4"	PC-10036	36	20mm	ATAF	10	.055	11000
6"	CF-15256P	56	1/2"	ATB	0	.063	2600
6-1/2"	CF-16560P	60	5/8"	ATB	0	.079	2600
7-1/4"	PC-18560CB	60	5/8"KO	ATAF	5	.079	8300
10"	PC-25580CB	80	5/8"	ATAF	5	.102	5870
10"	PRP-255120AB3	120	5/8"	ATAFR	0	.079	5870
10"	PRP-25580CB	80	5/8"	ATAF	5	.125	5870
12"	PC-305100CB	100	1"	ATAF	5	.110	5000
12"	PRP-305100CB	100	1"	ATAF	5	.134	5000
14"	PC-355100CB	100	1"	ATAF	5	.118	4300
14"	PRP-355100CB	100	1"	ATAF	5	.134	4300

Solid Surface Materials

DIA	MODEL NO.	#T	ARBOR	GRIND	RAKE	KERF	RPM
7-1/4"	PRS-18540	40	5/8"KO	TCG	-5	.094	5800
8"	PRS-20360	60	5/8"	TCG	-5	.094	7300
220mm	PRS-22064	64	30mm	TCG	-5	.102	6900
10"	IS-25560D1	60	5/8"	TCG	-5	.102	5870
10"	PRS-25560	60	5/8"	TCG	-5	.102	5870
10"	PRS-25580	80	5/8"	TCG	-5	.102	5870
300mm	PRS-30080	80	30mm	TCG	-5	.110	5100
12"	IS-30580D2	80	1"	TCG	-5	.110	5000
12"	PRS-305100	100	1"	TCG	-5	.110	5000
12"	PRS-30580	80	1"	TCG	-5	.110	5000
14"	PRS-355100	100	1"	TCG	-5	.126	4300
16"	PRS-405120	120	1"	TCG	-5	.134	3690
18"	PRS-455120	120	1"	TCG	-5	.134	3400

Stainless Steel

12"	SPS-30578	78	1"	MTCG	10	.087	1700
14"	SPS-35590	90	1"	MTCG	10	.087	1700

Wood

3-3/8"	CF-08520	20	15mm	ATB	10	.039	2240
4"	PT-10006-1	6	22mm	FTG	20	.157	11000
4"	PT-10006-2	6	22mm	ATAFR	25/-15	.157	11000
4"	PT-10024	24	20mm	ATAF	18	.055	11000
4-3/8"	PT-11036	36	20mm	ATAF	15	.063	13800
4-1/2"	PT-11536	36	3/8"	ATAF	15	.063	13200
5-3/8"	CF-13530W	30	10mm	ATAF	20	.047	3200
5-1/2"	CF-14036W	36	10mm	ATAF	15	.063	4200
5-1/2"	PT-14036	36	5/8", 1/2"	ATAF	15	.063	10800
6"	CF-15218W	18	1/2"	ATAF	15	.063	2600
6"	CF-15236W	36	1/2"	ATAF	15	.063	2600
6"	PT-15236	36	1/2"	ATAF	15	.063	9500
6-1/2"	CF-16524W	24	5/8"	ATAF	20	.059	2600
6-1/2"	CF-16540W	40	5/8"	ATAF	20	.059	2600
6-1/2"	PT-16524	24	5/8"KO	ATB	20	.079	9250
6-1/2"	PT-16524-T	24	5/8"KO	ATAF	20	.059	9250
6-1/2"	PT-16540	40	5/8"KO	ATB	20	.079	9250
6-1/2"	PT-16540CR	40	BEVEL	ATB	18	.063	5300
6-1/2"	PT-16540-T	40	5/8"KO	ATB	18	.063	9250
6-1/2"	PT-16552-T	52	5/8"KO	ATAF	18	.063	9250
6-1/2"	SL-16552	52	5/8"KO	ATAF	18	.063	9250
7-1/4"	PT-18516B	16	5/8"KO	ATB	27	.073	8300
7-1/4"	PT-18520B	20	5/8"KO	ATB	27	.073	8300
7-1/4"	PT-18524AM	24	5/8"KO	ATB	20	.070	8300
7-1/4"	PT-18524-P	24	5/8"KO	ATB	20	.070	8300
7-1/4"	PT-18524V	24	5/8"KO	ATB	20	.070	8300
7-1/4"	PT-18540	40	5/8"KO	ATB	27	.073	8300
7-1/4"	PT-18540-T	40	5/8"KO	ATB	18	.063	8300
7-1/4"	PT-18552-T	52	5/8"KO	ATAF	18	.063	8300
7-1/4"	SL-18552	52	5/8"KO	ATAF	18	.063	8300

Reference by Material

NOTE:
See "Reference by Diameter" section (pg 36-40) to locate blade details in the earlier text of this catalog.

Wood (continued) **continued**

DIA	MODEL NO.	#T	ARBOR	GRIND	RAKE	KERF	RPM
8"	PP-20360AB	60	5/8"	ATAFR	0	.110	7300
8"	PT-20360	60	5/8"	ATAF	5	.087	7300
8-1/4"	PT-21018	18	5/8"KO	ATB	25	.075	7300
8-1/4"	PT-21040	40	5/8"KO	ATB	15	.079	7300
8-1/4"	PT-21060	60	5/8"KO	ATAF	12	.079	7300
8-1/2"	PT-21624	24	5/8"	ATB	15	.087	7000
8-1/2"	PT-21640	40	5/8"	ATB	15	.087	7000
8-1/2"	PT-21660-1	60	5/8"	ATAF	5	.079	7000
8-1/2"	PT-21680	80	5/8"	ATAF	10	.087	7000
8-1/2"	SL-21660	60	5/8"	ATAF	5	.079	7000
220mm	PP-22060AB	60	30mm	ATAFR	0	.110	6900
9"	PT-23040	40	5/8"	ATAF	5	.087	6400
250mm	IW-25040CBD3	40	30mm	ATB	20	.128	5870
250mm	IW-25080ABD3	80	30mm	ATBR	15	.128	5870
10"	GM-25540	40	5/8"	ATB	20	.111	5870
10"	IW-25524CBD1	24	5/8"	ATB	20	.126	5870
10"	IW-25530D1	30	5/8"	TCG	20	.142	5870
10"	IW-25540AB1	40	5/8"	ATBR	-3	.110	5870
10"	IW-25540CB1	40	5/8"	ATAF	5	.091	5870
10"	IW-25540CBD1	40	5/8"	ATB	10	.118	5870
10"	IW-25540D	40	5/8"	TCG	10	.118	5870
10"	IW-25560CB1	60	5/8"	ATAF	5	.091	5870
10"	IW-25560CBD1	60	5/8"	ATB	10	.118	5870
10"	IW-25560D1	60	5/8"	TCG	10	.118	5870
10"	IW-25580CB1	80	5/8"	ATAF	5	.091	5870
10"	MP-255100AB	100	5/8"	ATAFR	-3	.110	5870
10"	MP-25560AB	60	5/8"	ATAFR	-3	.110	5870
10"	MP-25560CB	60	5/8"	ATAF	0	.118	5870
10"	MP-25580AB	80	5/8"	ATAFR	-3	.110	5870
10"	MP-25580CB	80	5/8"	ATAF	0	.118	5870
10"	PR-255100AB	100	5/8"	ATAFR	15	.118	5870
10"	PR-25560CBN	60	5/8"	ATB	20	.110	5870
10"	PR-25560D	60	5/8"	TCG	10	.110	5870
10"	PR-25580CBN	80	5/8"	ATB	20	.118	5870
10"	PR-25580D	80	5/8"	TCG	10	.118	5870
10"	PT-25532	32	5/8"	ATAF	5	.091	5870
10"	PT-25540	40	5/8"	ATB	0	.083	5870
10"	PT-25550	50	5/8"	ATAF	15	.091	5870
10"	PT-25560	60	5/8"	ATB	0	.083	5870
10"	PT-25560D	60	5/8"	TCG	10	.087	5870
10"	PT-25572A	72	5/8"	ATB	15	.098	5870
10"	PT-25590	90	5/8"	ATAF	10	.091	5870
10"	RS-25524CBN	24	5/8"	ATB	20	.126	5870
10"	RS-25524-U	24	5/8"	ATB	20	.079	5870
10"	RS-25536CBN	36	5/8"	ATB	20	.126	5870
10"	RS-25540	40	5/8"	ATAF	15	.118	5870
10"	RS-25540-U	40	5/8"	ATAF	20	.079	5870
10"	RS-25548CBN	48	5/8"	ATB	20	.126	5870
10"	RS-25550	50	5/8"	ATBR	15	.125	5870
10"	RS-25550-2	50	5/8"	ATBR	15	.125	5870

Wood (continued)

DIA	MODEL NO.	#T	ARBOR	GRIND	RAKE	KERF	RPM
10"	RS-25560	60	5/8"	ATAF	10	.118	5870
10"	RS-25560D	60	5/8"	TCG	10	.126	5870
10"	SL-25572	72	5/8"	ATAF	10	.110	5870
10-1/4"	PT-26036	36	5/8"KO	ATAF	20	.079	5870
300mm	IW-300100ABD3	100	30mm	ATBR	15	.128	5000
300mm	IW-30028CBD3	28	30mm	ATB	25	.128	5000
300mm	IW-30050CBD3	50	30mm	ATB	20	.128	5000
300mm	PP-30075AB	75	30mm	ATAFR	0	.110	5100
12"	GM-30560	60	1"	ATB	20	.118	5000
12"	IW-30528CBD2	28	1"	ATB	20	.126	5000
12"	IW-30536D2	36	1"	TCG	20	.157	5000
12"	IW-30540CB2	40	1"	ATAF	5	.094	5000
12"	IW-30550AB2	50	1"	ATBR	-3	.110	5000
12"	IW-30550AB2A	50	1"	ATAFR	20	.118	5000
12"	IW-30560CB2	60	1"	ATAF	5	.094	5000
12"	IW-30580CB2	80	1"	ATAF	5	.094	5000
12"	IW-30590AB1	90	5/8"	ATBR	-3	.118	5000
12"	MP-305100AB	100	1"	ATAFR	-3	.118	5000
12"	MP-305100AB2	100	5/8"	ATAFR	-3	.118	5000
12"	MP-305100CB	100	1"	ATAF	0	.126	5000
12"	MP-305100CB2	100	5/8"	ATAF	0	.126	5000
12"	MP-30560AB	60	1"	ATAFR	-3	.118	5000
12"	MP-30560CB	60	1"	ATAF	-5	.118	5000
12"	MP-30580AB	80	1"	ATAFR	-3	.118	5000
12"	MP-30580CB	80	1"	ATAF	0	.118	5000
12"	PR-305100AB	100	1"	ATAFR	15	.118	5000
12"	PR-30560CBN	60	1"	ATB	20	.118	5000
12"	PR-30580CBN	80	1"	ATB	20	.118	5000
12"	PT-305100	100	1"	ATAF	5	.094	5000
12"	PT-30512	12	1"+Bushings	FTG	-8	.134	5000
12"	PT-30524	24	1"+Bushings	FTG	-8	.134	5000
12"	PT-30524A	24	20mm	FTG	-8	.134	5000
12"	PT-30560	60	1"	ATAF	3	.094	5000
12"	PT-30580	80	1"	ATAF	5	.094	5000
12"	RS-30524CBN	24	1"	ATB	20	.134	5000
12"	RS-30536CBN	36	1"	ATB	20	.134	5000
12"	RS-30548CBN	48	1"	ATB	20	.134	5000
12"	RS-30560	60	1"	ATBR	15	.134	5000
12"	SL-305100	100	1"	ATAF	5	.091	5000
350mm	IW-350100ABD3	100	30mm	ATBR	15	.136	4300
350mm	IW-35032CBD3	32	30mm	ATB	25	.136	4300
350mm	IW-35060CBD3	60	30mm	ATB	20	.136	4300
14"	GM-35560	60	1"	ATB	20	.126	4300
14"	IW-355110AB	110	5/8"	ATBR	-3	.118	4300
14"	IW-35532CBD2	32	1"	ATB	20	.138	4300
14"	IW-35540D2	40	1"	TCG	20	.157	4300
14"	IW-35560AB2	60	1"	ATBR	-3	.118	4300
14"	PR-355100AB	100	1"	ATAFR	15	.118	4300
14"	PR-35580AB	80	1"	ATAFR	15	.118	4300
14"	PT-35514	14	1"+Bushings	FTG	-8	.142	4300

Reference by Material

NOTE:
See "Reference by Diameter" section (pg 36-40) to locate blade details in the earlier text of this catalog.

continued

Wood (continued)

DIA	MODEL NO.	#T	ARBOR	GRIND	RAKE	KERF	RPM
14"	PT-35524	24	1"+Bushings	FTG	-8	.142	4300
14"	RS-35524CBN	24	1"	ATB	20	.142	4300
14"	RS-35536CBN	36	1"	ATB	20	.142	4300
14"	RS-35548CBN	48	1"	ATB	20	.142	4300
15"	IW-38060AB2	60	1"	ATBR	-3	.118	4300
15"	MP-380100AB	100	1"	ATAFR	-3	.126"	4020
15"	MP-380100CB	100	1"	ATAF	0	.126	4020
16"	PR-405100CBN	100	1"	ATB	20	.126	3690
16"	RS-40536CBN	36	1"	ATB	20	.134	3690
16"	RS-40560CB	60	1"	ATAF	15	.126	3690

Ductile/Cast Iron

12"	TSD-305D		1" +	TSD Blade			TBD
14"	TSD-355D		1" +	TSD Blade			TBD
12"	TSD-305D2		20mm	TSD Blade			TBD
14"	TSD-355D2		20mm	TSD Blade			TBD
7"	TSD-180D		5/8"KO	TSD Blade			8300
4"	TSD-105C		7/8"	Grinding Cup			14500

Masonry/Concrete

3-3/8"	CF-085D		15mm				Turbo	2240
4-1/8"	DA-105T-SL		20mm				TURBO	14500
4-1/8"	DA-105T-SL2		7/8"				TURBO	14500
4-1/8"	DA-105T-GL		20mm				TURBO	14500
4-1/8"	DA-105T-GL2		7/8"				TURBO	14500
4-1/8"	DA-105S-SL		20mm				SEGMENT	14500
4-1/8"	DA-105S-SL2		7/8"				SEGMENT	14500
4-1/8"	DA-105S-GL		20mm				SEGMENT	14500
4-1/8"	DA-105S-GL2		7/8"				SEGMENT	14500
4-3/8"	DA-110R-SL		7/8"				Continuous Rim	13800
4-3/8"	DA-110S-SL		7/8"				SEGMENT	13800
5"	DA-125T-SL		7/8"				TURBO	12200
5"	DA-125S-SL		7/8"				SEGMENT	12200
7"	DA-180T-GL		5/8"KO				TURBO	8400
7-1/4"	DA-185S-SL		5/8"KO				SEGMENT	8300
12"	DA-305T-SL		1"				TURBO	TBD

Reference by Diameter

MATERIALS KEY:

FB = FIBER CEMENT BOARD	NF = NON-FERROUS
F = FERROUS METALS	ST = STAINLESS STEEL
L = LAMINATES, MELAMINE	SS = SOLID SURFACE
P = PLASTIC	W = WOOD

Tipped Saw Blades

DIA.	MODEL NO.	MODEL NO.	#T	ARBOR	GRIND	RAKE	KERF	RPM	MACHINE	MAT	PG
3-3/8"	CF-08520	CF	20	15mm	ATB	10	.039	2240	Cordless	W	5
4"	AC-10036	AC	36	20mm	ATB	10	.055	11000	Trim saw	NF	19
4"	PC-10036	PC	36	20mm	ATAF	10	.055	11000	Trim saw	P	17
4"	PT-10006-1	PT	6	22mm	FTG	20	.157	11000	Biscuit Joiner	W	8
4"	PT-10006-2	PT	6	22mm	ATAFR	25/-15	.157	11000	Biscuit Joiner	W	8
4"	PT-10024	PT	24	20mm	ATAF	18	.055	11000	Trim saw	W	8
4-3/8"	PT-11036	PT	36	20mm	ATAF	15	.063	13800	Corded Trim	W	8
4-1/2"	PT-11536	PT	36	3/8"	ATAF	15	.063	13200	Corded Trm	W	8
5-3/8"	CF-13530W	CF	30	10mm	ATAF	20	.047	3200	Cordless	W	5
5-3/8"	CF-13530M	CF	30	10mm	MTCG	0	.059	3200	Cordless	F	6
5-3/8"	CF-13550M	CF	50	10mm	MTCG	0	.055	3200	Cordless	F	6
5-1/2"	CF-14036W	CF	36	10mm	ATAF	15	.063	4200	Cordless	W	5
5-1/2"	PT-14036	PT	36	5/8", 1/2"	ATAF	15	.063	10800	Corded Trim	W	8
6"	CF-15218W	CF	18	1/2"	ATAF	15	.063	2600	Cordless	W	5
6"	CF-15236W	CF	36	1/2"	ATAF	15	.063	2600	Cordless	W	5
6"	CF-15238M	CF	38	1/2"	MTCG	0	.063	2600	Cordless	F	6
6"	CF-15254A	CF	54	1/2"	ATB	0	.063	2600	Cordless	NF	6
6"	CF-15256P	CF	56	1/2"	ATB	0	.063	2600	Cordless	P	6
6"	PT-15236	PT	36	1/2"	ATAF	15	.063	9500	Corded Trim	W	8
6"	PRF-15238	PRF	38	1/2"	MTCG	0	.079	9500	Corded Trim	F	21
6-1/4"	PRF-16048	PRF	48	5/8"KO	MTCG	0	.079	2400	Cordless Trim	F	21
6-1/2"	CF-16524W	CF	24	5/8"	ATAF	20	.059	2600	Cordless Trim	W	5
6-1/2"	CF-16540W	CF	40	5/8"	ATAF	20	.059	2600	Cordless Trim	W	5

Reference by Diameter

MATERIALS KEY:

FB = FIBER CEMENT BOARD	NF = NON-FERROUS
F = FERROUS METALS	ST = STAINLESS STEEL
L = LAMINATES, MELAMINE	SS = SOLID SURFACE
P = PLASTIC	W = WOOD

Tipped Saw Blades

DIA.	MODEL NO.	MODEL NO.	#T	ARBOR	GRIND	RAKE	KERF	RPM	MACHINE	MAT	PG
6-1/2"	CF-16548M	CF	48	5/8"	MTCG	0	.079	2600	Cordless Trim	F	6
6-1/2"	CF-16560A	CF	60	5/8"	ATB	0	.079	2600	Cordless Trim	NF	6
6-1/2"	CF-16560P	CF	60	5/8"	ATB	0	.079	2600	Cordless Trim	P	6
6-1/2"	PT-16524	PT	24	5/8"KO	ATB	20	.079	9250	Trim Saws	W	8
6-1/2"	PT-16524-T	PT	24	5/8"KO	ATAF	20	.059	9250	Trim Saws	W	8
6-1/2"	PT-16540	PT	40	5/8"KO	ATB	20	.079	9250	Trim Saws	W	8
6-1/2"	PT-16540-T	PT	40	5/8"KO	ATB	18	.063	9250	Trim Saws	W	8
6-1/2"	PT-16540CR	PT	40	BEVEL	ATB	18	.063	5300	Jamb Saw	W	8
6-1/2"	PT-16552-T	PT	52	5/8"KO	ATAF	18	.063	9250	Trim Saws	W	8
6-1/2"	SL-16552	SL	52	5/8"KO	ATAF	18	.063	9250	Trim Saws	W	9
6-3/4"	CF-17340M	CF	40	20mm	ATB	0	.071	3500	Cordless	F	6
7-1/4"	AC-18560D	AC	60	5/8"KO	TCG	0	.079	8300	Circular Saw	NF	19
7-1/4"	BP-18505	BP	5	5/8"KO	FTG	12	.091	8300	Circular Saw	FB	7
7-1/4"	BP-18506	BP	6	5/8"KO	FTG	10	.094	8300	Circular Saw	FB	7
7-1/4"	BP-18524	BP	24	5/8"KO	ATAF	10	.075	8300	Circular Saw	FB	7
7-1/4"	PC-18560CB	PC	60	5/8"KO	ATAF	5	.079	8300	Circular Saw	P	17
7-1/4"	PRA-18560D	PRA	60	5/8"	TCG	0	.110	8300	Circular Saw	NF	20
7-1/4"	PRF-18536BWK	PRF	36	5/8"KO	MTCG	0	.079	5800	Circular Saw	F	23
7-1/4"	PRF-18536BWK2	PRF	36	20mm	MTCG	0	.079	5800	Circular Saw	F	23
7-1/4"	PRF-18536CBNP	PRF	36	Dia only	ATB	0	.075	8300	WormDrives	F	22
7-1/4"	PRF-18536CBNP2	PRF	36	20mm	ATB	0	.075	8300	WormDrives	F	22
7-1/4"	PRF-18538BW	PRF	38	5/8"KO	ATB	0	.079	5800	Circular Saw	F	21
7-1/4"	PRF-18538BW2	PRF	38	20mm	ATB	0	.079	5800	Circular Saw	F	21
7-1/4"	PRF-18538DS	PRF	38	5/8"KO	TCG	0	.079	5800	Circular Saw	F	22
7-1/4"	PRF-18548BW	PRF	48	5/8"KO	ATB	0	.079	5800	Circular Saw	F	21
7-1/4"	PRF-18548BW2	PRF	48	20mm	ATB	0	.079	5800	Circular Saw	F	21
7-1/4"	PRF-18548BWK	PRF	48	5/8"KO	MTCG	0	.079	5800	Circular Saw	F	23
7-1/4"	PRF-18548BWK2	PRF	48	20mm	MTCG	0	.079	5800	Circular Saw	F	23
7-1/4"	PRF-18548DS	PRF	48	5/8"KO	TCG	0	.079	5800	Circular Saw	F	22
7-1/4"	PRF-18556CB	PRF	56	5/8"KO	ATAF	-10	.071	5800	Circular Saw	F	21
7-1/4"	PRF-18570CBN	PRF	70	5/8"KO	ATB	-10	.069	5800	Circular Saw	F	21
7-1/4"	PRF-18570BW2	PRF	70	20mm	ATB	-10	.069	5800	Circular Saw	F	21
7-1/4"	PRS-18540	PRS	40	5/8"KO	TCG	-5	.094	5800	Circular saw	SS	18
7-1/4"	PT-18516B	PT	16	5/8"KO	ATB	27	.073	8300	Circular Saw	W	9
7-1/4"	PT-18520B	PT	20	5/8"KO	ATB	27	.073	8300	Circular Saw	W	9
7-1/4"	PT-18524AM	PT	24	5/8"KO	ATB	20	.070	8300	Circular Saw	W	7-8
7-1/4"	PT-18524-P	PT	24	5/8"KO	ATB	20	.070	8300	Circular Saw	W	7-8
7-1/4"	PT-18524V	PT	24	5/8"KO	ATB	20	.070	8300	Circular Saw	W	7-8
7-1/4"	PT-18540	PT	40	5/8"KO	ATB	27	.073	8300	Circular Saw	W	8
7-1/4"	PT-18540B	PT	40	5/8"KO	ATAF	18	.063	8300	Circular Saw	W	8
7-1/4"	PT-18540CB	PT	40	5/8"KO	ATAF	12	.073	8300	Circular Saw	FB	8
7-1/4"	PT-18540-T	PT	40	5/8"KO	ATB	18	.063	8300	Circular Saw	W	8
7-1/4"	PT-18552-T	PT	52	5/8"KO	ATAF	18	.063	8300	Circular Saw	W	8
7-1/4"	SL-18552	SL	52	5/8"KO	ATAF	18	.063	8300	Circular Saw	W	9
8"	AC-20360DN	AC	60	5/8"	TCG	-5	.087	7300	Various	NF	19
8"	PP-20360AB	PP	60	5/8"	ATAFR	0	.110	7300	Various	W	16

Reference by Diameter

CONTINUED

MATERIALS KEY:

FB = FIBER CEMENT BOARD	NF = NON-FERROUS
F = FERROUS METALS	ST = STAINLESS STEEL
L = LAMINATES, MELAMINE	SS = SOLID SURFACE
P = PLASTIC	W = WOOD

DIA.	MODEL NO.	MODEL NO.	#T	ARBOR	GRIND	RAKE	KERF	RPM	MACHINE	MAT	PG
8"	PT-20360	PT	60	5/8"	ATAF	5	.087	7300	Various	W	8
8"	PRF-20348BWK	PRF	48	5/8"	MTCG	0	.087	3700	Circular Saw	F	23
8"	PRF-20348CBN	PRF	48	5/8"	MTCG	0	.087	3700	Circular Saw	F	21
8"	PRS-20360	PRS	60	5/8"	TCG	-5	.094	7300	Various	SS	18
8"	GMD-20340	Dado set 8" with two 40 tooth main blades and four 2 tooth chippers								W	14
8-1/4"	AC-21060DN	AC	60	5/8"KO	TCG	-5	.087	7300	Various	NF	19
8-1/4"	ML-21080AB	ML	80	5/8"	ATAFR	0	.110	7300	Various	L	15
8-1/4"	ML-21060H	ML	60	5/8"	HATB	-5	.118	7300	Table Saws	L	15
8-1/4"	PRF-21048BW	PRF	48	5/8"KO	MTCG	0	.087	5800	Various	F	21
8-1/4"	PRF-21048BWK	PRF	48	5/8"KO	MTCG	0	.079	5800	Circular Saw	F	23
8-1/4"	PT-21018	PT	18	5/8"KO	ATB	25	.075	7300	Various	W	8
8-1/4"	PT-21040	PT	40	5/8"KO	ATB	15	.079	7300	Various	W	8
8-1/4"	PT-21060	PT	60	5/8"KO	ATAF	12	.079	7300	Various	W	8
8-1/2"	AC-21660DN	AC	60	5/8"KO	TCG	-5	.087	7000	Miter Saws	NF	19
8-1/2"	PRA-21660DN	PRA	60	5/8"	TCG	-5	.110	7000	Miter Saws	NF	20
8-1/2"	PT-21624	PT	24	5/8"	ATB	15	.087	7000	Miter Saws	W	9
8-1/2"	PT-21640	PT	40	5/8"	ATB	15	.087	7000	Miter Saws	W	9
8-1/2"	PT-21660-1	PT	60	5/8"	ATAF	5	.079	7000	Miter Saws	W	9
8-1/2"	PT-21680	PT	80	5/8"	ATAF	10	.087	7000	Miter Saws	W	9
8-1/2"	SL-21660	SL	60	5/8"	ATAF	5	.079	7000	Miter Saws	W	9
220mm	PP-22060AB	PP	60	30mm	ATAFR	0	.110	6900	Panel Saws	W	16
220mm	PRS-22064	PRS	64	30mm	TCG	-5	.102	6900	Panel Saws	SS	18
9"	GR-23032	GR	32	1"	ATAF	5	.089	10000	Brush Cutters	B	29
9"	PRF-23048BWK	PRF	48	1"	MTCG	0	.087	2700	Circular Saw	F	23
9"	PRF-23048CBN	PRF	48	1"	ATB	0	.087	2700	Circular Saw	F	21
9"	PT-23040	PT	40	5/8"	ATAF	5	.087	6400	Miter Saws	W	9
250mm	IL-25050YHB3	IL	50	30mm	Hollow	10	.128	5870	Various	L	25
250mm	IW-25040CBD3	IW	40	30mm	ATB	20	.128	5870	Various	W	25
250mm	IW-25080AB3	IW	80	30mm	ATAFR	10	.128	5870	Various	L	25
250mm	IW-25080ABD3	IW	80	30mm	ATBR	15	.128	5870	Various	W	25
250mm	IW-25080D3	IW	80	30mm	TCG	10	.128	5870	Various	L	25
10"	AC-25560DN	AC	60	5/8"	TCG	-5	.087	5870	Miter Saws	NF	19
10"	AC-25580DN	AC	80	5/8"	TCG	0	.094	5870	Miter Saws	NF	19
10"	AC-255100DN	AC	100	5/8"	TCG	-5	.094	5870	Miter Saws	NF	19
10"	BP-25506	BP	6	5/8"	TCG	6	.098	5870	Table, Miter	FB	7
10"	BP-25532	BP	32	5/8"	ATAF	5	.091	5870	Table, Miter	FB	7
10"	GM-25540	GM	40	5/8"	ATB	20	.111	5870	Table Saws	W	13
10"	GR-25536	GR	36	1"	ATAF	5	.089	10000	Brush Cutters	B	29
10"	IL-25580H1	IL	80	5/8"	HATB	-5	.118	5870	Table Saws	L	26
10"	IS-25560D1	IS	60	5/8"	TCG	-5	.102	5870	Table Saws	SS	26
10"	IW-25524CBD1	IW	24	5/8"	ATB	20	.126	5870	Table Saws	W	26
10"	IW-25530D1	IW	30	5/8"	TCG	20	.142	5870	Table Saws	W	26
10"	IW-25540AB1	IW	40	5/8"	ATBR	-3	.110	5870	Miter Saws	W	26
10"	IW-25540CB1	IW	40	5/8"	ATAF	5	.091	5870	Miter Saws	W	26
10"	IW-25540CBD1	IW	40	5/8"	ATB	10	.118	5870	Table Saws	W	26
10"	IW-25540D1	IW	40	5/8"	TCG	10	.118	5870	Table Saws	W	26

Reference by Diameter

CONTINUED

MATERIALS KEY:

FB = FIBER CEMENT BOARD	NF = NON-FERROUS
F = FERROUS METALS	ST = STAINLESS STEEL
L = LAMINATES, MELAMINE	SS = SOLID SURFACE
P = PLASTIC	W = WOOD

DIA.	MODEL NO.	MODEL NO.	#T	ARBOR	GRIND	RAKE	KERF	RPM	MACHINE	MAT	PG
10"	IW-25560CB1	IW	60	5/8"	ATAF	5	.091	5870	Miter Saws	W	26
10"	IW-25560CBD1	IW	60	5/8"	ATB	10	.118	5870	Table Saws	W	26
10"	IW-25560D1	IW	60	5/8"	TCG	10	.118	5870	Table Saws	W	26
10"	IW-25580CB1	IW	80	5/8"	ATAF	5	.091	5870	Miter Saws	W	26
10"	ML-25580AB	ML	80	5/8"	ATAFR	0	.118	5870	Table Saws	L	15
10"	ML-255100AB	ML	100	5/8"	ATAFR	0	.118	5870	Table Saws	L	15
10"	ML-25580H	ML	80	5/8"	HATB	-5	.118	5870	Table Saws	L	15
10"	ML-255100H	ML	100	5/8"	HATB	-5	.118	5870	Table Saws	L	15
10"	MP-25560CB	MP	60	5/8"	ATAF	0	.118	5870	Miter Saws	W	10
10"	MP-25580CB	MP	80	5/8"	ATAF	0	.118	5870	Miter Saws	W	10
10"	MP-25560AB	MP	60	5/8"	ATAFR	-3	.110	5870	Miter Saws	W	10
10"	MP-25580AB	MP	80	5/8"	ATAFR	-3	.110	5870	Miter Saws	W	10
10"	MP-255100AB	MP	100	5/8"	ATAFR	-3	.110	5870	Miter Saws	W	10
10"	PC-25580CB	PC	80	5/8"	ATAF	5	.102	5870	Various	P	17
10"	PR-25560CBN	PR	60	5/8"	ATB	20	.110	5870	Various	W	12
10"	PR-25560D	PR	60	5/8"	TCG	10	.110	5870	Various	W	12
10"	PR-25580CBN	PR	80	5/8"	ATB	20	.118	5870	Various	W	12
10"	PR-25580D	PR	80	5/8"	TCG	10	.118	5870	Various	W	12
10"	PR-255100AB	PR	100	5/8"	ATAFR	15	.118	5870	Various	W	12
10"	PRA-25580DN	PRA	80	5/8"	TCG	-5	.126	5870	Miter Saws	NF	20
10"	PRA-255100DN	PRA	100	5/8"	TCG	-5	.102	5870	Miter Saws	NF	20
10"	PRF-25550D	PRF	50	1", 5/8"	TCG	0	.098	1900	Circular Saws	F	21
10"	PRF-25550DS	PRF	50	1", 5/8"	TCG	0	.098	1900	Circular Saws	F	22
10"	PRP-25580CB	PRP	80	5/8"	ATAF	5	.125	5870	Various	P	17
10"	PRP-255120AB3	PRP	120	5/8"	ATAFR	0	.079	5870	Various	P	17
10"	PRS-25560	PRS	60	5/8"	TCG	-5	.102	5870	Various	SS	18
10"	PRS-25580	PRS	80	5/8"	TCG	-5	.102	5870	Various	SS	18
10"	PT-25532	PT	32	5/8"	ATAF	5	.091	5870	Miter Saws	W	9
10"	PT-25540	PT	40	5/8"	ATB	0	.083	5870	Miter Saws	W	9
10"	PT-25550	PT	50	5/8"	ATAF	15	.091	5870	Miter Saws	W	9
10"	PT-25560	PT	60	5/8"	ATB	0	.083	5870	Miter Saws	W	9
10"	PT-25560D	PT	60	5/8"	TCG	10	.087	5870	Miter Saws	W	9
10"	PT-25572A	PT	72	5/8"	ATB	15	.098	5870	Miter Saws	W	9
10"	PT-25590	PT	90	5/8"	ATAF	10	.091	5870	Miter Saws	W	9
10"	RS-25524CBN	RS	24	5/8"	ATB	20	.126	5870	Table Saws	W	11
10"	RS-25524-U	RS	24	5/8"	ATB	20	.079	5870	Table Saws	W	11
10"	RS-25536CBN	RS	36	5/8"	ATB	20	.126	5870	Table Saws	W	11
10"	RS-25540	RS	40	5/8"	ATAF	15	.118	5870	Table Saws	W	11
10"	RS-25540-U	RS	40	5/8"	ATAF	20	.079	5870	Table Saws	W	11
10"	RS-25548CBN	RS	48	5/8"	ATB	20	.126	5870	Table Saws	W	11
10"	RS-25550	RS	50	5/8"	ATBR	15	.125	5870	Table Saws	W	11
10"	RS-25550-2	RS	50	5/8"	ATBR	15	.125	5870	Table Saws	W	11
10"	RS-25560	RS	60	5/8"	ATAF	10	.118	5870	Table Saws	W	11
10"	RS-25560D	RS	60	5/8"	TCG	10	.126	5870	Table Saws	W	11
10"	SL-25572	SL	72	5/8"	ATAF	10	.110	5870	Miter Saws	W	9
10-1/4"	PT-26036	PT	36	5/8"KO	ATAF	20	.079	5870	Circular saws	W	8
300mm	IL30060YHB3	IL	60	30mm	Hollow	10	.128	5000	Various	L	25

Reference by Diameter

CONTINUED

MATERIALS KEY:

FB = FIBER CEMENT BOARD	NF = NON-FERROUS
F = FERROUS METALS	ST = STAINLESS STEEL
L = LAMINATES, MELAMINE	SS = SOLID SURFACE
P = PLASTIC	W = WOOD

DIA.	MODEL NO.	MODEL NO.	#T	ARBOR	GRIND	RAKE	KERF	RPM	MACHINE	MAT	PG
300mm	IL30060YHB3N	IL	60	30mm	Hollow	-5	.128	5000	Various	L	25
300mm	IW-300100AB3	IW	100	30mm	ATAFR	10	.128	5000	Various	L	25
300mm	IW300100ABD3	IW	100	30mm	ATBR	15	.128	5000	Various	W	25
300mm	30028CBD3	IW	28	30mm	ATB	25	.128	5000	Various	W	25
300mm	IW-30050CBD3	IW	50	30mm	ATB	20	.128	5000	Various	W	25
300mm	IW-300100D3	IW	100	30mm	TCG	10	.128	5000	Various	L	25
300mm	PP-30075AB	PP	75	30mm	ATAFR	0	.110	5100	Panel Saws	W	16
300mm	PRS-30080	PRS	80	30mm	TCG	-5	.110	5100	Panel Saws	SS	18
12"	AC-30580DN	AC	80	1"	TCG	-5	.110	5000	Miter Saws	NF	19
12"	AC-305100DN	AC	100	1"	TCG	-5	.110	5000	Miter Saws	NF	19
12"	BP-30508	BP	8	1"	TCG	8	.098	5000	Table, Miter	FB	7
12"	BP-30540	BP	40	1"	ATAF	5	.091	5000	Table, Miter	FB	7
12"	GM-30560	GM	60	1"	ATB	20	.118	5000	Table Saws	W	13
12"	IL-305100H2	IL	100	1"	HATB	-5	.118	5000	Table Saws	L	26
12"	IS-30580D2	IS	80	1"	TCG	-5	.110	5000	Table Saws	SS	26
12"	IW-30528CBD2	IW	28	1"	ATB	20	.126	5000	Table Saws	W	26
12"	IW-30536D2	IW	36	1"	TCG	20	.157	5000	Table Saws	W	26
12"	IW-30540CB2	IW	40	1"	ATAF	40	.094	5000	Miter Saws	W	26
12"	IW-30550AB2	IW	50	1"	ATBR	50	.110	5000	Miter Saws	W	26
12"	IW-30550AB2A	IW	50	1"	ATAFR	50	.118	5000	Straight Line Rip Saw	W	26
12"	IW-30560CB2	IW	60	1"	ATAF	60	.094	5000	Miter Saws	W	26
12"	IW-30580CB2	IW	80	1"	ATAF	80	.094	5000	Miter Saws	W	26
12"	IW-30590AB1	IW	90	1"	ATBR	90	.118	5000	Double Miter	W	26
12"	ML-305100AB	ML	100	1"	ATAFR	0	.126	5000	Various	L	15
12"	ML-305120AB	ML	120	1"	ATAFR	0	.126	5000	Various	L	15
12"	ML-30580H	ML	80	1"	HATB	-5	.126	5000	Table Saws	L	15
12"	ML-305100H	ML	100	1"	HATB	-5	.126	4700	Table Saws	L	15
12"	MP-30560CB	MP	60	1"	ATAF	-5	.118	5000	Miter Saws	W	10
12"	MP-30580CB	MP	80	1"	ATAF	0	.118	5000	Miter Saws	W	10
12"	MP-305100CB	MP	100	1"	ATAF	0	.126	5000	Miter Saws	W	10
12"	MP-305100CB2	MP	100	5/8"	ATAF	0	.126	5000	Miter Saws	W	10
12"	MP-30560AB	MP	60	1"	ATAFR	-3	.118	5000	Miter Saws	W	10
12"	MP-30580AB	MP	80	1"	ATAFR	-3	.118	5000	Miter Saws	W	10
12"	MP-305100AB	MP	100	1"	ATAFR	-3	.118	5000	Miter Saws	W	10
12"	MP-305100AB2	MP	100	5/8"	ATAFR	-3	.118	5000	Double Miter	W	10
12"	PC-305100CB	PC	100	1"	ATAF	5	.110	5000	Various	P	17
12"	PR-30560CBN	PR	60	1"	ATB	20	.118	5000	Various	W	12
12"	PR-30580CBN	PR	80	1"	ATB	20	.118	5000	Various	W	12
12"	PR-305100AB	PR	100	1"	ATAFR	15	.118	5000	Various	W	12
12"	PRA-305100DN	PRA	100	1"	TCG	-5	.134	5000	Miter Saws	NF	20
12"	PRA-305100DN2	PRA	100	5/8"	TCG	-5	.134	5000	Miter Saws	NF	20
12"	PRF-30560D	PRF	60	1"	TCG	0	.098	2000	Dry Cut saws	F	21
12"	PRF-30560DK	PRF	60	1"	TCG	0	.098	2000	Dry Cut saws	F	23
12"	PRF-30560DS	PRF	60	1"	TCG	0	.094	2000	Dry Cut saws	F	22
12"	PRF-30580BWS	PRF	80	1"	MTCG	0	.094	2000	Dry Cut saws	F	22
12"	PRP-305100CB	PRP	100	1"	ATAF	5	.134	5000	Various	P	17

Reference by Diameter

MATERIALS KEY:

FB = FIBER CEMENT BOARD	NF = NON-FERROUS
F = FERROUS METALS	ST = STAINLESS STEEL
L = LAMINATES, MELAMINE	SS = SOLID SURFACE
P = PLASTIC	W = WOOD

CONTINUED

DIA.	MODEL NO.	MODEL NO.	#T	ARBOR	GRIND	RAKE	KERF	RPM	MACHINE	MAT	PG
12"	PRS-30580	PRS	80	1"	TCG	-5	.110	5000	Various	SS	18
12"	PRS-305100	PRS	100	1"	TCG	-5	.110	5000	Various	SS	18
12"	PT-30512	PT	12	1"+Bushings	FTG	-8	.134	5000	Rescue	W	29
12"	PT-30524	PT	24	1"+Bushings	FTG	-8	.134	5000	Rescue	W	29
12"	PT-30524A	PT	24	20mm	FTG	-8	.134	5000	Rescue	W	29
12"	PT-30560	PT	60	1"	ATAF	3	.094	5000	Miter Saws	W	9
12"	PT-30580	PT	80	1"	ATAF	5	.094	5000	Miter Saws	W	9
12"	PT-305100	PT	100	1"	ATAF	5	.094	5000	Miter Saws	W	9
12"	RS-30524CBN	RS	24	1"	ATB	20	.134	5000	Table Saws	W	11
12"	RS-30536CBN	RS	36	1"	ATB	20	.134	5000	Table Saws	W	11
12"	RS-30548CBN	RS	48	1"	ATB	20	.134	5000	Table Saws	W	11
12"	RS-30560	RS	60	1"	ATBR	15	.134	5000	Table Saws	W	11
12"	SL-305100	SL	100	1"	ATAF	5	.091	5000	Miter Saws	W	9
12"	SPS-30578	SPS	78	1"	MTCG	10	.087	1700	Dry Cut saws	ST	24
350mm	IW-350100AB3	IW	100	30mm	ATAFR	10	.136	4300	Various	L	25
350mm	IW-350100ABD3	IW	100	30mm	ATBR	15	.136	4300	Various	W	25
350mm	IW-35032CBD3	IW	32	30mm	ATB	25	.136	4300	Various	W	25
350mm	IW-35060CBD3	IW	60	30mm	ATB	20	.136	4300	Various	W	25
350mm	IW-350100D3	IW	100	30mm	TCG	10	.136	4300	Various	L	25
14"	AC-355100DN	AC	100	1"	TCG	-5	.118	4300	Miter Saws	NF	19
14"	GM-35560	GM	60	1"	ATB	20	.126	4300	Table Saws	W	13
14"	IW-355110AB	IW	110	5/8"	ATBR	-3	.118	4300	Double Miter	W	26
14"	IW-35532CBD2	IW	32	1"	ATB	20	.138	4300	Table Saws	W	26
14"	IW-35540D2	IW	40	1"	TCG	20	.157	4300	Table Saws	W	26
14"	IW-35560AB2	IW	60	1"	ATBR	-3	.118	4300	Miter Saws	W	26
14"	ML-355120AB	ML	120	1"	ATAFR	0	.126	4300	Table Saws	L	15
14"	ML-355100H	ML	100	1"	HATB	-5	.126	4300	Table Saws	L	15
14"	MP-355100AB2	MP	100	5/8"	ATAFR	-3	.126	4300	Double Miter	W	10
14"	PC-355100CB	PC	100	1"	ATAF	5	.118	4300	Table Saws	P	17
14"	PR-35580AB	PR	80	1"	ATAFR	15	.118	4300	Various	W	12
14"	PR-355100AB	PR	100	1"	ATAFR	15	.118	4300	Various	W	12
14"	PRA-355100DN	PRA	100	1"	TCG	-5	.134	4300	Miter Saws	NF	20
14"	PRF-35572D	PRF	72	1"	TCG	0	.094	1700	Dry Cut Saws	F	21
14"	PRF-35572DK	PRF	72	1"	TCG	0	.098	1700	Dry Cut Saws	F	23
14"	PRF-35572DS	PRF	72	1"	TCG	0	.094	1700	Dry Cut Saws	F	22
14"	PRF-35590BWS	PRF	90	1"	MTCG	0	.094	1700	Dry Cut Saws	F	22
14"	PRP-355100CB	PRP	100	1"	ATAF	5	.134	4300	Various	P	17
14"	PRS-355100	PRS	100	1"	TCG	-5	.126	4300	Various	SS	18
14"	PT-35514	PT	14	1"+Bushings	FTG	-8	.142	4300	Rescue	W	29
14"	PT-35524	PT	24	1"+Bushings	FTG	-8	.142	4300	Rescue	W	29
14"	RS-35524CBN	RS	24	1"	ATB	20	.142	4300	Table Saws	W	11
14"	RS-35536CBN	RS	36	1"	ATB	20	.142	4300	Table Saws	W	11
14"	RS-35548CBN	RS	48	1"	ATB	20	.142	4300	Table Saws	W	11
14"	SPS-35590	SPS	90	1"	MTCG	10	.087	1700	Dry Cut Saws	ST	24
15"	AC-380100DN	AC	100	1"	TCG	-5	.118	4020	Miter Saws	NF	19
15"	IW-38060AB2	IW	60	1"	ATBR	-3	.118	4020	Miter Saws	W	26
15"	MP-380100CB	MP	100	1"	ATAF	0	.126	4020	Miter Saws	W	10
15"	MP-380100AB	MP	100	1"	ATAFR	-3	.126	4020	Miter Saws	W	10

Reference by Diameter

CONTINUED

MATERIALS KEY:

FB = FIBER CEMENT BOARD	NF = NON-FERROUS
F = FERROUS METALS	ST = STAINLESS STEEL
L = LAMINATES, MELAMINE	SS = SOLID SURFACE
P = PLASTIC	W = WOOD

DIA.	MODEL NO.	MODEL NO.	#T	ARBOR	GRIND	RAKE	KERF	RPM	MACHINE	MAT	PG
16"	AC-405120DN	AC	120	1"	TCG	-5	.134	3690	Various	NF	19
16"	PR-405100CBN	PR	100	1"	ATB	20	.126	3690	Various	W	12
16"	PRF-40580D	PRF	80	1"	TCG	0	.102	1700	Dry Cut Saws	F	21
16"	PRS-405120	PRS	120	1"	TCG	-5	.134	3690	Various	SS	18
16"	RS-40536CBN	RS	36	1"	ATB	20	.134	3690	Various	W	11
16"	RS-40560CB	RS	60	1"	ATAF	15	.126	3690	Various	W	11
18"	PRS-455120	PRS	120	1"	TCG	-5	.134	3400	Various	SS	18

Diamond Saw Blades

3-3/8"	CF-085D		Diamond Blade				15mm		Continuous Rim		2240
4-1/8"	DA-105T-SL		Diamond Blade				20mm		TURBO		14500
4-1/8"	DA-105T-SL2		Diamond Blade				7/8"		TURBO		14500
4-1/8"	DA-105T-GL		Diamond Blade				20mm		TURBO		14500
4-1/8"	DA-105T-GL2		Diamond Blade				7/8"		TURBO		14500
4-1/8"	DA-105S-SL		Diamond Blade				20mm		SEGMENT		14500
4-1/8"	DA-105S-SL2		Diamond Blade				7/8"		SEGMENT		14500
4-1/8"	DA-105S-GL		Diamond Blade				20mm		SEGMENT		14500
4-1/8"	DA-105S-GL2		Diamond Blade				7/8"		SEGMENT		14500
4-3/8"	DA-110R-SL		Diamond Blade				7/8"		Continuous Rim		13800
4-3/8"	DA-110S-SL		Diamond Blade				7/8"		SEGMENT		13800
5"	DA-125T-SL		Diamond Blade				7/8"		TURBO		12200
5"	DA-125S-SL		Diamond Blade				7/8"		SEGMENT		12200
7-1/8"	DA-180T-GL		Diamond Blade				5/8"KO		TURBO		8400
7-1/4"	DA-185S-SL		Diamond Blade				5/8"KO		SEGMENT		8300
12"	DA-305T-SL		Diamond Blade				1"		TURBO		TBD

TSD Blades

4"	TSD-105C		4" Depressed Cntr.				7/8"		Grinding Cup		14500
7"	TSD-180D		7" Diamond Abrasives				5/8"KO		TSD Blade		8300
12"	TSD-305D		12" Diamond Abrasives				1" + Bushings		TSD Blade		TBD
12"	TSD-305D2		12" Diamond Abrasives				20mm		TSD Blade		TBD
14"	TSD-355D		14" Diamond abrasives				1" + Bushings		TSD Blade		TBD
14"	TSD-355D2		14" Diamond abrasives				20mm		TSD Blade		TBD

BLADES FOR ALL REASONS

WE HAVE BLADES TO FIT MOST ALL OF YOUR NEEDS!

IF YOU ARE A:

Residential Builder ▪ Commercial Builder
Cabinet Maker ▪ Furniture Maker
Finish Carpenter ▪ Electrician ▪ Remodeler
General Contractor ▪ Kitchen Installer
Boat Builder ▪ Pallet Maker ▪ Drywall Installer
Carpet Installer ▪ Mason ▪ Metalworker
Frame Maker ▪ Sign Maker ▪ Woodworker
Plumber ▪ Roofing Contractor ▪ Fence Builder
Bridge Builder ▪ Tile Installer

IF YOU USE A:

Miter Saw ▪ Panel Saw ▪ Jamb Saw
Chop Saw ▪ Radial Arm Saw ▪ Band Saw
Grinder ▪ Trim Saw ▪ Beam Saw
Double Miter Saw ▪ Table Saw
Cordless Saw ▪ Biscuit Joiner ▪ Cut-Off Saw
Wet Saw ▪ Gang Saw ▪ Circular Saw

IF YOU WANT TO CUT:

Dimension Lumber ▪ Hardwoods
Veneers ▪ Plastics ▪ Plywoods ▪ Steel Pipe
Laminates ▪ Cement Board ▪ PCB
Concrete ▪ PVC ▪ Channel ▪ Corian
Copper ▪ Angle Iron ▪ Steel Stud ▪ Tile
Softwoods ▪ MDF ▪ Roofing ▪ Formica
Aluminum ▪ Siding ▪ Moulding
Steel Sheet, OSB

Power Tool Series — 3-3/8" to 12"

Pro Series for Wood — 10" to 16"

Pro Series for Non-ferrous — 7-1/4" to 14"

Pro Series for Solid Surface — 7-1/4" to 18"

Alumi-Cut for Non-ferrous — 7-1/4" to 16"

Pro Series for Plastic — 10" to 14"

Plastic Cutter for Plastics — 7-1/4" to 14"

Rapid-Cut Series — 10" to 16"

Mel-Pro Series for Laminates — 8-1/4" to 14"

Panel-Pro Series — 203mm to 300mm

Miter-Pro — 10" to 15"

Diamond-Pro Series — 4" to 12"

Steel-Pro and Steel-Pro Select — 7-1/4" to 16"

Steel-Pro for Stainless — 12" to 14"

Thin Kerf Blades — 5-3/8" to 10"

Brush Cutting Blades — 9" and 10"

Double Miter Blades — 12"

Gold Medal—10"

Cord Free — 3-3/8" to 6-3/4"

Board-Pro — 4-3/8" to 12"

Industrial Series — 10" to 15"

Industrial Series — 250mm, 300mm, and 350mm