

*Insulation*Materials™

PRODUCT GUIDE & SALES CATALOG



YOUR SOURCE

FOR THERMAL & MOISTURE CONTROL.

InsulationMaterials™

Insulation Materials is a nationwide supplier of thermal and moisture control products. We work with a network of today's best manufacturers to provide our customers with the most effective and innovative products available.



We realize that each project is unique and possesses its own set of challenges, which is why we work with you throughout the entire process. From design and selection through purchasing, delivery and support, we stand by to help.



Insulation Materials is proud to be a customer focused company, and we pride ourselves on your satisfaction. We look forward to working with you on your next project!



-Insulation Materials Staff



866-977-2711
www.InsulationMaterials.com

PRICING

Standard pricing is available on our website: www.insulationmaterials.com

We also offer discounts, volume breaks and bundle pricing to contractor customers, distributors and preferred accounts.

For a prompt, detailed quote, or to set up a preferred account, please contact us at [866-977-2711](tel:866-977-2711).

ORDERING

We offer several convenient ways to order:

Phone: [866-977-2711](tel:866-977-2711)

Fax: [309-427-3201](tel:309-427-3201)

Email: orders@insulationmaterials.com

Online: www.insulationmaterials.com

Lead times may vary. Stock items typically ship the same business day when placed before 12:00 pm CST.

Accepting:



Alternative payment methods include: terms, COD, & wire transfer.

QUESTIONS?

Have product questions or a unique application? We can help.

Office Hours: M-F 8:00am-5:00pm CST
Please contact us at [866-977-2711](tel:866-977-2711).

Weekends, Holidays & After Hours:
Email info@insulationmaterials.com.

CONTENTS

INSULATION	3
SPRAY FOAM	17
ACCESSORIES	23
VAPOR BARRIERS	35
RADIANT BARRIERS	41
WEATHER BARRIERS	45
CONCRETE PRODUCTS	49
TOOLS & SAFETY	55
PRODUCT INDEX	59

MATERIAL SELECTION

Given the range of building systems and the number of available products, selecting the right material for a project can often be an overwhelming task. Material composition, water vapor transmission, r-values, fire ratings and recycled content are among the factors to be considered. At Insulation Materials, you can count on sound expertise to interpret technical data and weigh it against building science, product features and overall cost.

TECH DATA, LITERATURE & SAMPLES

Product literature, Technical Data Sheets (TDS) and Material Safety Data Sheets (MSDS) are readily available on our website. Product samples are also available for most products upon request. Please contact us at 866-977-2711 for more information.

PRODUCT AVAILABILITY

Insulation Materials offers a wide variety of products, accessories and tools that help our customers create and improve energy efficient homes and buildings. If you have trouble finding something, please let us know. Even if it is not listed in our catalog or on our website, we can likely obtain it through our extensive network of manufacturers and suppliers.

CUSTOMER SATISFACTION

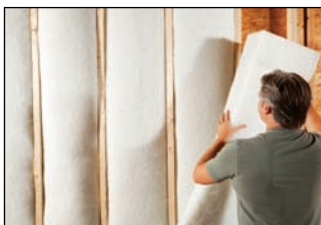
Customer satisfaction is our top priority, and we greatly value your feedback. We offer a variety of ways for you to tell us about your customer experience, including a testimonial program, social media pages and a dedicated email address for your comments and concerns.

For more information, please call 866-977-2711 or email us at:
feedback@insulationmaterials.com.

*Insulation*Materials™

YOUR SOURCE
FOR THERMAL & MOISTURE CONTROL.

INSULATION



Energy Care®

PREMIUM CELLULOSE INSULATION

Energy Care insulation is made from recycled newspaper and contains a fungicide registered by the Environmental Protection Agency (EPA). Energy Care will resist the growth of mold even when exposed to conditions favorable to fungus growth.

Energy Care eliminates the voids and air pockets that can lead to reduced thermal resistance. Density, which is important in reducing air infiltration and increasing effective R-Value, is maintained over time with Energy Care. As a result, Energy Care insulation provides consistent performance and prevents energy loss in both warm and cool weather.



- Uses all borate formulation
- Contains no ammonium sulfate
- Resists mold & mildew
- Made from recycled newspaper

SKU	SIZE
N-ECARE23	23 lb Bag



COVERAGE GUIDE	R-VALUE	INSTALLED THICKNESS	SETTLED THICKNESS	SQUARE FEET/BAG
ATTIC	60	18.4"	15.8"	10.9
	38	11.7"	10.0"	17.3
	30	9.2"	7.9"	21.0
SIDEWALL	20 (2x6)	5.5"		16.8
	13 (2x4)	3.5"		26.4

EcoCell®

CELLULOSE BATT & BLANKETS

EcoCell batts and blankets are ideal for insulating unfinished areas of a home or building such as basements and crawl spaces. EcoCell can be adhered to the wall using spray foam or general construction adhesive.

EcoCell batts and blankets are made from a combination of recycled and renewable fibers, the majority of which is post-consumer recycled newspaper. They can be easily friction fit into cavities and voids. EcoCell cuts easily with a circular saw and masonry blade.



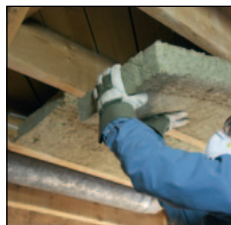
SKU	DIMENSIONS	R-VALUE
ECR6-4X8	1.5" x 4' x 8'	6
ECR6-4X9	1.5" x 4' x 9'	6
ECR10-4X8	2.5" x 4' x 8'	10
ECR10-4X9	2.5" x 4' x 9'	10
ECR-13	3.5" x 16" x 96" (6 Batts Per Bag)	13

Roxul®

MINERAL WOOL INSULATION

Roxul stone wool insulation products are designed for use in both residential and commercial applications. Stone wool (mineral wool) has very unique characteristics that make it an excellent choice for projects where fire, moisture and/or sound resistance are primary concerns.

- Non-combustible
- Excellent sound absorption
- Low moisture absorption
- Water resistant
- CFC & HCFC free
- Contains recycled material
- Earns LEED® points



SKU	DESCRIPTION	BATT DIMENSIONS	R-VALUE	SF/BAG
RXL-CB15	Comfort Batt Thermal Insulation	3.5" x 15.25" x 47"	15	59.7
RXL-CB23	Comfort Batt Thermal Insulation	5.5" x 15.25" x 47"	23	39.8
RXL-CB30	Comfort Batt Thermal Insulation	7.25" x 15.25" x 47"	30	29.9
RXL-CB30-24	Comfort Batt Thermal Insulation	7.25" x 23.25" x 47"	30	30.7
RXL-SS	Sound & Fire Insulation	3" x 15.25" x 47"	-	59.7
RXL-SS-24	Sound & Fire Insulation	3" x 23" x 47"	-	60.1
RXL-AFB	Commercial Sound & Fire Proofing	4" x 16.25" x 48"	-	54.0
RXL-DB	R-10 Foundation Drainage Board	2.38" x 4' x 6"	10	-

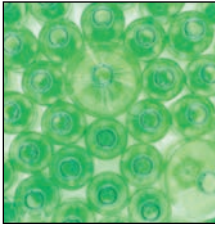
EnGuard®

GLASS FREE INSULATION

EnGuard insulation products offer an efficient and worry free solution for insulating the spaces in your life. EnGuard is manufactured from recycled plastic bottles and high performance fibers. These are the same fibers found in baby diapers, apparel, bed linens, and upholstery, so EnGuard is safe to touch and safe to install.



- Fiber-glass free
- Itch free
- Naturally hydrophobic
- Sound absorbent
- Requires no safety gear
- Made from recycled bottles



SKU	DIMENSIONS	BATTS PER BAG	R-VALUE	SF/BAG
E-R13	3.5" x 15" x 94"	7	13	68.54
E-R19	5.5" x 15" x 94"	5	19	48.84
E-R21	5.5" x 15" x 94"	5	21	48.84



Fiberglass Insulation

Fiberglass insulation is a common way to cost effectively enhance the thermal resistance of a wall, ceiling or floor system. Due to the wide use of the material, a variety of sizes and configurations are readily available.

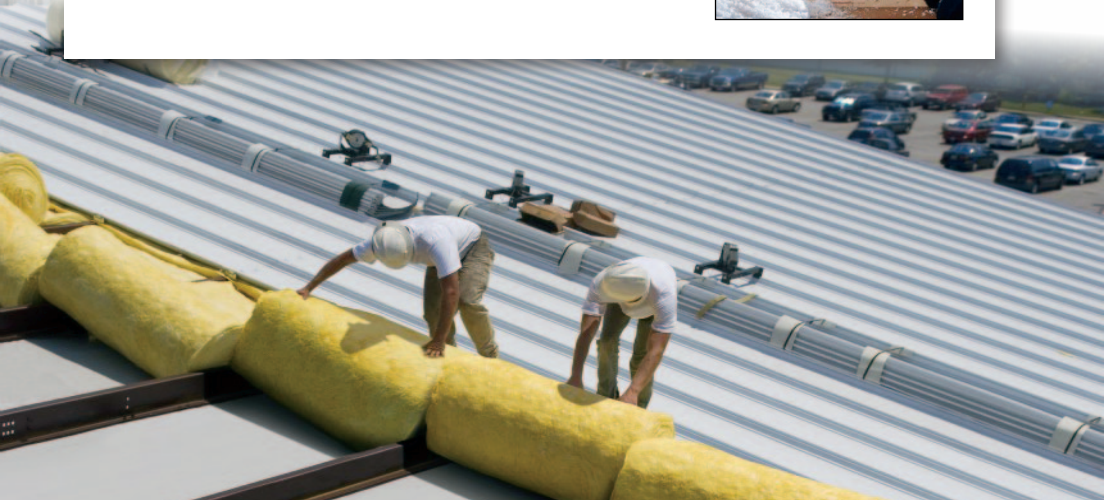
- Residential & commercial batts
- Loose fill and blown-in
- Metal building insulation
- Custom batts



SKU	FACING	WIDTHS AVAILABLE	R-VALUE
FG-U13	Unfaced	16" OC, 24" OC	13
FG-K13	Kraft faced	16" OC, 24" OC	13
FG-U19	Unfaced	16" OC, 24" OC	19
FG-K19	Kraft faced	16" OC, 24" OC	19
FG-U30	Unfaced	16" OC, 24" OC	30
FG-UMB19	Unfaced	4' OC, 6' OC	19
FG-VMB19	Vinyl faced	4' OC, 6' OC	19
FG-BLOWN	Loose fill bags		



*Custom sizes, thicknesses and configurations available.
Call 866-977-2711 for a custom quote.



Anco Textrafine™

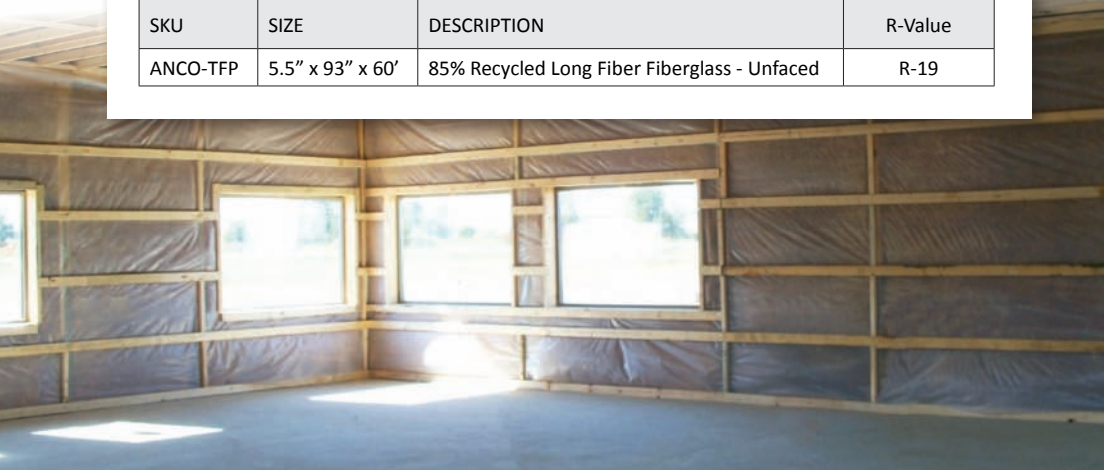
POST FRAME FIBERGLASS INSULATION

Textrafine post frame insulation is produced with a unique manufacturing process that results in strong, resilient insulation that will return to full thickness following compression.

- Designed for post frame buildings
- Will not corrode metal
- Excellent recovery after compression
- Longer fibers means less itch and irritation
- Contains 85% recycled material
- Earns LEED® points



SKU	SIZE	DESCRIPTION	R-Value
ANCO-TFP	5.5" x 93" x 60'	85% Recycled Long Fiber Fiberglass - Unfaced	R-19



Insul-Tarp®

UNDER-SLAB INSULATION

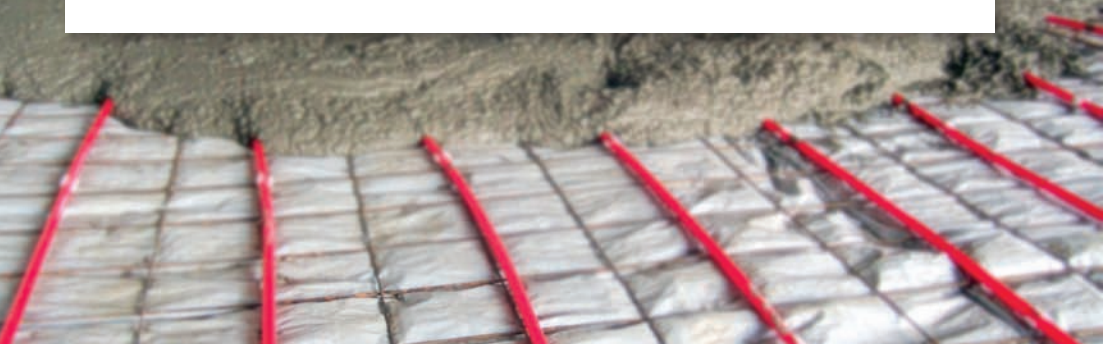
Insul-Tarp is a revolutionary product like no other on the market today. Its lightweight design integrates closed cell foam and reflective technology with a protective poly coating all within three, thin layers. The durable poly coating protects the insulating material from potentially damaging surfaces and is impermeable to moisture. The physical characteristics and overall design of Insul-Tarp make it a very effective product for insulating under concrete slabs in residential, commercial and agricultural radiant heating systems.



- Forms continuous insulation layer under slab
- Conforms to subsoil
- Installs quickly
- Will not crack or break
- Insulation and vapor barrier in one
- Material R-Value of 5.9 (uncompressed)
- 3/4" nominal thickness (1/2" compressed)



SKU	ROLL SIZE
DRFB350	3' x 50'
DRFB450	4' x 50'
DRFB625	6' x 25'
DRFB650	6' x 50'
DRFB1225	12' x 25'
DRFB1250	12' x 50'



Insul-Zone[®]

REFLECTIVE INSULATION WITH EPS CORE

Insul-Zone is high performance, flexible insulation manufactured using Expanded Polystyrene (EPS) foam and highly reflective aluminum. Due to the configuration and design, Insul-Zone is extremely versatile and easy to use. Insul-Zone is an ideal product for residential, commercial, agricultural and institutional projects. This multi-layer, rolled product provides thermal insulation, reflectivity and a vapor barrier in one.



SKU	DIMENSIONS	DESCRIPTION
I-ZONE	0.375" x 4' x 75'	White Poly/Expanded Polystyrene/Foil

*Custom sizes and thicknesses available. Call 866-977-2711 for a detailed quote.

Insul-Barrier[®]

REFLECTIVE BLANKET INSULATION

Insul-Barrier is a reflective blanket insulation composed of multiple layers of insulating material. The unique configuration allows the product to effectively control thermal and moisture migration at the same time. Insul-Barrier will not absorb moisture, making it an excellent choice for basements and crawl spaces. It qualifies as a Class A Vapor Barrier and serves as a high performance insulation that will retain its R-value over time.

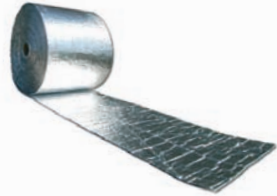
- Perfect for basements & crawl spaces
- Manufactured in rolls for easy installation
- Will not absorb moisture



SKU	ROLL SIZE	DESCRIPTION
IB-4825	4' x 25'	Cross-Woven White Poly/Layered Foam/Foil
IB-4850	4' x 50'	Cross-Woven White Poly/Layered Foam/Foil

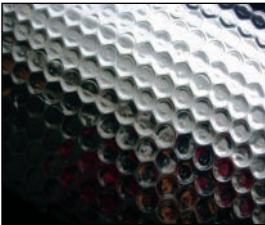
Space Age®

REFLECTIVE BUBBLE INSULATION



Space Age reflective insulation is a lightweight, pliable material that contains no scratchy or harmful fibers. Space Age consists of compact polyethylene air bubbles laminated to reflective foil. Space Age reflects a large percentage of radiant heat energy making it an effective way to enhance thermal resistance in a variety of applications.

- Multiple sizes & configurations available
- Non-fibrous, no Itch, no mess
- Easy to cut and configure
- Will not absorb moisture
- Acts as a vapor barrier
- Reflects radiant heat



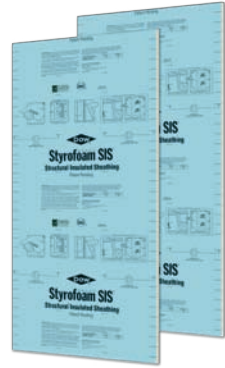
SKU	SIZE	DESCRIPTION
WBF48x125	48" x 125'	White Poly/Bubble/Foil
WBF72x125	72" x 125'	White Poly/Bubble/Foil
WBBF48x125	48" x 125'	White Poly/Bubble/Bubble/Foil
WBBF72x125	72" x 125'	White Poly/Bubble/Bubble/Foil
FBF48x125	48" x 125'	Foil/Bubble/Foil
FBF72x125	72" x 125'	Foil/Bubble/Foil
FBBF16x125	16" x 125'	Foil/Bubble/Bubble/Foil
FBBF24x125	24" x 125'	Foil/Bubble/Bubble/Foil
FBBF48x125	48" x 125'	Foil/Bubble/Bubble/Foil
FBBF72x125	72" x 125'	Foil/Bubble/Bubble/Foil

Dow Styrofoam SIS™

STRUCTURAL INSULATED SHEATHING

Dow Styrofoam SIS is an innovative sheathing product that combines three functions into a single item: structural sheathing, insulation & weather resistive barrier. Simplify exterior wall construction while increasing the energy efficiency of the overall system.

- Approved for structural lateral bracing and transverse loads
- Provides a continuous insulation layer
- Acts as a weather-resistive barrier
- Eliminates need for housewrap & wood structural panels



SKU	DIMENSIONS	R-VALUE	PIECES/PALLET
DSIS-R3-8	0.5" x 4' x 8'	R-3	192
DSIS-R5-8	1" x 4' x 8'	R-5.5	96
DSIS-R3-9	0.5" x 4' x 9'	R-3	192
DSIS-R5-9	1" x 4' x 9'	R-5.5	96
DSIS-R3-10	0.5" x 4' x 10'	R-3	192
DSIS-R5-10	1" x 4' x 10'	R-5.5	96

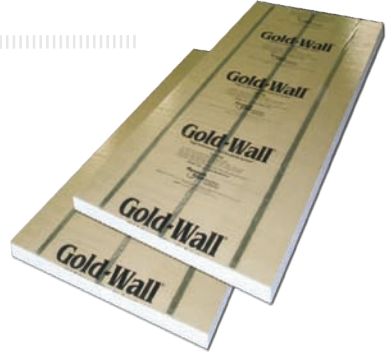


Gold-Wall®

FRAMING & INSULATION SYSTEM

The Gold-Wall insulating system is specifically designed to provide a cost effective, energy efficient alternative to Z-Furring and stud/batt construction when finishing the interior of block or poured masonry walls.

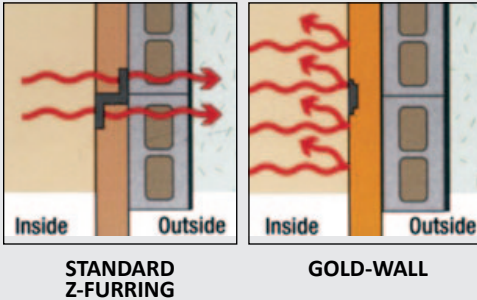
Gold-Wall combines the proven performance of rigid polystyrene insulation with the structural integrity of steel furring strips. Gold-Wall provides an ideal substrate for the installation of drywall or other code approved finishes, and the strength to support shelves and/or furnishings.



Gold-Wall®
"High Performance Wall Insulation System"

- Does not absorb moisture
- Combines framing and insulating into one step
- Provides a continuous insulation layer
- Eliminates thermal bridging
- No fibers or irritants
- Ideal for residential and commercial concrete walls
- Available with 16" or 24" on-center steel studs

GOLD-WALL REDUCES THERMAL BRIDGING



SKU	DIMENSIONS	R-VALUE
GW1-16	1" x 4' x 8'	3.8
GW1-24	1" x 4' x 8'	3.8
GW1.5-16	1.5" x 4' x 8'	5.7
GW1.5-24	1.5" x 4' x 8'	5.7
GW2-16	2.0" x 4' x 8'	7.6
GW2-24	2.0" x 4' x 8'	7.6
GW2.5-16	2.5" x 4' x 8'	9.5
GW2.5-24	2.5" x 4' x 8'	9.5
GW3-16	3" x 4' x 8'	11.4
GW3-24	3" x 4' x 8'	11.4



EPS

EXPANDED POLYSTYRENE BOARD STOCK



EPS offers excellent insulation and moisture properties as well as great value. EPS is widely available and highly customizable to fit a variety of applications.

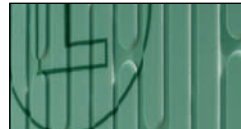
SKU	DIMENSIONS	DESCRIPTION
EPS-1	1" x 4' x 8'	EPS Foam
EPS-1-F	1" x 4' x 8'	EPS Foam/Foil
EPS-1-FF	1" x 4' x 8'	Foil/EPS Foam/Foil
EPS-2	2" x 4' x 8'	EPS Foam
EPS-2-F	2" x 4' x 8'	EPS Foam/Foil
EPS-2-FF	2" x 4' x 8'	Foil/EPS Foam/Foil
EPS-FAN	0.25" x 4' x 50'	EPS Foam - Fanfold

*Additional configurations available. Call 866-977-2711 for a detailed quote.

XPS

EXTRUDED POLYSTYRENE BOARD STOCK

XPS Insulation Board is widely used in commercial and residential construction applications. Features include excellent moisture resistance and high R-value per inch.



SKU	SIZE	DESCRIPTION
GG-CB4	0.25" x 4' x 50'	GreenGuard Condensation Board
GG-DB	0.25" x 4' x 50'	GreenGuard Drainage Board
GG-SE-1	1" x 4' x 8'	GreenGuard Square Edge Board
GG-SE-2	2" x 4' x 8'	GreenGuard Square Edge Board
DSTY-1	1" x 4' x 8'	Dow Styrofoam Square Edge Board
DSTY-2	2" x 4' x 8'	Dow Styrofoam Drainage Board

*Additional configurations available.
Call 866-977-2711 for a detailed quote.

SPRAY FOAM



Gun Foam & Sealants

Handi-Foam Sealants are designed to fill and air-seal small cracks, gaps and voids. Handi-Foam gun sealants are typically applied with a professional dispensing unit resulting in less waste on small jobs and labor savings on larger jobs.

Handi-Foam Sealants cure when ambient moisture/humidity in the air reacts with the foam sealant creating a rigid, closed cell barrier against draft, noise, moisture and air infiltration. They are tack free within 10 minutes and meet ASTM E-84 Class 1 for caulk and sealants.



SKU	DESCRIPTION	SIZE
F-P30115	Handi-Foam Gun Foam	24 oz.
F-P30120	Handi-Foam Extreme Gun Foam - Cold-Weather Formulation	24 oz.
F-P10131	Handi-Seal Window & Door Gun Foam - Low-Expanding	24 oz.
F-P30181	Handi-Foam Fireblock Gun Foam - Approved For Residential Fireblocking	24 oz.
F-P30132	Handi-Stick Polystyrene Construction Gun Foam	24 oz.
F-P30095	Handi-Foam Eco* Gun Foam	20 oz.
F-P30097	Handi-Seal Eco* Gun Foam Window & Door Gun Foam - Low-Expanding	20 oz.

*Eco Foam contains over 10% renewable resources.



HT300 (F61050)



HT500 (F61039)



HT700 (F61030)



P10083



SKU	DESCRIPTION	SIZE
F-F61050	Handi-Tool HT300 Dispensing Unit	7" Barrel
F-F61039	Handi-Tool HT500 Dispensing Unit	7" Barrel
F-F61030	Handi-Tool HT700 Dispensing Unit	7" Barrel
F-P10083	Handi-Cleaner All-Purpose Cleaner	12 oz.



Handi-Foam® Kits

DISPOSABLE SPRAY FOAM KITS

Handi-Foam Quick Cure Two-Component Polyurethane Foam is a multiple purpose, two-component polyurethane froth foam designed within the international guidelines for protection of the user and the environment. The pre-pressurized, portable two component froth systems are dispensed through the state-of-the-art Handi-Gun froth dispensing unit, providing unsurpassed quality and flexibility in end-use performance.



- Self-contained and disposable
- Portable and easy to use
- R-6.1 per inch

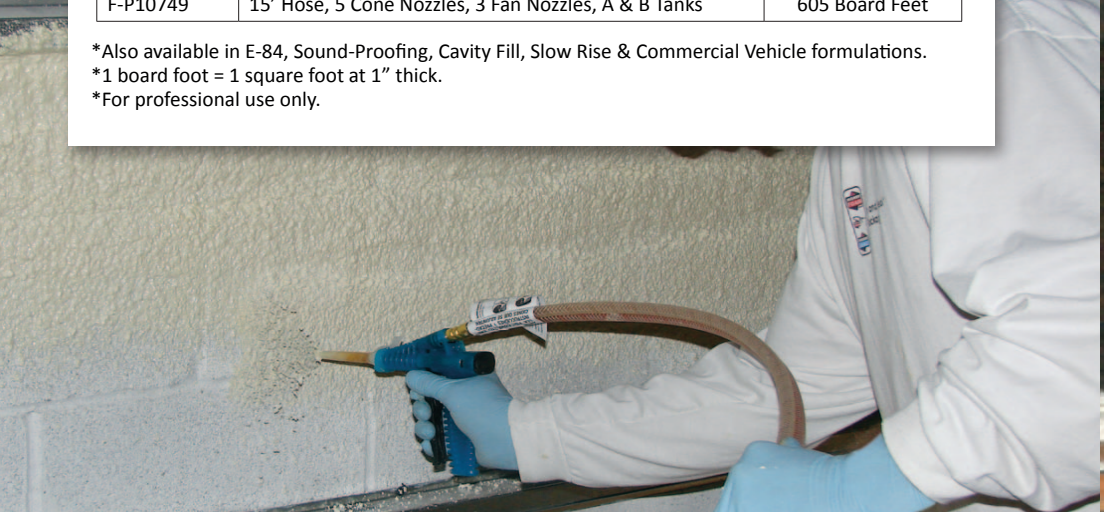


SKU	KIT CONTAINS	COVERAGE
F-P10700	10' Hose, 5 Cone Nozzles, 3 Fan Nozzles, A & B Tanks	105 Board Feet
F-P10720	10' Hose, 5 Cone Nozzles, 3 Fan Nozzles, A & B Tanks	205 Board Feet
F-P10749	15' Hose, 5 Cone Nozzles, 3 Fan Nozzles, A & B Tanks	605 Board Feet

*Also available in E-84, Sound-Proofing, Cavity Fill, Slow Rise & Commercial Vehicle formulations.

*1 board foot = 1 square foot at 1" thick.

*For professional use only.



Magnum[®]

SPRAY FOAM SYSTEM WITH HEATED HOSE

The Magnum has the flexibility to insulate residential construction sites, and the power for use in commercial applications. No pumps or motors are required to operate the Magnum, minimizing equipment expense. The Magnum is fast, portable, and convenient for those remote job sites.

- Refillable A & B tanks
- Heated hose assembly for optimum yield
- Minimal jobsite and work area impact
- Comprehensive training & support



SKU	DESCRIPTION
F-F65256	Starter Kit w/ 50' Hose
F-F65258	Starter Kit w/ 150' Hose

Each starter kit includes the following:

10" Handi-Gun Hose Assembly, Magnum Heated Hose Assembly, Tank-To-Hose Filter w/ Temp Gauge, Hose-To-Gun On/Off Valve Assembly, Nitrogen Regulator, Nitrogen Hoses With Couplings, Tank Pressure Gauge, 50 Pack of Nozzles

SKU	DESCRIPTION	COVERAGE
F-P22100	System 27 Handi-Foam Refill (A & B Tanks)	3,120 Board Feet
F-P22700	System 100 Handi-Foam Refill (A & B Tanks)	11,400 Board Feet

*Also available in E-84, Cavity Fill, Slow Rise & Commercial Vehicle formulations.

*1 board foot = 1 square foot at 1" thick.

*For professional use only.

*Yields are based on theoretical calculations and will vary depending on ambient conditions and particular application.

Magnum Accessories

SKU	DESCRIPTION
F-F65005	Nitrogen Regulator
F-F65070	Tank-To-Hose Cleanable Filter With Temp. Gauge (A-Side)
F-F65080	Tank-To-Hose Cleanable Filter With Temp. Gauge (B-Side)
F-F65090	6' Nitrogen Hose With Coupling (A-Side)
F-F65100	6' Nitrogen Hose With Coupling (B-Side)
F-F65150	Filter SST Screen 60 Mesh
F-F65160	Hose-To-Gun On/Off Valve
F-F65161	Magnum Hose Connector Kit
F-F65180	Regulator With Nitrogen Line Assembly (Quick Disconnect)
F-F65251	Contractor Safety Kit*
F-F65300	Temperature Gauge
F-F65301	Refill Tank Pressure Gauge
F-F66163	Cone Nozzle (50-Pack)
F-F66190	Fan Nozzle (50-Pack)
F-F66220	10" Handi-Gun Hose Assembly
F-F66181	Handi-Gun Trigger Stop Metering Clip (3 Pack)
F-P10083	12 Oz. Handi-Cleaner

*Contractor Safety Kits Contain: Handi-Foam Safety Glasses, Impervious Nitrile Gloves, 3M NIOSH/MSHA Respirator, 3M Organic, Vapor Respirator OV Cartridges, 3M 5 Mil N95 Prefilters, Hygienic Wipes, Tyvek Apron, Tyvek Arm Gauntlets, Handi-Foam Gear Bag, 3M 501 Prefilter Retainer.



F-F65160



F-F65301



F-F66163



F-F66220



INSULATION ACCESSORIES



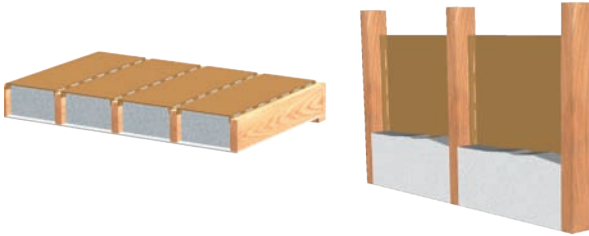
Shoot™

CARDBOARD INSULATION Baffle

The Shoot is a cost effective way to provide backing for blown in and spray foam insulation. Instead of waiting on drywall, an insulator can install the Shoot in a stud or joist cavity and use it to spray insulation against. The Shoot can also be used to create air space between insulation and the bottom side of roof decking.



- Perforated for easy installation
- Multiple uses
- Available for 16" or 24" on-center framing
- Eliminates the need for field crafted baffles



SKU	SIZE	PIECES/BUNDLE	PIECES/PALLET
SHO16	16" x 72"	50	500
SHO24	24" x 72"	50	500

Bafflo®

ATTIC INSULATION Baffle

Soffit vents are designed to increase air movement and ventilation in an attic. However, during periods of strong wind and rain, these vents can wreak havoc on your attic's insulation system. Batt blow-outs and soggy insulation often result from wind and rain that enters through the vents. The Bafflo is designed to eliminate these factors and enhance your system's ability to insulate. It allows the installer to create a tight seal at the top plate that is not affected by air flow through the soffits.



- Prevents insulation from entering soffits
- Promotes ventilation
- Ensures good thermal seal at top plate
- Bundles allow for easy shipping/storage

SKU	SIZE	PIECES/BUNDLE	PIECES/PALLET
BAF16	16" x 72"	50	500
BAF24	24" x 72"	50	500



DuroVent™

ATTIC VENTILATION BAFFLES

Installing DuroVent attic ventilation channels between the rafters of trusses provides an unobstructed air channel through the insulation. Without attic ventilation channels, air cannot flow freely from the soffit to the exhaust vents. Poor airflow reduces insulation performance and accelerates problems due to moisture.

- Staple flange for easy installation
- Allows for proper venting of roof deck
- Fits both 16" and 24" O.C. rafter spacing (splits in two for 16")



SKU	SIZE	DESCRIPTION
DV2200	22" x 48"	Styrofoam Attic Vents

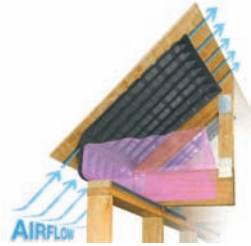
AccuVent®

ATTIC VENTS AND BAFFLES

AccuVent baffles are designed specifically for traditional ceiling applications with either “blown-in” or “batting” type insulation. AccuVents are easy to install with only 6-8 staples and prevent wind washing and drifting of insulation. They are made with 100% recycled flame retardant plastic, and meet the Energy Star Thermal Bypass Checklist requirement.



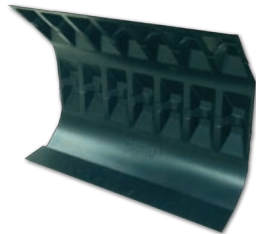
SKU	SIZE	DESCRIPTION
ACBP11754	14.5" x 41"	16" OC Attic Vent
ACBP11739	22.5" x 41"	24" OC Attic Vent
ACBP18429	14.5" x 50"	16" OC Extreme Attic Vent
ACBP18415	22.5" x 50"	24" OC Extreme Attic Vent
ACBP18426	14.5" x 48"	16" OC Cathedral Starter Strip
ACBP18446	22.5" x 48"	24" OC Cathedral Starter Strip
ACBP18425	14.5" x 48"	16" OC Cathedral Ceiling Vent
ACBP18445	22.5" x 48"	24" OC Cathedral Ceiling Vent



AccuBlock®

SPRAY FOAM SOFFIT BAFFLES

AccuBlock baffles are designed for non-ventilated attics where cutting edge spray foam contractors are increasing their speed and efficiency of installation by using them as a “spray template.” This eliminates the time consuming process of creating a “soft-wall” from the top-plate to the roof sheeting.



SKU	SIZE	DESCRIPTION
ACBP18600	14.5" x 24.5"	16" OC AccuBlock
ACBP18601	22.5" x 24.5"	24" OC AccuBlock



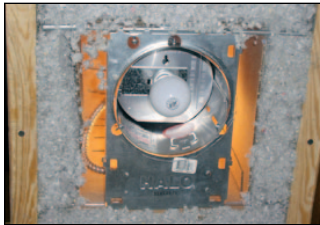
INSULATION ACCESSORIES

Insul-Lite® RECESSED LIGHT COVERS

The Insul-Lite is a fire retardant cover designed to allow the installer to insulate safely and effectively around recessed lights. Research has shown that without proper insulation, areas around recessed lights can allow a large amount of heat energy to enter/escape from a building. However, insulation placed too close to lights can also be a fire hazard. When installed, the Insul-Lite allows insulation to be placed as close to the light or heat producing fixture as possible without the risk of fire.

ILPP-10S

ILPP-10V



SKU	SIZE	DESCRIPTION	STYLE
IL-10S	10" x 10" x 12"	Flame Retardant Corrugated Cardboard	Non-Vented
IL-10V	10" x 10" x 12"	Flame Retardant Corrugated Cardboard	Vented
IL-12S	12.5" x 12.5" x 14"	Flame Retardant Corrugated Cardboard	Non-Vented
IL-12V	12.5" x 12.5" x 14"	Flame Retardant Corrugated Cardboard	Vented
ILPP-10V	10" x 10" x 12"	Pro Plus - High Strength Metal	Vented
ILPP-10S	10" x 10" x 12"	Pro Plus - High Strength Metal	Non-Vented

INSULATION MATERIALS CUSTOMER TESTIMONIAL

"We were re-insulating the attic of a 70's era house. There were 27 can lights rated non-contact to insulation. After calling Platt Electric (our nearest electrical supplier) and a couple electricians, I got only suggestions such as use plastic buckets or replace the can lights; each posing its own set of problems. After some internet searching, I found your Insul-Lite boxes. Perfect! The only issue we had was 6 can lights had too little headroom from the roof so we cut the boxes to act as baffles. In a couple cases, the wiring prevented the boxes from setting completely down, but that's an appearance issue, not function. The 14" boxes were a good fit for 16"oc joists - so much so that we did not have to tape or staple them in place. All in all, this product made an apparently ugly job pretty quick and easy. Thanks, again for your help - and of course, the product!"

- Pete Schuller
ShoreLine Holdings
Pacific City, OR

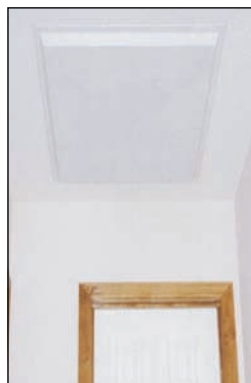


Attic Access Covers

Complete the thermal envelope by insulating and sealing attic and knee wall openings with the Attic LadderMate line of products. The unique design of these covers allows them to be installed in minutes from inside of the living space.



- R-10 insulation value
- Weather-stripped gasket
- Magnetic closure
- Hinged for easy opening
- No finish trim needed



SKU	SIZE	DESCRIPTION	FITS MAX OPENING
ALM-3060	30" x 60" x 2.25"	Attic LadderMate Attic Ladder Insulator	24" x 54"
AM-2935	29" x 35" x 2.25"	AccessMate Attic Access Door	24" x 30"
AM-3538	35" x 38" x 2.25"	AccessMate Attic Access Door	30" x 30"
SM-3538	35" x 38" x 2.25"	ShutterMate Whole House Fan Insulator	30" x 30"

* Complies with Energy Star Home Sealing Program, Energy Star Thermal Bypass Requirements, NAHB Model Green Home Building Guidelines & USGBC-LEED for Homes Program.

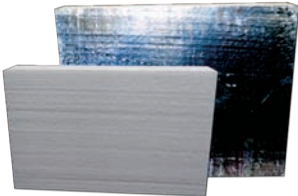


RimBlocks™

BAND JOIST INSULATION BLOCKS

When used in conjunction with spray foam sealant, RimBlocks provide an easy way to effectively air seal rim joists. RimBlocks are precut for 16" on center spaces and provide a thermal resistance factor of R-10. Eliminates the waste and hassle associated with field cutting foam board and other types of insulation.

RB1611F



RB169



SKU	SIZE	COMPOSITION	FITS
RB167	2.6" x 14.25" x 7"	Clear/Foam/Clear	2" x 8" Joist Space
RB167F	2.6" x 14.25" x 7"	Clear/Foam/Foil	2" x 8" Joist Space
RB169	2.6" x 14.25" x 9"	Clear/Foam/Clear	2" x 10" Joist Space
RB169F	2.6" x 14.25" x 9"	Clear/Foam/Foil	2" x 10" Joist Space
RB1611	2.6" x 14.25" x 11"	Clear/Foam/Clear	2" x 12" Joist Space
RB1611F	2.6" x 14.25" x 11"	Clear/Foam/Foil	2" x 12" Joist Space



Tape, Caulk & Adhesive



SKU	SIZE	DESCRIPTION
FT2	2" x 150'	Aluminum Foil Tape
WT4	4" x 180'	White Polyethylene Tape
VDB250	2" x 50'	Viper Double Bond - Double Sided Asphalt Tape
WRTAPE2	2" x 150'	Wraptror - Clear House Wrap Tape
3M233+	1" x 180'	3M Proformance - High Quality Masking Tape
3M5959	1.88" x 136'	3M - Red Outdoor Masking and Stucco Tape
3M2929	1.88" x 150'	3M - Utility Duct Tape





B-36301



B-39901



SKU	SIZE	DESCRIPTION
B-36301	10.1 Oz. Cartridge	50 yr. Acrylic Latex With Silicone - White
B-36300	10.1 Oz. Cartridge	50 yr. Acrylic Latex With Silicone - Clear
B-39901	10.1 Oz. Cartridge	100% Glazing Silicone - White
B-39900	10.1 Oz. Cartridge	100% Glazing Silicone - Clear

*Additional configurations available. Call 866-977-2711 for a detailed quote.



3M-76



3M-77



3M-90



3M-SprayAD



SKU	SIZE	DESCRIPTION
3M-76	24 Oz. Can	3M - High-Tack 76 Spray Adhesive
3M-77	24 Oz. Can	3M - Super 77 Spray Adhesive
3M-90	24 Oz. Can	3M - High Strength 90 Spray Adhesive
3M-SprayAD	24 Oz. Can	3M - Industrial Spray Adhesive



Garage Door Insulating Kit

The Anco Garage Door Insulation Kit is easy to install, made from 100% recycled material, and is GREENGUARD Children & Schools Certified for indoor air quality. With the Anco Garage Door Insulation Kit, it's easy, fast and affordable to make your garage a more comfortable place to work.



SKU	DIMENSIONS	COVERAGE	R-VALUE	KIT CONTAINS
ANCO-GDK	2.5" x 21" x 36.5'	64 Square Feet	9	Insulation & 6 Trim Pieces
ANCO-GDK-TRIM	20.375"			6 Trim Pieces
ANCO-GDK-C	2.5" x 24" x 61'	122 Square Feet	9	Insulation
ANCO-GDK-CTRIM	23.375"			6 Trim Pieces

Water Heater Insulating Kit

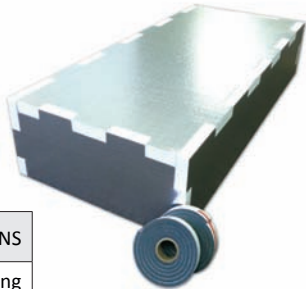
Save on water tank heat losses with this reflective bubble insulation kit.



SKU	DESIGNED FOR	KIT CONTAINS
R-WHK40	40 Gallon Tanks	Insulation, Spacers & Tape
R-WHK60	50-60 Gallon Tanks	Insulation, Spacers & Tape

Attic Stair Cover Kit

Insulate above attic stairs with this easy-to-use insulation kit. Made from durable EPS foam, this kit features reflective foil on both sides for added energy efficiency.



SKU	SIZE	KIT CONTAINS
PF-ATCK	12" x 25" x 56.75"	Stair Cover & Weather Stripping

VAPOR BARRIERS



Viper® SS

STANDARD GRADE POLYETHYLENE VAPOR RETARDERS

Viper SS vapor retarders are designed to be an economical way to control air and moisture migration. When taped at the seams, Viper SS will provide protection against moisture and air flow across the membrane. Typical applications include walls, ceilings, flooring and agriculture.



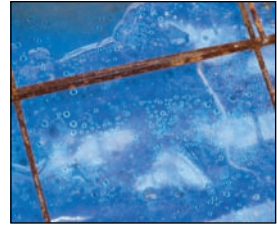
SKU	SIZE	DESCRIPTION
VPSS6	13.5" x 100'	Viper SS 6 Mil - Black
VPSS4C-20100	20' x 100'	Viper SS 4 Mil - Clear
VPSS6C-20100	20' x 100'	Viper SS 6 Mil - Clear
VPSS10C-20100	20' x 100'	Viper SS 10 Mil - Clear

*Additional configurations available. Call 866-977-2711 for a detailed quote.

Viper® VaporCheck® II

HIGH PERFORMANCE UNDER SLAB VAPOR BARRIERS

Viper Vaporcheck II is a multi-layer, extruded, high-density virgin polyolefin under slab vapor barrier. The “virgin resin” used when manufacturing Viper Vaporcheck II prevents material breakdown when exposed to the environment below the slab, thus lasting the lifetime of the building. The high puncture resistance and tensile strength of Viper VaporCheck II greatly reduces punctures and tears when exposed to rigorous job site conditions. Viper VaporCheck II also has a very low water vapor permeance rating which is key to preventing water/vapor migration.



SKU	SIZE	THICKNESS	COLOR	ASTM E 1745 CLASSIFICATION
V210C	14' x 210'	10 Mil	Black	Class C
VPVC210	14' x 210'	10 Mil	Grey	Class A
VPVC215	14' x 140'	15 Mil	Blue	Class A



VAPOR BARRIERS

Viper® CS

CRAWL SPACE VAPOR BARRIERS

Viper CS Vapor Barriers are designed specifically for controlling moisture migration in crawl space applications. They are manufactured with a bright white color to give any crawl space a fresh, clean look. Viper CS Vapor Barriers feature a low perm rating and are engineered with exceptional puncture resistance, tear resistance and tensile strength, providing a long-term solution for controlling crawl space moisture.



SKU	SIZE	MIL THICKNESS	DESCRIPTION
VIPERCS65	12' x 200'	6.5 Mil	Cross-Woven Polyethylene
VIPERCS10	12' x 200'	10 Mil	Cross-Woven Polyethylene
VPVC210CS	14' x 100'	10 Mil	Extruded Polyethylene

- Holds up well under foot traffic
- Ensures an effective seal against pressure driven moisture
- Bonds well to vertical wall with most construction adhesive
- Transforms crawl space into a usable space
- Will not degrade over time
- Superior puncture and tear resistance
- Bright white color
- ASTM E 1745 Class A Vapor Barrier



Vapor Barrier Accessories



WT4



VBDB



VPATCH12AW



VPVCMASTIC

SKU	SIZE	DESCRIPTION
WT4	4" x 180'	4" White Polyethylene Seam Tape
VDB250	2" x 50'	Viper Double Bond - Double Sided Asphalt Tape
VPATCH12AW	11.5" x 50'	Viper VaporPatch - Pipe & Penetration Membrane
VPVCMASTIC28OZ	20 Oz. Tube	Viper VaporCheck Mastic
VPVCMASTIC5G	5 Gallon Pail	Viper VaporCheck Mastic



RADIANT BARRIERS



RADIANT BARRIERS

Radiant Shield®

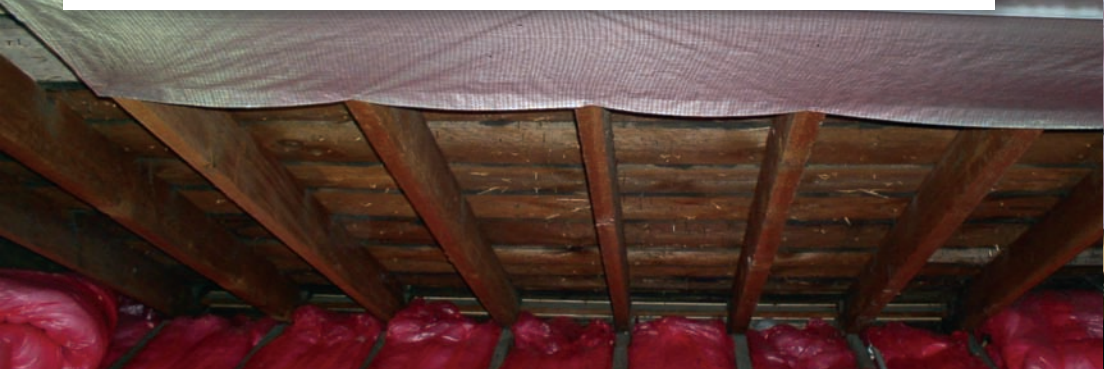
RADIANT BARRIERS

Radiant Shield will decrease the amount of radiant energy that travels across a wall, ceiling or floor system. It utilizes reflective technology to re-direct radiant heat in the opposite direction. Radiant Shield is engineered to be strong, durable and easy to work with.

- High tear resistance
- Flexible
- Non-irritating
- Multiple sizes & configurations



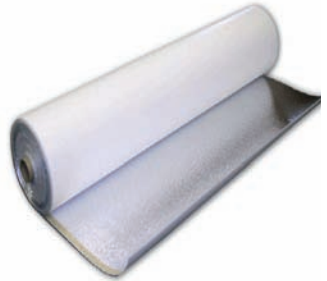
SKU	SIZE	DESCRIPTION
RS18	18" x 125'	Foil/White - Cross-Woven
RS24	24" x 125'	Foil/White - Cross-Woven
RS48	48" x 125'	Foil/White - Cross-Woven
RS48P	48" x 125'	Foil/Foil - Perforated - Cross-Woven
FSK50200-H	50" x 200'	Foil/Kraft - Scrim Reinforced



Radiant Shield® Pro Plus

REFLECTIVE VAPOR BARRIER WITH FOAM CORE

Radiant Shield Pro Plus is composed of white polyethylene, high density closed cell foam & low emissive reflective foil. Specifically designed for the post frame construction industry, Radiant Shield Pro Plus fuses several innovative technologies that make it ideally suited for tough jobsite conditions.



SKU	SIZE	DESCRIPTION
RSPP72125	72" x 125'	Foil/Foam/White Cross-Woven Poly
RSPP74WA	74" x 125'	Foil/Foam/White Poly with Peel & Stick Adhesive Tab

*Custom sizes and configurations available. Call 866-977-2711 for a custom quote.

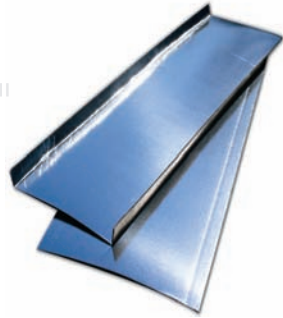


RADIANT BARRIERS

Radiant Panel™

REFLECTIVE CARDBOARD PANELS

The Radiant Panel is a semi-rigid foil backed cardboard panel that can be stapled in between framing members to create a radiant barrier. Works great in conjunction with other types of insulation such as fiberglass and spray foam. Can also be used to create a ventilation channel between roof decking and insulation.



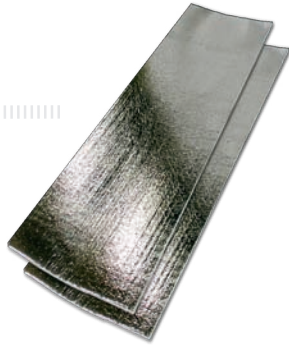
SKU	SIZE	PIECES/BUNDLE	PIECES/PALLET
RP16	16" x 48"	50	500
RP24	24" x 48"	50	500



Radiant Panel™ Pro Plus

REFLECTIVE FOAM INSERTS

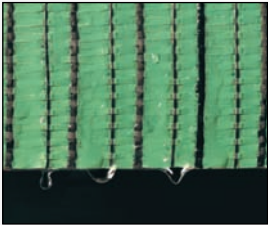
Radiant Panel Pro Plus is a foil backed foam panel that creates a radiant barrier when installed between studs, rafters or floor joists. The panel is self-supporting requiring no staples or fasteners for installation. Radiant Panel Pro Plus is perfect for attics, ceilings, crawl spaces and floor joist radiant heating systems.



SKU	SIZE	PIECES/BUNDLE	PIECES/PALLET
RP3-16	16" x 48"	50	500
RP3-24	24" x 48"	50	500



WEATHER BARRIERS



GreenGuard®

BUILDING WRAPS & ACCESSORIES

When water passes through the exterior cladding, GreenGuard building wraps serve as the second layer of moisture protection, deflecting water away from sheathing and keeping it from further penetrating the wall system. The wraps also serve as a barrier to air infiltration yet breathe to allow inside moisture vapor to escape. When combined with butyl flashing and tape, GreenGuard wraps help reduce the potential for rot, mold, and mildew caused by external water sources.



SKU	SIZE	DESCRIPTION
RD0990	9' x 100'	RainDrop Building Wrap With Drainage Channels
RD1510	10' x 150'	RainDrop Building Wrap With Drainage Channels
GM1490	9' x 150'	Max Wrap
GM1510	10' x 150'	Max Wrap
1585TN	1.875" x 165'	Clear House Wrap Tape
TF04082	4" x 82'	Butyl Window & Door Flashing
TF06082	6" x 100'	Butyl Window & Door Flashing
TS09033	9" x 33'	SuperStretch Butyl Flexible Window & Door Flashing

*Private labeling & logo printing may be available. Call 866-977-2711 for details.



Wraptor®

HOUSE WRAP

Wraptor is a breathable cross-woven polyethylene house wrap that helps prevent wall sheathing from soaking up moisture that gets behind the exterior cladding (vinyl siding, brick, etc.). Wraptor provides the tear resistance of a premium wrap at an economical price.



SKU	SIZE	DESCRIPTION
WR9100	9' x 100'	Cross-Woven & Micro-Perforated
WR10100	10' x 100'	Cross-Woven & Micro-Perforated



Wraptor® Plus

REFLECTIVE HOUSE WRAP

Wraptor Plus is an innovative housewrap that combines the benefits of cross-woven material with reflective technology. This allows the wrap to increase wall system efficiency not only by sealing up cracks in the wall sheathing, but also by reducing radiant heat transfer across the wall system.



Wraptor Plus is also extremely tear resistant and flexible making installation a breeze and improving the long-term integrity of the weather resistive membrane.

SKU	SIZE	DESCRIPTION
WRPLUS9150	9' x 150'	Cross-Woven & Micro-Perforated
WRPLUS10100	10' x 100'	Cross-Woven & Micro-Perforated

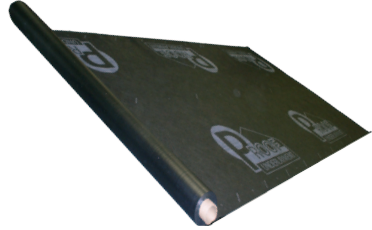


WEATHER BARRIERS

Proof™

SYNTHETIC ROOFING UNDERLAYMENT

Proof is a synthetic roofing underlayment that combines several technologies to create a long-lasting high performance material. It is stronger and lighter than traditional roofing felt and can be used as a temporary roof covering before applying finished roofing.



SKU	SIZE	DESCRIPTION
PRF5200	5' x 200'	Cross-Woven Polyethylene With Slip Resistant Surface



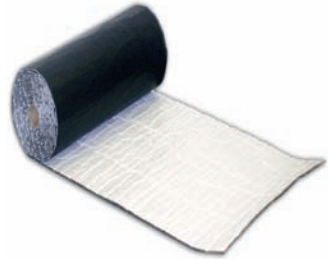
CONCRETE PRODUCTS



Topper™

LIGHTWEIGHT CURING BLANKETS

Topper helps concrete cure properly by protecting it from rain, snow, ice and extreme temperatures. Cross-woven skins laminated to closed cell bubble pack allow for easy rolling and unrolling. This unique configuration prevents the Topper from absorbing air and moisture on the jobsite, promoting re-usability and compact storage. When placed with the white side facing up, the Topper can also be used to reflect sun light, reducing the amount of heat absorbed by the concrete.



SKU	SIZE
TOP1850	18" x 50'
TOP4850	48" x 50'
TOP7225	72" x 25'
TOP7250	72" x 50'



MWC Blankets

CONCRETE BLANKETS

Curing blankets from Midwest Canvas retain the hydration heat of concrete poured in cold weather. They are often necessary to keep concrete warm during winter pours so that it can achieve proper specs. Heavy-duty binding is utilized at the edges of Midwest Blankets and they are manufactured with grommets in 4 corners.



SKU	SIZE	DESCRIPTION
NRB2.2B-625	6' x 25'	2 Layer Bubble Insulating Medium
NRB2.2B-650	6' x 50'	2 Layer Bubble Insulating Medium
MWCB2.8-625	6' x 25'	One Side Reflective - 2 Layer Bubble Insulating Medium
MWCB2.8-650	6' x 50'	One Side Reflective - 2 Layer Bubble Insulating Medium
MWC5.11-625	6' x 25'	One Side Reflective - 4 Layer Bubble & Foam Insulating Medium
MWC5.11-650	6' x 50'	One Side Reflective - 4 Layer Bubble & Foam Insulating Medium
MWCB7.74-625	6' x 25'	Two Sides Reflective - 2 Layer Bubble Insulating Medium
MWCB7.74-650	6' x 50'	Two Sides Reflective - 2 Layer Bubble Insulating Medium

*Additional configurations available. Call 866-977-2711 for a detailed quote.

PowerBlanket®

ELECTRIC CURING/THAWING BLANKETS

Powerblanket’s ground thawing and concrete curing blankets provide contractors with the heat they need to accelerate construction projects all winter long. Utilizing patented GreenHeat Technology, Powerblanket delivers a barrier of insulated warmth that traps heat and moisture during the wet-cure process to produce a higher grade finished product in record time. Increased PSI levels and decreased defects are among the many benefits achieved by this groundbreaking technology.

Engineered for use in both warm and cold climates, Powerblanket protects concrete from rapid drying, freezing, and cracking during the hydration process. Powerblanket’s lightweight portable design make them a favorite for both large and small projects alike.



SKU	SIZE	VOLTAGE	WATTAGE	AMPS	WEIGHT
MD0325	3' x 25'	120V	720	6.00	39 lbs
MD1010	10' x 10'	120V	1440	12.00	65 lbs
MD625	6' x 25'	120V	1440	12.00	78 lbs
MD1123	11' x 23'	120V	2400	20.00	134 lbs

Insul-Tarp® Form Cover

ICF CURING BLANKETS

Insul-Tarp Form Cover is a concrete curing blanket designed for both hot and cold weather curing. It protects the concrete from unwanted debris and the harmful effects of the weather such as wind, rain, sleet and snow. Although the Insul-Tarp Form Cover is designed for form work, it is not limited to such applications. Other applications include pier boxes, curbs, footings and gutters.



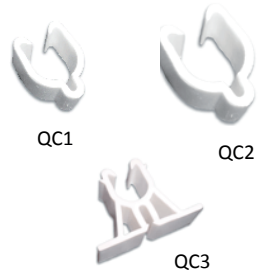
SKU	SIZE	DESCRIPTION
DRFB1850	18" x 50'	18" Insul-Tarp Form Cover
DRFB2450	24" x 50'	24" Insul-Tarp Form Cover
F-CLIP		Insul-Tarp Form Cover Clip



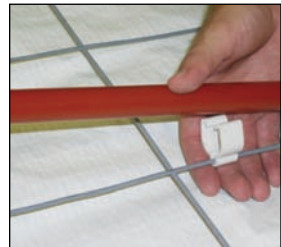
Quip™

PEX TUBING CLIPS

The Quip is a time-saving solution for installing PEX tubing in a radiant floor heating system. The solid PVC construction provides strength, durability and compatibility with the tubing and replaces the need for zip ties, wire ties or staples.



SKU	PIECES/BAG	PIECES/BOX	FITS
QC1-250	250	5000	3/8" & 1/2" Tubing
QC2-250	250	3000	5/8" & 3/4" Tubing
QC3-250	250	1500	3/8" & 1/2" Tubing



Insul-Joint™

EXPANSION JOINT MATERIAL

Insul-Joint is the perfect solution for all your expansion joint needs. It is flexible, lightweight and can be used for any standard concrete application. Will not crack or break when used on curves or columns, and will not degrade over time like other expansion joint materials.

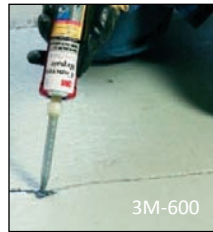


SKU	SIZE	ROLLS/BAG
IJ3550	3.5" x 50'	17
IJ450	4" x 50'	15
IJ650	6" x 50'	10
IJ850	8" x 50'	7



Sealants & Repair

SKU	DESCRIPTION
B-823	One-Part Expansion Joint Sealant - 29 Oz. Tube
3M-600	One-Part Concrete Repair - 29 Oz. Tube
3M-DP5105	Two-Part Expansion Joint Sealant - 12 Oz. Cartridge
3M-DP5106	Two-Part Control Joint Sealant - 12 Oz. Cartridge
3M-4101	Blunt End Mix Tip For 3M 12 Oz. Cartridges
3M-4943	Manual Dispenser For 3M 12 Oz. Cartridges



TOOLS & SAFETY



Tajima™ Tools

Tajima's line of products are designed with the contractor in mind. Durable construction, sleek styling and superior usability set Tajima Tools apart.



T-LC303-D60



T-GK-G210P



T-LC501-A40



T-LC560-D10



T-PUL-265DIS

KNIVES & SAWS	
SKU	DESCRIPTION
T-LC303-D60	LC-303 Slide Lock Knife - 3/8" Blade
T-LC500-C40	LC-500 Auto Lock Knife - 3/4" Blade
T-LC501-A40	LC-501 Dial Lock Knife - 3/4" Blade
T-LC560-D10	GRI Auto Lock Knife - 3/4" Blade
T-LC561-D10	GRI Dial Lock Knife - 3/4" Blade
T-GK-G210P	G-Saw 210 Folding ICF/Plastic Saw - 8.2"
T-PUL-265DIS	Rapid Pull 265 Saw



CAULK GUNS	
SKU	DESCRIPTION
T-CNV-100LT	Convoy Lite - 10.5" Barrel
T-CNV-100PL2	Convoy Plus II - 10.5" Barrel
T-CNV-J900PL2	Convoy Plus II - 13.5" Barrel
T-CNV-100SP	Convoy Super - 10.5" Barrel
T-CNV-J900SP	Convoy Super - 13.5" Barrel



T-CNV-100LT



T-CNV-100PL2



T-CNV-100SP



T-GL-16BW



T-GL-25/7.5MBW



T-CR201R-2



T-IR101S-1

TAPE MEASURES AND SNAP LINES	
SKU	DESCRIPTION
T-GL-16BW	G-Series Shock Resistant 16' Tape Measure
T-HL-25BW	Hi-Lock 25' Tape Measure
T-GL-25/7.5MBW	G-Series Shock Resistant 25' Tape Measure
T-GL-30BW	G-Series Shock Resistant 30' Tape Measure
T-CR201R-2	Chalk Rite II Snap Line
T-CR202B-2	Chalk Rite II Snap Line - Ultra Thin
T-IR101S-1	Ink Rite Auto Rewind Ink Snap Line



Safety Gear



SKU	DESCRIPTION
3M-8210	N95 Particulate Respirator
3M-8000	N95 Respirator w/ Cool Flow Valve
F65251	Contractor Safety Kit*

*Contractor Safety Kits Contain: Handi-Foam Safety Glasses, Impervious Nitrile Gloves, 3M NIOSH/MSHA Respirator, 3M Organic, Vapor Respirator OV Cartridges, 3M 5 Mil N95 Prefilters, Hygienic Wipes, Tyvek Apron, Tyvek Arm Gauntlets, Handi-Foam Gear Bag, 3M 501 Prefilter Retainer.



INDEX

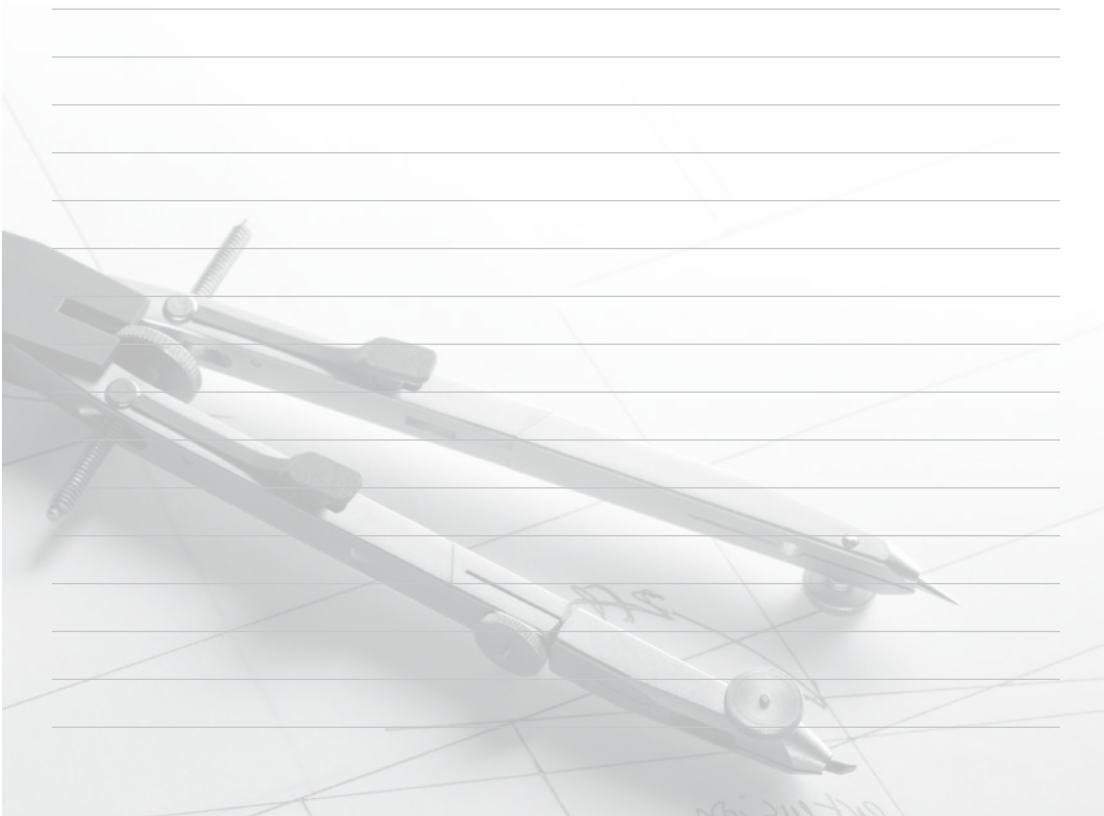
AccuVent	27	Insul-Zone	11
Anco Textra-Fine	9	Magnum Foam System	21
Attic Access Covers	30	MWC Curing Blankets	51
Attic Stair Kit	34	Power Blanket	52
Bafflo	25	Proof	48
Concrete Products	49	Quip	53
EcoCell	5	Radiant Barriers	41
Energy Care	4	Radiant Panel	44
EnGuard	7	Radiant Panel Pro Plus	44
EPS Foam Board	16	Radiant Shield	42
Fiberglass Insulation	8	Radiant Shield Pro Plus	43
Dow Styrofoam SIS	13	Rim Blocks	31
DuroVent	26	Roxul	6
Garage Door Kit	34	Shoot	24
GreenGuard House Wraps	46	Space Age	12
Gold-Wall	14	Spray Foam	17
Gun Foam & Sealants	18	Tape, Caulk & Adhesive	32
Handi-Cleaner	19	Tools & Safety	55
Handi-Foam Kits	20	Topper	50
Handi-Gun	22	Vapor Barriers	35
Handi-Seal	18	Viper CS	38
Handi-Tool	19	Viper SS	36
Insulation	3	Viper VaporCheck II	37
Insulation Accessories	23	Water Heater Kit	34
Insul-Barrier	11	Weather Barriers	45
Insul-Joint	54	Wraptor	47
Insul-Lite	28	Wraptor Plus	47
Insul-Tarp	10	XPS Foam Board	16
Insul-Tarp Form Cover	53		

CAN'T FIND WHAT YOU ARE LOOKING FOR?

Insulation Materials offers a wide variety of products, accessories and tools that help our customers create and improve energy efficient homes and buildings. If you have trouble finding something, please let us know. Even if it is not listed in our catalog or on our website, we can likely obtain it through our extensive network of manufacturers and suppliers.

Call 866-977-2711 for more information.

NOTES



866-977-2711
TOLL FREE CUSTOMER SERVICE



- Browse products
- Check pricing
- Find product information
- Download literature
- Watch videos
- Leave feedback
- View specials
- Place orders

*Insulation*Materials™

YOUR SOURCE
FOR THERMAL & MOISTURE CONTROL.



2711 N. Main Street
East Peoria, IL
www.InsulationMaterials.com
866-977-2711